

On Structure of Cluster Algebras of Geometric Type, II: Green’s Equivalences and Paunched Surfaces

MIN HUANG AND FANG LI*

Abstract: Following our previous work [18], we introduce the notions of partial seed homomorphisms and partial ideal rooted cluster morphisms. Related to the theory of Green’s equivalences, the isomorphism classes of sub-rooted cluster algebras of a rooted cluster algebra are corresponded one-by-one to the regular \mathcal{D} -classes of the semigroup consisting of partial seed endomorphisms of the initial seed. Moreover, for a rooted cluster algebra from a Riemannian surface, they are also corresponded to the isomorphism classes of the so-called paunched surfaces.

Keywords: seed homomorphism, rooted cluster morphism, sub-rooted cluster algebra, Green’s equivalence, paunched surface.

1. Introduction

Cluster algebras are commutative algebras that were introduced by Fomin and Zelevinsky [10] in order to give a combinatorial characterization of total positivity and canonical bases in algebraic groups. The theory of cluster algebras is related to numerous other fields. Since its introduction, the study on cluster algebras mainly involves intersection with Lie theory, representation theory of algebras, its combinatorial method (e.g. the periodicity issue) and categorification, Riemannian surfaces and its topological setting, including the Teichmüller theory.

The algebraic structure and properties of cluster algebras were originally studied in a series of articles [2, 10–12] involving bases and the positivity conjecture.

Received April 7, 2016.

Mathematics Subject Classification(2010): 13F60, 05E15, 20M10.

*Corresponding author

In our previous work [18], we focus to characterize the internal structure of rooted cluster algebras, including all sub-rooted cluster algebras and rooted cluster quotient algebras, via sub-seeds and seed homomorphisms.

In this work, as a subsequent of [18], we introduce the semigroup of partial seed endomorphisms of the initial seed for a rooted cluster algebra and partial ideal rooted cluster endomorphisms and find the connection of the internal structure of a cluster algebra with the semigroup of partial seed endomorphisms of the initial seed via the method of Green's equivalences in semigroup theory. We build the correspondence between the isomorphism classes of sub-rooted cluster algebras and the regular \mathcal{D} -classes of the semigroup of partial seed endomorphisms of the initial seed for a rooted cluster algebra. This result supplies a window for one to understand the internal structure of a rooted cluster algebra through some algebraic properties in semigroup theory.

One of the main results is Theorem 1.3, for which we combine the method of mixing-type sub-seeds (Definition 3.2) and the Green's equivalences in the algebraic theory of semigroups as an original idea.

Another main result, Theorem 1.4, in fact, gives a new algebraic invariant of the internal structure of a Riemannian surface. As preparation, we introduce the so-called paunched surfaces of a Riemannian surface (Definition 6.3) which are shown to correspond to sub-rooted cluster algebras of the rooted cluster algebra from the Riemannian surface, using of the theory from [18], and then using Theorem 1.3, to correspond to regular \mathcal{D} -classes of the semigroup consisting of partial seed homomorphisms (Definition 3.6).

The organization of this article is the following. In Section 2, we recall the definition of cluster algebras of geometric type. In Section 3, some required concepts and results are given from [18][1], and then introduce the semigroups of partial seed homomorphisms of the initial seed for a rooted cluster algebra and partial ideal rooted cluster endomorphisms (Definition 3.20).

In Section 4, we introduce the theory of Green's equivalences in semigroup theory and then give some preliminaries on the semigroup of partial seed homomorphisms.

In Section 5, we give the proofs of the main conclusions, Theorem 1.1, Theorem 1.2 and Theorem 1.3, including three parts, i.e. the characterization of Green's equivalences in $\text{End}_{\text{par}}(\Sigma)$, the continuation of Green's equivalences from $\text{End}_{\text{par}}(\Sigma)$ to $\text{End}_{\text{par}}(\mathcal{A}(\Sigma))$ and characterizing iso-classes of sub-rooted cluster algebras via regular \mathcal{D} -classes.

In Section 6, we firstly characterize sub-rooted cluster algebras of rooted cluster algebras from Riemannian surfaces via paunched surfaces. Then, the proof of the main result, Theorem 1.4, is given.

Here we give the four main conclusions in this paper.

Theorem 1.1. *Let $f : \Sigma_{I_0, I_1} \rightarrow \Sigma$ and $f' : \Sigma_{I'_0, I'_1} \rightarrow \Sigma$ be two regular partial seed homomorphisms in $\text{End}_{\text{par}}(\Sigma)$, then*

- (1) $f\mathcal{R}f'$ if and only if (a) $f(\Sigma_{I_0, I_1}) = f'(\Sigma_{I'_0, I'_1})$.
- (2) $f\mathcal{L}f'$ if and only if (b) $\Sigma_{I_0, I_1} = \Sigma_{I'_0, I'_1}$, and (c) there exists an isomorphism $g : f(\Sigma_{I_0, I_1}) \rightarrow f'(\Sigma_{I'_0, I'_1})$ such that $f' = (\text{id}_{I'_0, I'_1} g) \circ f$, where $f'(\Sigma_{I'_0, I'_1}) = \Sigma_{I''_0, I''_1}$.
- (3) $f\mathcal{H}f'$ if and only if the above statements (a), (b) and (c) hold.
- (4) $f\mathcal{D}f'$ if and only if $f(\Sigma_{I_0, I_1}) \cong f'(\Sigma_{I'_0, I'_1})$.

Theorem 1.2. *Let $f : \mathcal{A}(\Sigma_{I_0, I_1}) \rightarrow \mathcal{A}(\Sigma)$ and $f' : \mathcal{A}(\Sigma_{I'_0, I'_1}) \rightarrow \mathcal{A}(\Sigma)$ be noncontractible ideal partial rooted cluster morphisms in $\text{End}_{\text{par}}(\mathcal{A}(\Sigma))$ with restricted partial seed homomorphisms $f^S, f'^S \in \text{End}_{\text{par}}(\Sigma)$, respectively. Assume that f^S and f'^S are regular. Then, $f^S\mathcal{F}f'^S$ in $\text{End}_{\text{par}}(\Sigma)$ if and only if $f\mathcal{F}f'$ in $\text{End}_{\text{par}}(\mathcal{A}(\Sigma))$ with \mathcal{F} one of the Green's equivalences $\mathcal{R}, \mathcal{L}, \mathcal{H}$, or \mathcal{D} .*

Theorem 1.3. *For a rooted cluster algebra $\mathcal{A}(\Sigma)$, let $\mathcal{A}(\Sigma')$ denote any of its sub-rooted cluster algebra and $[\mathcal{A}(\Sigma')]$ the iso-class of $\mathcal{A}(\Sigma')$ in **Clus**. There exists a one-to-one correspondence between the iso-classes of sub-rooted cluster algebras of $\mathcal{A}(\Sigma)$ and the regular \mathcal{D} -classes in $\text{End}_{\text{par}}(\Sigma)$ through the bijection $\varphi : [\mathcal{A}(\Sigma')] \rightarrow D_{\text{id}_{I_0, I_1}}$ with $\Sigma' \cong \Sigma_{I_0, I_1}$ for some $I_0 \subseteq X$ and $I_1 \subseteq \tilde{X}$.*

Theorem 1.4. *For a Riemannian surface (S, M) with triangulation T without punctures,*

- (a) *there is a one-to-one correspondence between the iso-classes of (I_0, I_1) -punched surfaces of (S, M, T, \mathcal{L}) and the iso-classes of sub-rooted cluster algebras of $\mathcal{A}(\Sigma(S, M, T, \mathcal{L}))$;*
- (b) *there is a one-to-one correspondence between the iso-classes of (I_0, I_1) -punched surfaces of (S, M, T, \mathcal{L}) and the set of regular \mathcal{D} -classes of the semigroup $\text{End}_{\text{par}}(\Sigma(S, M, T, \mathcal{L}))$.*

2. On the definition of cluster algebras of geometric type

The original definition of cluster algebra given in [10] is in terms of exchange pattern. We recall the equivalent definition in terms of seed mutation in [11]; for more details, refer to [10, 11, 14].

Let $(\mathbb{P}, \oplus, \cdot)$ be a **semi-field**, i.e., an abelian multiplicative group, supplied with an **auxiliary addition** \oplus , which is commutative, associative, and distributive with respect to the multiplication in \mathbb{P} . In particular, let \mathbb{P} be a free abelian multiplicative group with a finite set of generators $p_j (j \in J)$, and with an addition \oplus given by

$$(1) \quad \prod_{j \in J} p_j^{a_j} \oplus \prod_{j \in J} p_j^{b_j} = \prod_{j \in J} p_j^{\min\{a_j, b_j\}}$$

for any $a_j, b_j \in \mathbb{Z}$. In this case, the semi-field \mathbb{P} is called as **tropical semi-field**, denoted by $Trop(p_j, j \in J)$, which is related to tropical geometry (refer to [11] and [3]).

For a semi-field \mathbb{P} , it was proved in [10] that the group ring $\mathbb{Z}\mathbb{P}$ is a domain. Let \mathbb{F} (the **ambient field** of cluster algebra) be the fraction field of the polynomial $\mathbb{Z}\mathbb{P}[u_1, \dots, u_n]$ in n independent variables $\{u_1, \dots, u_n\}$ (n is the **rank** of cluster algebra). In particular, when $\mathbb{P} = Trop(p_j, j \in J)$, we have $\mathbb{F} \cong \mathbb{Q}(u_i, p_j) (i = 1, \dots, n, j \in J)$.

An $n \times n$ integer matrix $A = (a_{ij})$ is called **sign-skew-symmetric** if either $a_{ij} = a_{ji} = 0$ or $a_{ij}a_{ji} < 0$ for any $1 \leq i, j \leq n$.

An $n \times n$ integer matrix $A = (a_{ij})$ is called **skew-symmetric** if $a_{ij} = -a_{ji}$ for all $1 \leq i, j \leq n$.

An $n \times n$ integer matrix $A = (a_{ij})$ is called **D -skew-symmetrizable** if $d_i a_{ij} = -d_j a_{ji}$ for all $1 \leq i, j \leq n$, where $D = \text{diag}(d_i)$ is a diagonal matrix with all $d_i \in \mathbb{Z}_{\geq 1}$.

Let \tilde{A} be an $n \times (n + m)$ integer matrix whose principal part, denoted as A , is the $n \times n$ submatrix formed by the first n rows and the first n columns. The entries of \tilde{A} are written by a_{xy} , $x \in X$ and $y \in \tilde{X}$. We say \tilde{A} to be **sign-skew-symmetric** (respectively, **skew-symmetric**, **D -skew-symmetrizable**) whenever A possesses this property.

For two $n \times (n + m)$ integer matrices $A = (a_{ij})$ and $A' = (a'_{ij})$, we say that A' is obtained from A by a **matrix mutation** μ_i in direction $i, 1 \leq i \leq n$, represented as $A' = \mu_i(A)$, if

$$(2) \quad a'_{jk} = \begin{cases} -a_{jk}, & \text{if } j = i \text{ or } k = i; \\ a_{jk} + \frac{|a_{ji}|a_{ik} + a_{ji}|a_{ik}|}{2}, & \text{otherwise.} \end{cases}$$

It is easy to verify that $\mu_i(\mu_i(A)) = A$. The skew-symmetric/symmetrizable property of matrices is invariant under mutations. However, the sign-skew-symmetric property is not so. For this reason, a sign-skew-symmetric matrix A is called **totally sign-skew-symmetric** if any matrix, that is mutation equivalent to A , is sign-skew-symmetric.

A **seed** in \mathbb{F} is a triple $\Sigma = (X, P, B)$, where

- (a) $X = \{x_1, \dots, x_n\}$ is a transcendence basis of \mathbb{F} over the fraction field of \mathbb{ZP} , which is called a **cluster**, whose each $x \in X$ is called a **cluster variable** (see [11]);
- (b) $P = (p_x^\pm)_{x \in X}$ is a $2n$ -tuple of elements of \mathbb{P} satisfying the **normalization condition** $p_x^+ \oplus p_x^- = 1$ for all $x \in X$, which is called the **coefficient tuple** (see [12]);
- (c) $B = (b_{xy})_{x,y \in X}$ is an $n \times n$ integer matrix with rows and columns indexed by X , which is totally sign-skew-symmetric.

Let $\Sigma = (X, P, B)$ be a seed in \mathbb{F} with $x \in X$, the **mutation** μ_x of Σ at x is defined satisfying $\mu_x(\Sigma) = (\mu_x(X), \bar{P}, \mu_x(B))$ such that

- (a) The **adjacent cluster** $\mu_x(X) = \{\mu_x(y) \mid y \in X\}$, where $\mu_x(y)$ is given by the **exchange relation**

$$(3) \quad \mu_x(y) = \begin{cases} \frac{p_x^+ \prod_{t \in X, b_{xt} > 0} t^{b_{xt} + p_x^-} \prod_{t \in X, b_{xt} < 0} t^{-b_{xt}}}{x}, & \text{if } y = x; \\ y, & \text{if } y \neq x. \end{cases}$$

This new variable $\mu_x(x)$ is also called as *new cluster variable*.

- (b) the $2n$ -tuple $\bar{P} = \{\bar{p}_y^\pm\}_{y \in \mu_x(X)}$ is uniquely determined by the normalization conditions $\bar{p}_y^+ \oplus \bar{p}_y^- = 1$ together with

$$(4) \quad \bar{p}_y^+ / \bar{p}_y^- = \begin{cases} p_x^- / p_x^+, & \text{if } y = \mu_x(x); \\ (p_x^+)^{b_{xy}} p_y^+ / p_y^-, & \text{if } b_{xy} \geq 0; \\ (p_x^-)^{b_{xy}} p_y^+ / p_y^-, & \text{if } b_{xy} \leq 0. \end{cases}$$

- (c) $\mu_x(B)$ is obtained from B by applying the matrix mutation in direction x and then relabeling one row and one column by replacing x with $\mu_x(x)$.

It is easy to see that the mutation μ_x is an involution, i.e., $\mu_{\mu_x(x)}(\mu_x(\Sigma)) = \Sigma$.

Two seeds Σ' and Σ'' in \mathbb{F} are called **mutation equivalent** if there exists a series of mutations $\mu_{y_1}, \dots, \mu_{y_s}$ such that $\Sigma'' = \mu_{y_s} \cdots \mu_{y_1}(\Sigma')$.

Trivially, mutation equivalence of seeds gives an equivalent relation on the set of seeds in \mathbb{F} .

Let Σ be a seed in \mathbb{F} . Denote by \mathcal{S} the set of all seeds mutation equivalent to Σ . In particular, $\Sigma \in \mathcal{S}$. For any $\bar{\Sigma} \in \mathcal{S}$, we have $\bar{\Sigma} = (\bar{X}, \bar{P}, \bar{B})$. Denote $\mathcal{P} = \cup_{\bar{\Sigma} \in \mathcal{S}} \bar{P} \subseteq \mathbb{P}$ and $\mathcal{X} = \cup_{\bar{\Sigma} \in \mathcal{S}} \bar{X}$. $\mathbb{Z}[\mathcal{P}]$ represents the sub-ring of $\mathbb{Z}\mathbb{P}$ generated by \mathcal{P} .

Definition 2.1. [10][11] *Let Σ be a seed in \mathbb{F} .*

(i) *The **cluster algebra**, denoted by $\mathcal{A} = \mathcal{A}(\Sigma)$, associated with Σ is defined to be the $\mathbb{Z}[\mathcal{P}]$ -subalgebra of \mathbb{F} generated by \mathcal{X} . Σ is called the **initial seed** of \mathcal{A} .*

(ii) *In particular, if the semi-field \mathbb{P} is tropical, i.e. $\mathbb{P} = \text{Trop}(x_{n+1}, \dots, x_{n+m})$ for some nonnegative integer m , the cluster algebra \mathcal{A} is said to be of **geometric type**.*

In case $\mathbb{P} = \text{Trop}(x_{n+1}, \dots, x_{n+m})$, for any seed $\Sigma = (X, P, B)$ in \mathbb{F} , $P = (p_x^\pm)_{x \in X}$ is a $2n$ -tuple of elements of \mathbb{P} satisfying the normalization condition $p_x^+ \oplus p_x^- = 1$ for all $x \in X$. Since \mathbb{P} is a free abelian group generated by x_{n+1}, \dots, x_{n+m} satisfying the relation (1), we can denote $p_{x_i}^+ = Y^{\mathbf{a}_i}$ and $p_{x_i}^- = Y^{\mathbf{b}_i}$, where $Y^{\mathbf{a}_i} = \prod_{j=1}^m x_{n+j}^{a_{ij}}$ for $\mathbf{a}_i = (a_{i1}, \dots, a_{im})$ and $Y^{\mathbf{b}_i} = \prod_{j=1}^m x_{n+j}^{b_{ij}}$ for $\mathbf{b}_i = (b_{i1}, \dots, b_{im})$ with $a_{ij}, b_{ij} \in \mathbb{Z}_{\geq 0}, j = 1, \dots, m$, by (1) and the normalization condition. It is easy to see that \mathbf{a}_i and \mathbf{b}_i can be determined uniquely by $\mathbf{a}_i - \mathbf{b}_i$. Precisely, if $\mathbf{a}_i - \mathbf{b}_i \stackrel{\Delta}{=} \mathbf{c}_i = (c_{ij})$, then $a_{ij} = \max\{c_{ij}, 0\}$ and $b_{ij} = \max\{-c_{ij}, 0\}$ for $1 \leq j \leq m$.

Following the above discussion, for a given P from the seed $\Sigma = (X, P, B)$, we give uniquely an $n \times m$ integer matrix $B_1 = \begin{pmatrix} \mathbf{c}_1 \\ \dots \\ \mathbf{c}_n \end{pmatrix}$; con-

versely, for a given $n \times m$ integer matrix $B_1 = \begin{pmatrix} \mathbf{c}_1 \\ \dots \\ \mathbf{c}_n \end{pmatrix}$ with $\mathbf{c}_i \in \mathbb{Z}^m$

for any i , we can construct a $2n$ -tuple $P = (p_{x_i}^\pm)_{x_i \in X}$ with $p_{x_i}^+ = Y^{\mathbf{a}_i}$ and $p_{x_i}^- = Y^{\mathbf{b}_i}$, where \mathbf{a}_i and \mathbf{b}_i are decided uniquely by \mathbf{c}_i (see [10]).

Hence, we can replace P by B_1 , and then denote the seed $\Sigma = (X, P, B)$ as $\Sigma = (X, \tilde{B})$ equivalently, where $\tilde{B} = (B \ B_1)$.

For this cluster algebra $\mathcal{A}(\Sigma)$ of geometric type, we can write about its seed and mutation equivalence, briefly described as follows. For more details, refer to [10][14], etc.

Give a field \mathbb{F} as an extension of the rational number field \mathbb{Q} , assume that $x_1, \dots, x_n, x_{n+1}, \dots, x_{n+m} \in \mathbb{F}$ are $n + m$ algebraically independent over \mathbb{Q} for a non-negative integer n and a non-negative integer m such

that $\mathbb{F} = \mathbb{Q}(x_1, \dots, x_n, x_{n+1}, \dots, x_{n+m})$, the field of rational functions in the set $\tilde{X} = \{x_1, \dots, x_n, x_{n+1}, \dots, x_{n+m}\}$ with coefficients in \mathbb{Q} . We call \tilde{X} an **extended cluster**, the subset $X = \{x_1, \dots, x_n\}$ the **cluster** and the subset $X_{fr} = \{x_{n+1}, \dots, x_{n+m}\}$ the **frozen cluster** or, say, the **frozen part** of \tilde{X} in \mathbb{F} , where x_1, \dots, x_n is said to be **(original) exchangeable cluster variables** and x_{n+1}, \dots, x_{n+m} the **stable (cluster) variables** or say **frozen (cluster) variables** and $1, \dots, n$ the **exchangeable vertices** and $n + 1, \dots, n + m$ the **frozen vertices** of \tilde{X} . In particular, when $n = 0$, let $X = \emptyset$ and then $\tilde{X} = X_{fr}$.

The **seed** Σ in \mathbb{F} is a pair $\Sigma = (X, \tilde{B})$, where $\tilde{B} = (B \ B_1)$ is a totally sign-skew-symmetric $n \times (n + m)$ matrix over \mathbb{Z} . With this, we also denote $\mathbb{F} = \mathbb{F}(\Sigma)$. The $n \times n$ matrix B is called the **exchange matrix** and \tilde{B} the **extended exchange matrix** corresponding to the seed Σ .

In the seed $\Sigma = (X, \tilde{B})$, if $X = \emptyset$, that is, $\tilde{X} = X_{fr}$, we call the seed a **trivial seed**.

Given the seed $\Sigma = (X, \tilde{B})$ and $x, y \in \tilde{X}$, we say (x, y) is a **connected pair** in case (i) $x = y$ or; (ii) $x \neq y$ but $b_{xy}^2 + b_{yx}^2 \neq 0$ with $\{x, y\} \cap X \neq \emptyset$. A seed Σ is defined to be **connected** if for any $x, y \in \tilde{X}$, there exists a sequence of variables $(x = z_0, z_1, \dots, z_s = y) \subseteq \tilde{X}$ such that (z_i, z_{i+1}) are connected pairs for all $0 \leq i \leq s - 1$.

Note that in the case of geometric type, the exchange relation in direction $x \in X$ is given as:

$$(5) \quad \mu_x(y) = \begin{cases} \frac{\prod_{t \in \tilde{X}, b_{xt} > 0} t^{b_{xt}} + \prod_{t \in \tilde{X}, b_{xt} < 0} t^{-b_{xt}}}{x}, & \text{if } y = x; \\ y, & \text{if } y \neq x. \end{cases}$$

Given a seed $\Sigma = (X, \tilde{B})$, another seed $\Sigma' = (X', \tilde{B}')$ is said to be **adjacent** to Σ (in direction $x \in X$) if $X' = \mu_x(X)$ and $\tilde{B}' = \mu_x(\tilde{B})$. Moreover, we denote $\Sigma' = \mu_x(\Sigma) = (\mu_x(X), \mu_x(\tilde{B}))$.

In this paper, beginning from Section 3, cluster algebras will always be *cluster algebras of geometric type* defined above.

3. Partial seed homomorphisms and partial ideal rooted cluster morphisms

Seed homomorphisms are originally introduced in [18] for studying the interne structure of (rooted) cluster algebras. Here, we recall those useful definitions and results.

For the initial seed $\Sigma = (X, \widetilde{B})$ of a cluster algebra \mathcal{A} and two pairs (x, y) and (z, w) with $x, z \in X$ and $y, w \in \widetilde{X}$, we say that (x, y) and (z, w) are **adjacent pairs** if $b_{xz} \neq 0$ or $x = z$.

Definition 3.1. ([18]) Let $\Sigma = (X, \widetilde{B})$ and $\Sigma' = (X', \widetilde{B}')$ be two seeds. A map f from \widetilde{X} to \widetilde{X}' is called a **seed homomorphism** from the seed Σ to the seed Σ' if it satisfies that

- (a) $f(X) \subseteq X'$ and;
 - (b) for any adjacent pairs (x, y) and (z, w) with $x, z \in X$ and $y, w \in \widetilde{X}$,
- $$(6) \quad (b'_{f(x)f(y)}b_{xy})(b'_{f(z)f(w)}b_{zw}) \geq 0 \quad \text{and} \quad |b'_{f(x)f(y)}| \geq |b_{xy}|.$$

For seed homomorphisms $f : \Sigma \rightarrow \Sigma'$ and $g : \Sigma' \rightarrow \Sigma''$, define their composition $gf : \Sigma \rightarrow \Sigma''$ satisfying that $gf(x) = g(f(x))$ for all $x \in \widetilde{X}$. Then we can define the **seed category**, denoted as **Seed**, to be the category whose objects are all seeds and whose morphisms are all seed homomorphisms with composition defined as above.

Definition 3.2. Let $\Sigma = (X, \widetilde{B})$ be a seed with \widetilde{B} an $n \times (n + m)$ totally sign-skew-symmetric integer matrix. Assume I_0 is a subset of X , I_1 a subset of \widetilde{X} with $I_0 \cap I_1 = \emptyset$ and $I_1 = I'_1 \cup I''_1$ for $I'_1 = X \cap I_1$ and $I''_1 = X_{fr} \cap I_1$. Denoting $X' = X \setminus (I_0 \cup I'_1)$, $\widetilde{X}' = \widetilde{X} \setminus I_1$ and \widetilde{B}' as a $\sharp X' \times \sharp \widetilde{X}'$ -matrix with $b'_{xy} = b_{xy}$ for any $x \in X'$ and $y \in \widetilde{X}'$, one can define the new seed $\Sigma_{I_0, I_1} = (X', \widetilde{B}')$, which is called a **mixing-type sub-seed** or, say, **(I_0, I_1) -type sub-seed**, of the seed $\Sigma = (X, \widetilde{B})$.

Definition 3.3. Let Σ and Σ' be two seeds and $f : \Sigma \rightarrow \Sigma'$ be a seed homomorphism. f is called a **seed isomorphism** if f induces bijections $X \rightarrow X'$ and $\widetilde{X} \rightarrow \widetilde{X}'$ and $|b_{xy}| = |b'_{f(x)f(y)}|$ for all $x \in X$ and $y \in \widetilde{X}$.

Trivially, we have the following lemmas by the definitions of seed homomorphisms and seed isomorphisms.

Lemma 3.4. A seed homomorphism $f : \Sigma \rightarrow \Sigma'$ is a seed isomorphism if and only if there exists a unique seed homomorphism $f^{-1} : \Sigma' \rightarrow \Sigma$ such that $f^{-1}f = id_\Sigma$ and $ff^{-1} = id_{\Sigma'}$.

Similar as the definition for rooted cluster morphism, we define the image seed of a seed homomorphism.

Definition 3.5. Let $f : \Sigma \rightarrow \Sigma'$ be a seed homomorphism. The **image seed** of Σ under f is defined to be $f(\Sigma) = (f(X), B'')$, where B'' is a $\#(f(X)) \times \#(f(\tilde{X}))$ -matrix with $b''_{xy} = b'_{xy}$ for any $x \in f(X)$ and $y \in f(\tilde{X})$.

Recall that a seed homomorphism $f : \Sigma \rightarrow \Sigma'$ is called **injective** if $f(\Sigma)$ is a mixing-type sub-seed of Σ' , see [18].

Definition 3.6. Define a **partial seed homomorphism** f from Σ to Σ' to be a seed homomorphism f from an (I_0, I_1) -type sub-seed Σ_{I_0, I_1} of Σ to Σ' , which is denoted as $(f, \Sigma_{I_0, I_1}, \Sigma')$ or briefly as f . Denote $\Sigma_f = \Sigma_{I_0, I_1}$ and $\text{Hom}_{\text{par}}(\Sigma, \Sigma')$ be the set of all partial seed homomorphisms from Σ to Σ' .

Denote $\tilde{X}_{\Sigma_f} = \text{Dom}(f) = \tilde{X} \setminus I_1$ as the domain of f and $(\tilde{X}_{\Sigma_f})_{\text{ex}} = \text{Dom}(f)_{\text{ex}} = X \setminus (I_0 \cup I_1)$ as the exchangeable part and $(\tilde{X}_{\Sigma_f})_{\text{fr}} = \text{Dom}(f)_{\text{fr}} = (X_{\text{fr}} \cup I_0) \setminus I_1$ as the frozen part of $\text{Dom}(f)$ such that $\text{Dom}(f) = \text{Dom}(f)_{\text{ex}} \cup \text{Dom}(f)_{\text{fr}}$.

For an (I_0, I_1) -type sub-seed $\Sigma_{I_0, I_1} = (X \setminus I_0, \tilde{B}')$ of a seed $\Sigma = (X, \tilde{B})$, we define a special seed homomorphism $id_{I_0, I_1} : \Sigma_{I_0, I_1} \rightarrow \Sigma$ as follows.

$id_{I_0, I_1}|_{\tilde{X} \setminus I_1}$ is just the natural inclusion from $\tilde{X} \setminus I_1$ to \tilde{X} . Then, Definition 3.1 (a) holds for id_{I_0, I_1} .

We have $b'_{xy} = b_{xy}$ for all $x \in X \setminus I_0$ and $y \in \tilde{X} \setminus I_1$ by the definition of Σ_{I_0, I_1} . Then for any adjacent pairs (x, y) and (z, w) with $x, z \in X \setminus I_0$, $y, w \in \tilde{X} \setminus I_1$, trivially

$$b'_{xy}b_{xy}b'_{zw}b_{zw} \geq 0 \quad \text{and} \quad |b'_{xy}| = |b_{xy}|.$$

But $id_{I_0, I_1}(u) = u$ for $u = x, y, z, w$. Hence, Definition 3.1 (b) holds.

By Definition 3.5, we have $(id_{I_0, I_1})(\Sigma_{I_0, I_1}) = \Sigma_{I_0, I_1}$, which means that id_{I_0, I_1} is an injective seed homomorphism.

Of course, as a partial seed homomorphism, $id_{I_0, I_1} \in \text{End}_{\text{par}}(\Sigma)$.

For two partial seed homomorphisms $(f, \Sigma_{I_0, I_1}, \Sigma') \in \text{Hom}_{\text{par}}(\Sigma, \Sigma')$ and $(g, \Sigma'_{J'_0, J'_1}, \Sigma'') \in \text{Hom}_{\text{par}}(\Sigma', \Sigma'')$, their **composition of partial seed homomorphisms**, denoted as

$$(g, \Sigma'_{J'_0, J'_1}, \Sigma'') \circ (f, \Sigma_{I_0, I_1}, \Sigma') \quad \text{or briefly as} \quad g \circ f,$$

is defined as $(g \circ f)(x) = g(f(x))$ for all $x \in \text{Dom}(g \circ f)$ if it satisfies:

$$\text{Dom}(g \circ f) = \text{Dom}(g \circ f)_{\text{ex}} \cup \text{Dom}(g \circ f)_{\text{fr}},$$

where

$$(7) \quad \text{Dom}(g \circ f)_{\text{ex}} = \{x \in \text{Dom}(f)_{\text{ex}} | f(x) \in \text{Dom}(g)_{\text{ex}}\},$$

and

$$(8) \quad \text{Dom}(g \circ f)_{fr} = \{x \in \text{Dom}(f)_{fr} \mid f(x) \in \text{Dom}(g)_{fr}\}.$$

We claim that $g \circ f$ is a partial seed homomorphism from Σ to Σ'' , that is, the set of partial seed homomorphisms is closed under this composition.

In fact, for $g \circ f$, the condition (a) of Definition 3.1 is clear. For (b), (x, y) and (z, w) are adjacent pairs in Σ with $x, z \in X \cap \text{Dom}(g \circ f)$ and $y, w \in \text{Dom}(g \circ f)$. Since f is partial seed homomorphism, therefore, we have $f(x), f(z) \in X'$ and

$$(9) \quad (b'_{f(x)f(y)}b_{xy})(b'_{f(z)f(w)}b_{zw}) \geq 0 \quad \text{and} \quad |b'_{f(x)f(y)}| \geq |b_{xy}|.$$

Thus, $(f(x), f(y))$ and $(f(z), f(w))$ are adjacent pairs in Σ' with $f(x), f(z) \in X' \cap \text{Dom}(g)$ and $f(y), f(w) \in \text{Dom}(g)$. As g is a partial seed homomorphism, we have

$$(10) \quad (b''_{g \circ f(x)g \circ f(y)}b'_{f(x)f(y)})(b''_{g \circ f(z)g \circ f(w)}b'_{f(z)f(w)}) \geq 0 \quad \text{and} \quad |b''_{g \circ f(x)g \circ f(y)}| \geq |b'_{f(x)f(y)}|.$$

By (9) and (10), we have

$$(11) \quad (b''_{g \circ f(x)g \circ f(y)}b_{xy})(b''_{g \circ f(z)g \circ f(w)}b_{zw}) \geq 0 \quad \text{and} \quad |b''_{g \circ f(x)g \circ f(y)}| \geq |b_{xy}|.$$

Therefore, $g \circ f$ satisfies the condition (b) of Definition 3.1.

Hence, for $\Sigma = \Sigma'$, $\text{End}_{\text{par}}(\Sigma)$ is closed under this composition, which is considered as the multiplication. Below, we will prove that the associative law holds for this multiplication in $\text{End}_{\text{par}}(\Sigma)$.

Remark 3.7. *In Definition 3.6, we allow the mixing-type sub-seed Σ_{I_0, I_1} to be the empty seed \emptyset . In this case, we say f to be the **empty homomorphism** too, denoted as \emptyset . Thus, if $f^{-1}(\widetilde{X}' \setminus I'_1) \subseteq I_1$, then $g \circ f = \emptyset$.*

Fact 3.8. *If $f \in \text{End}_{\text{par}}(\Sigma, \Sigma')$ and $g \in \text{End}_{\text{par}}(\Sigma', \Sigma'')$, then*

(a) $\Sigma_{g \circ f}$ is a mixing-type sub-seed of Σ_f . In general, we can denote $\Sigma_{g \circ f} = (\Sigma_f)_{\emptyset, I_1}$, where

$$I_1 = \{x \in \text{Dom}(f)_{ex} \mid f(x) \notin \text{Dom}(g)_{ex}\} \cup \{x \in \text{Dom}(f)_f \mid f(x) \notin \text{Dom}(g)_f\}$$

and

(b) the image seed $(g \circ f)(\Sigma_{g \circ f})$ is a mixing-type sub-seed of $g(\Sigma_g)$.

Remark 3.9. For any seed homomorphism $f_1 : \Sigma_{I_0, I_1} \rightarrow \Sigma'_{I'_0, I'_1}$, we associate a partial seed homomorphism in $\text{Hom}_{\text{par}}(\Sigma, \Sigma')$, that is, $f = id_{I'_0, I'_1} f_1 : \Sigma_{I_0, I_1} \rightarrow \Sigma'$.

Conversely, for any partial seed homomorphism $f : \Sigma_{I_0, I_1} \rightarrow \Sigma'$, denoted by $f(\Sigma_{I_0, I_1}) = \Sigma'_{I'_0, I'_1}$, we can define a seed homomorphism $f_1 : \Sigma_{I_0, I_1} \rightarrow \Sigma'_{I'_0, I'_1}$ via $f_1(x) = f(x)$ for all $x \in \tilde{X} \setminus I_1$, and thus, $f = id_{I'_0, I'_1} f_1$. It is easy to see that such f_1 is unique for f .

Unfortunately, $f \neq f \circ id_{I_0, I_1}$ since usually $\text{Dom}(f) \neq \text{Dom}(f \circ id_{I_0, I_1})$. It is similar for $id = id_{\emptyset, \emptyset}$, so there does not exist identity in $\text{End}_{\text{par}}(\Sigma)$.

Proposition 3.10. The associative law of the composition of partial seed homomorphisms in $\text{End}_{\text{par}}(\Sigma)$ holds. Then, with the composition as multiplication, $\text{End}_{\text{par}}(\Sigma)$ is a semigroup with zero $\emptyset := (\emptyset, \emptyset, \Sigma)$, including some zero-divisors.

Proof. Let $f, g, h \in \text{End}_{\text{par}}(\Sigma)$ with $\Sigma_f = \Sigma_{I_0, I_1}$, $\Sigma_g = \Sigma_{I'_0, I'_1}$ and $\Sigma_h = \Sigma_{I''_0, I''_1}$, respectively. By the definition of composition, we have that $x \in \text{Dom}((h \circ g) \circ f)_{ex}$ is equivalent to $x \in \text{Dom}(f)_{ex}$, $f(x) \in \text{Dom}(g)_{ex}$ and $g \circ f(x) \in \text{Dom}(h)_{ex}$, which is also equivalent to $x \in \text{Dom}(h \circ (g \circ f))_{ex}$. Hence, $\text{Dom}((h \circ g) \circ f)_{ex} = \text{Dom}(h \circ (g \circ f))_{ex}$. It can be proved similarly that $\text{Dom}((h \circ g) \circ f)_{fr} = \text{Dom}(h \circ (g \circ f))_{fr}$. Therefore, $\text{Dom}((h \circ g) \circ f) = \text{Dom}(h \circ (g \circ f))$ and then $(h \circ g) \circ f = h \circ (g \circ f)$.

Assume that $x \in X$, and let $I = \tilde{X} \setminus \{x\}$. Hence, we have $id_{\{x\}, I} \circ id_{\emptyset, I} = \emptyset$, that is, $id_{\{x\}, I}$ and $id_{\emptyset, I}$ are zero-divisors in $\text{End}_{\text{par}}(\Sigma)$. \square

Denote by $E(\text{End}_{\text{par}}(\Sigma))$ the set of all idempotents in the semigroup $\text{End}_{\text{par}}(\Sigma)$. In particular, $id_{I_0, I_1} = id_{I_0, I_1} \circ id_{I_0, I_1}$, so id_{I_0, I_1} is an idempotent, i.e. $id_{I_0, I_1} \in E(\text{End}_{\text{par}}(\Sigma))$.

However, in $\text{End}_{\text{par}}(\Sigma)$, in general, an idempotent may not be in the form id_{I_0, I_1} . For example, for a quiver $Q : x_1 \longrightarrow x_2 \longleftarrow x_3$, let $f : \Sigma(Q) \rightarrow \Sigma(Q)_{\emptyset, \{x_3\}}$ be the partial seed homomorphism such that $f(x_1) = f(x_3) = x_1$ and $f(x_2) = x_2$. It is clear that f is an idempotent, but is not in the form id_{I_0, I_1} .

Now recall some elementary definitions and properties on rooted cluster morphisms, refer to [1].

Definition 3.11. ([1]) A **rooted cluster morphism** f from $\mathcal{A}(\Sigma)$ to $\mathcal{A}(\Sigma')$ is a ring morphism which sends 1 to 1 satisfying:

CM1. $f(\tilde{X}) \subseteq \tilde{X}' \sqcup \mathbb{Z}$;

CM2. $f(X) \subseteq X' \sqcup \mathbb{Z}$;

CM3. For every (f, Σ, Σ') -biadmissible sequence (y_1, y_2, \dots, y_s) and any y in \widetilde{X} , we have

$$f(\mu_{y_s} \cdots \mu_{y_1}(y)) = \mu_{f(y_s)} \cdots \mu_{f(y_1)}(f(y)).$$

In [1], the authors defined a category **Clus** with objects are rooted cluster algebras and morphisms are rooted cluster morphisms.

Definition 3.12. ([18]) Let $f : \mathcal{A}(\Sigma) \rightarrow \mathcal{A}(\Sigma')$ be a rooted cluster morphism and

$$(12) \quad I_1 = \{x \in \widetilde{X} \mid f(x) \in \mathbb{Z}\}.$$

From f , define a new seed $\Sigma^{(f)} = (X^{(f)}, \widetilde{B}^{(f)})$ satisfying that:

- (I). $X^{(f)} = X \setminus I_1 = \{x \in X \mid f(x) \notin \mathbb{Z}\}$;
- (II). $\widetilde{X}^{(f)} = \widetilde{X} \setminus I_1 = \{x \in \widetilde{X} \mid f(x) \notin \mathbb{Z}\}$;
- (III). $\widetilde{B}^{(f)} = (b_{xy}^{(f)})$ is a $\#(X^{(f)}) \times \#(X^{(f)})$ matrix with

$$b_{xy}^{(f)} = \begin{cases} b_{xy}, & \text{if } f(z) \neq 0 \ \forall z \in I_1 \text{ adjacent to } x \text{ or } y; \\ 0, & \text{otherwise.} \end{cases}$$

We call $\Sigma^{(f)} = (X^{(f)}, \widetilde{B}^{(f)})$ the **contraction** of Σ under f .

Definition 3.13. [18] We say a rooted cluster morphism $f : \mathcal{A}(\Sigma) \rightarrow \mathcal{A}(\Sigma')$ is noncontractible if $f(x) \neq 0$ for all $x \in \widetilde{X}$.

Proposition 3.14. ([18], Proposition 3.4) A rooted cluster morphism $f : \mathcal{A}(\Sigma) \rightarrow \mathcal{A}(\Sigma')$ determines uniquely a seed homomorphism $(f^S, \Sigma^{(f)}, \Sigma')$ from $\Sigma^{(f)}$ to Σ' via $f^S(x) = f(x)$ for $x \in \widetilde{X}^{(f)}$.

Lemma 3.15. ([18], Lemma 3.5) Let $f, g : \mathcal{A}(\Sigma) \rightarrow \mathcal{A}(\Sigma')$ be rooted cluster morphisms. If $f(x) = g(x) \neq 0$ for all $x \in \widetilde{X}$ of Σ , then $f = g$.

We have the following connection between rooted cluster isomorphism and seed isomorphism.

Proposition 3.16. ([18], Proposition 3.8) $\mathcal{A}(\Sigma) \cong \mathcal{A}(\Sigma')$ in **Clus** if and only if $\Sigma \cong \Sigma'$ in **Seed**.

Recall that a rooted cluster morphism $f : \mathcal{A}(\Sigma) \rightarrow \mathcal{A}(\Sigma')$ is called **ideal** if $\mathcal{A}(f^S(\Sigma^{(f)})) = f(\mathcal{A}(\Sigma))$. See Definition 2.11, [1].

Lemma 3.17. (1) (Theorem 2.25(2), [6]) Let $f : \mathcal{A}(\Sigma) \rightarrow \mathcal{A}(\Sigma')$ be an ideal rooted cluster morphism. Then $f = \tau f_1$ with a surjective rooted cluster morphism f_1 and an injective rooted cluster morphism τ , that is,

$$f : \mathcal{A}(\Sigma) \xrightarrow{f_1} \mathcal{A}(f^S(\Sigma(f))) \xrightarrow{\tau} \mathcal{A}(\Sigma').$$

(2) f_1 is an ideal rooted cluster morphism.

Proof. (2) Note that $f_1^S(\Sigma(f_1)) = f^S(\Sigma(f))$ and f_1 is surjective, thus we have

$$\mathcal{A}(f_1^S(\Sigma(f_1))) = \mathcal{A}(f^S(\Sigma(f))) = f_1(\mathcal{A}(\Sigma)).$$

Therefore, f_1 is an ideal rooted cluster morphism. □

We can determinate all rooted cluster subalgebras of a given rooted cluster algebras by the theorem below.

Theorem 3.18. ([18], Theorem 4.4) $\mathcal{A}(\Sigma')$ is a rooted cluster subalgebra of $\mathcal{A}(\Sigma)$ if and only if there exists a mixing-type sub-seed Σ_{I_0, I_1} of Σ such that $\Sigma' \cong \Sigma_{I_0, I_1}$ satisfies $b_{xy} = 0$ for any $x \in X \setminus (I_0 \cup I_1)$ and $y \in I_1$.

Lemma 3.19. ([18], Lemma 6.18) For $y_1 \neq y_2 \in \tilde{X}$, if $f(y_1) = f(y_2) \in \tilde{X}'$ for a rooted cluster morphism $f : \mathcal{A}(\Sigma) \rightarrow \mathcal{A}(\Sigma')$, then $y_1, y_2 \in X_{fr}$.

Analog to $\text{Hom}_{\text{par}}(\Sigma, \Sigma')$, we now consider the set of some *partial* rooted cluster morphisms, $\text{Hom}_{\text{par}}(\mathcal{A}(\Sigma), \mathcal{A}(\Sigma'))$.

Definition 3.20. (i) Define a **partial ideal rooted cluster morphism** f from $\mathcal{A}(\Sigma)$ to $\mathcal{A}(\Sigma')$ to be an ideal rooted cluster morphism $f : \mathcal{A}(\Sigma_{I_0, I_1}) \rightarrow \mathcal{A}(\Sigma')$ for a mixing-type sub-seed Σ_{I_0, I_1} of Σ , which is denoted as $(f, \Sigma_{I_0, I_1}, \Sigma')$ or briefly as f . Denote $\text{Hom}_{\text{par}}(\mathcal{A}(\Sigma), \mathcal{A}(\Sigma'))$ as the set of all partial ideal rooted cluster morphism from $\mathcal{A}(\Sigma)$ to $\mathcal{A}(\Sigma')$.

(ii) For a seed Σ' , fix a family of ideal rooted cluster morphisms

$$\Lambda = \{h_{I'_0, I'_1}^{I_0, I_1} : \mathcal{A}(\Sigma'_{I_0, I_1}) \rightarrow \mathcal{A}(\Sigma'_{I'_0, I'_1})\}_{I_0, I'_0 \in X', I_1, I'_1 \in \tilde{X}'}$$

such that $h_{J_0, J_1}^{J_0, J_1} = \text{id}_{\mathcal{A}(\Sigma'_{J_0, J_1})}$ for all J_0, J_1 and $h_{I'_0, I'_1}^{J_0, J_1} \tau = h_{I'_0, I'_1}^{I_0, I_1}$ if Σ'_{I_0, I_1} is a mixing-type sub-seed of Σ'_{J_0, J_1} and the natural injective seed homomorphism $\Sigma'_{J_0, J_1} \rightarrow \Sigma'_{I_0, I_1}$ induces an injective rooted cluster morphism τ . For

two partial ideal rooted cluster morphisms

$$(f, \Sigma_{I_0, I_1}, \Sigma') \in \text{Hom}_{\text{par}}(\mathcal{A}(\Sigma), \mathcal{A}(\Sigma')), \quad (g, \Sigma'_{I'_0, I'_1}, \Sigma'') \in \text{Hom}_{\text{par}}(\mathcal{A}(\Sigma'), \mathcal{A}(\Sigma'')),$$

we define the **composition** $g \circ_{\Lambda} f = gh_{I'_0, I'_1}^{J_0, J_1} f'$, where $\Sigma'_{J_0, J_1} = f^S(\Sigma_{I_0, I_1})$ by Proposition 3.14 and f is decomposed into $f : \mathcal{A}(\Sigma) \xrightarrow{f'} \mathcal{A}(\Sigma'_{J_0, J_1}) \xrightarrow{\tau} \mathcal{A}(\Sigma')$ by Lemma 3.17.

Remark 3.21. For any mixing-type sub-seed Σ'_{J_0, J_1} , let $h_{J_0, J_1}^{J_0, J_1} = \text{id}_{\mathcal{A}(\Sigma'_{J_0, J_1})}$. For mixing-type sub-seeds Σ'_{I_0, I_1} and Σ'_{J_0, J_1} , if $\mathcal{A}(\Sigma'_{I_0, I_1})$ is a rooted cluster subalgebra of $\mathcal{A}(\Sigma'_{J_0, J_1})$, then let $h_{J_0, J_1}^{I_0, I_1}$ be the natural inclusion; otherwise, let $h_{J_0, J_1}^{I_0, I_1}$ be the trivial ideal rooted cluster morphism satisfying $h_{J_0, J_1}^{I_0, I_1}(x) = 1$ for any $x \in \mathcal{A}(\Sigma'_{I_0, I_1})$. It is easy to see that $\Lambda = \{h_{J_0, J_1}^{I_0, I_1}\}$ satisfies the conditions in Definition 3.20 (ii).

In this definition, note that $g \circ_{\Lambda} f$ is ideal since the composition of ideal rooted cluster morphisms is ideal and $g, h_{I'_0, I'_1}^{J_0, J_1}$ are ideal rooted cluster morphisms, f' is also ideal by Lemma 3.17 (2). Hence, $(g \circ_{\Lambda} f, \Sigma_{I_0, I_1}, \Sigma'')$ is a partial ideal rooted cluster morphism in $\text{Hom}_{\text{par}}(\mathcal{A}(\Sigma), \mathcal{A}(\Sigma''))$.

For $j = 1, 2, 3$, let $f_j : \mathcal{A}(\Sigma_{I_0^j, I_1^j}) \rightarrow \mathcal{A}(\Sigma)$ be ideal rooted cluster morphisms. Denote $\Sigma_{I_0^{j'}, I_1^{j'}} = (f_j)^S(\Sigma_{I_0^j, I_1^j})$ and then $f_j(\mathcal{A}(\Sigma_{I_0^j, I_1^j})) = \mathcal{A}(\Sigma_{I_0^{j'}, I_1^{j'}})$. Also denote $\Sigma_{J_0, J_1} = (f_2 \circ_{\Lambda} f_1)^S(\Sigma_{I_0^2, I_1^2})$ and then we have

$$\mathcal{A}(\Sigma_{J_0, J_1}) = (f_2 \circ_{\Lambda} f_1)(\mathcal{A}(\Sigma_{I_0^2, I_1^2})) = (f_2 h_{I_0^2, I_1^2}^{I_0^1, I_1^1})(\mathcal{A}(\Sigma_{I_0^1, I_1^1})).$$

According to Lemma 3.17, f_i is decomposed into $f_j : \mathcal{A}(\Sigma_{I_0^j, I_1^j}) \xrightarrow{f'_j} \mathcal{A}(\Sigma_{I_0^{j'}, I_1^{j'}}) \xrightarrow{\tau_j} \mathcal{A}(\Sigma)$. Hence, we have the following commutative diagram:

$$\begin{array}{ccccc} \mathcal{A}(\Sigma_{I_0^1, I_1^1}) & \xrightarrow{f'_1} & \mathcal{A}(\Sigma_{I_0^1, I_1^1}) & \xrightarrow{\pi} & \mathcal{A}(\Sigma_{J_0, J_1}) \\ \text{id} \downarrow & & h_{I_0^2, I_1^2}^{I_0^1, I_1^1} \downarrow & & \tau \downarrow \\ \mathcal{A}(\Sigma_{I_0^1, I_1^1}) & \xrightarrow{h_{I_0^2, I_1^2}^{I_0^1, I_1^1} f'_1} & \mathcal{A}(\Sigma_{I_0^2, I_1^2}) & \xrightarrow{f'_2} & \mathcal{A}(\Sigma_{I_0^2, I_1^2}), \end{array}$$

where there are an inclusion $\tau : \mathcal{A}(\Sigma_{J_0, J_1}) \rightarrow \mathcal{A}(\Sigma_{I_0^2, I_1^2})$ and a surjective morphism $\pi : \mathcal{A}(\Sigma_{I_0^1, I_1^1}) \rightarrow \mathcal{A}(\Sigma_{J_0, J_1})$ by Lemma 3.17 since $f'_2 h_{I_0^2, I_1^2}^{I_0^1, I_1^1}$ is ideal.

By definition of composition, we have

$$(f_3 \circ_{\Lambda} f_2) \circ_{\Lambda} f_1 = f_3 h_{I_0^3, I_1^3}^{I_0^{2'}, I_1^{2'}} f_2 h_{I_0^2, I_1^2}^{I_0^{1'}, I_1^{1'}} f_1,$$

$$f_3 \circ_{\Lambda} (f_2 \circ_{\Lambda} f_1) = f_3 h_{I_0^3, I_1^3}^{J_0, J_1} \pi f_1.$$

By Definition 3.20, $h_{I_0^3, I_1^3}^{J_0, J_1} = h_{I_0^3, I_1^3}^{I_0^{2'}, I_1^{2'}} \tau$; hence, we have

$$\begin{aligned} f_3 \circ_{\Lambda} (f_2 \circ_{\Lambda} f_1) &= f_3 h_{I_0^3, I_1^3}^{J_0, J_1} \pi f_1 = f_3 h_{I_0^3, I_1^3}^{I_0^{2'}, I_1^{2'}} \tau \pi f_1 = f_3 h_{I_0^3, I_1^3}^{I_0^{2'}, I_1^{2'}} f_2 h_{I_0^2, I_1^2}^{I_0^{1'}, I_1^{1'}} f_1 \\ &= (f_3 \circ_{\Lambda} f_2) \circ_{\Lambda} f_1, \end{aligned}$$

where the second equality is due to Definition 3.20 (ii). This means the associative law holds for the composition \circ_{Λ} .

Analog to Proposition 3.10, we have the similar result on the following.

Proposition 3.22. *The associative law of the composition \circ_{Λ} of partial ideal rooted cluster morphisms in $\text{End}_{\text{par}}(\mathcal{A}(\Sigma))$ holds. Then, with \circ_{Λ} as multiplication, $\text{End}_{\text{par}}(\mathcal{A}(\Sigma))$ is a semigroup with zero the zero-morphism, including some zero-divisors.*

In the sequel, we will use the theory of seed homomorphisms to discuss on the Green’s equivalences of $\text{End}_{\text{par}}(\mathcal{A}(\Sigma))$ with $\text{End}_{\text{par}}(\Sigma)$.

4. Green’s equivalences in semigroup of partial seed homomorphisms

It is well known that the theory of Green’s equivalences plays a significant role in the algebraic theory of semigroups. They are concerned with mutual divisibility of various kinds, and all of them reduce to the universal equivalence in a group. For the use in this part, we need to introduce a fundamental knowledge of the theory of Green’s equivalences and regular semigroups referring to [17].

Given a semigroup S with a multiplication \cdot , there are five equivalent relations, $\mathcal{L}, \mathcal{R}, \mathcal{H}, \mathcal{D}$ and \mathcal{J} , called **Green’s equivalences** on S . More precisely,

\mathcal{L} on S is defined by the rule that for $x, y \in S$, $x\mathcal{L}y$ if $Sx \cup \{x\} = Sy \cup \{y\}$ (left ideals).

\mathcal{R} on S is defined by the rule that for $x, y \in S$, $x\mathcal{R}y$ if $xS \cup \{x\} = yS \cup \{y\}$ (right ideals).

$\mathcal{H} = \mathcal{L} \wedge \mathcal{R}$, the intersection of \mathcal{L} and \mathcal{R} , that is, for $x, y \in S$, $x\mathcal{H}y$ if $x\mathcal{L}y$ and $x\mathcal{R}y$.

$\mathcal{D} = \mathcal{L} \vee \mathcal{R}$, the join of \mathcal{L} and \mathcal{R} . It is known that $\mathcal{D} = \mathcal{L} \circ \mathcal{R} = \mathcal{R} \circ \mathcal{L}$. Then for $x, y \in S$, $x\mathcal{D}y$ if and only if $\exists z \in S$ such that $x\mathcal{L}z$ and $z\mathcal{R}y$ and if and only if $\exists w \in S$ such that $x\mathcal{R}w$ and $w\mathcal{L}y$.

\mathcal{J} on S is defined by the rule that for $x, y \in S$, $x\mathcal{J}y$ if $SxS \cup xS \cup Sx \cup \{x\} = SyS \cup yS \cup Sy \cup \{y\}$ as two-side ideals.

The equivalent classes of $\mathcal{L}, \mathcal{R}, \mathcal{H}, \mathcal{D}$ and \mathcal{J} are called **\mathcal{L} -classes**, **\mathcal{R} -classes**, **\mathcal{H} -classes**, **\mathcal{D} -classes** and **\mathcal{J} -classes**. For $x \in S$, the equivalent class, including x , is written as L_x, R_x, H_x, D_x and J_x respectively.

From the definition, we have the relations among these equivalent classes as that: $\mathcal{H} \subseteq \mathcal{L} \subseteq \mathcal{D}$, $\mathcal{H} \subseteq \mathcal{R} \subseteq \mathcal{D}$ and $\mathcal{D} \subseteq \mathcal{J}$.

The following results are well-known.

Proposition 4.1. ([17]) *If H is a \mathcal{H} -class in a semigroup S , then either $H^2 \cap H = \emptyset$ or $H^2 = H$ and H is a subgroup of S .*

Proposition 4.2. ([17]) *Let x and y be two idempotents in a semigroup S . Then $x\mathcal{D}y$ if and only if there exists an element $a \in S$ and an inverse a' of a such that $aa' = x$ and $a'a = y$.*

An element x of a semigroup S is called **regular** if there exists another element $y \in S$ such that $xyx = x$. The semigroup S is called a **regular semigroup** if all of its elements are regular. We have the following propositions.

Proposition 4.3. ([17]) *If x is a regular element in a semigroup S , then every element of D_x is regular. In this case, the \mathcal{D} -class D_x is called **regular**.*

Proposition 4.4. ([17]) *In a regular \mathcal{D} -class of a semigroup S , each \mathcal{L} -class and each \mathcal{R} -class contain at least one idempotent.*

By Proposition 3.10, $\text{End}_{\text{par}}(\Sigma)$ is a semigroup with zero element \emptyset . We will characterize the classification of mixing-type sub-seeds of a seed under isomorphisms and then give the classification of sub-rooted cluster algebras in a rooted cluster algebra using the method of Green’s equivalences of semigroups as mentioned above.

In general, the semigroup $\text{End}_{\text{par}}(\Sigma)$ is not regular. For example, if Σ is the seed associate with the quiver $Q : x_1 \longrightarrow x_2 \longleftarrow x_3$, then the partial seed homomorphism f on Σ , satisfying $f(x_1 \longrightarrow x_2) = x_2 \longleftarrow x_3$ and $f(x_1) = x_3$ and $f(x_2) = x_2$, is not regular. Indeed, if f is regular, there exists

$g \in \text{End}_{\text{par}}(\Sigma)$ such that $f \circ g \circ f = f$. From this, it follows that $g(x_2) = x_2$ and $g(x_3) = x_1$, and then $|b_{23}| = 2 > 1 = |b_{g(2)g(3)}| = |b_{21}|$, which contradicts the fact that g is a partial seed homomorphism.

By Proposition 4.1, the \mathcal{H} -class $H_{id_{I_0, I_1}}$ is a group with identity id_{I_0, I_1} under the multiplication of $\text{End}_{\text{par}}(\Sigma)$. According to Proposition 4.3, the \mathcal{D} -class $D_{id_{I_0, I_1}}$ is regular since id_{I_0, I_1} is regular.

Denote by $\text{Aut}(\Sigma_{I_0, I_1})$ the group of automorphisms of the mixing-type sub-seed Σ_{I_0, I_1} in **Seed**.

Lemma 4.5. *For $f, g \in \text{End}_{\text{par}}(\Sigma)$, (a) if $f\mathcal{L}g$, then $\Sigma_f = \Sigma_g$; (b) if $f\mathcal{R}g$, then $f(\Sigma_f) = g(\Sigma_g)$.*

Proof. (a) If $f\mathcal{L}g$, then $h \circ f = g$ and $h' \circ g = f$ for some $h, h' \in \text{End}_{\text{par}}(\Sigma)$. By Fact 3.8 (a), Σ_g is a mixing-type sub-seed of Σ_f since $h \circ f = g$. Similarly, Σ_f is a mixing-type sub-seed of Σ_g . Thus, $\Sigma_f = \Sigma_g$.

(b) If $f\mathcal{R}g$, then $f \circ h = g$ and $g \circ h' = f$ for some $h, h' \in \text{End}_{\text{par}}(\Sigma)$. By Fact 3.8 (b), $g(\Sigma_g)$ is a mixing-type sub-seed of $f(\Sigma_f)$ since $f \circ h = g$. Similarly, $f(\Sigma_f)$ is a mixing-type sub-seed of $g(\Sigma_g)$. Thus, $f(\Sigma_f) = g(\Sigma_g)$. \square

Lemma 4.6. In the semigroup $\text{End}_{\text{par}}(\Sigma)$, for $I_0, I'_0 \subseteq X$ and $I_1, I'_1 \subseteq \tilde{X}$, the following statements hold:

- (1) If $\Sigma_{I_0, I_1} \stackrel{\varphi}{\cong} \Sigma_{I'_0, I'_1}$ in **Seed** and $f := id_{I'_0, I'_1}\varphi$ and $f^{-1} := id_{I_0, I_1}\varphi^{-1} \in \text{End}_{\text{par}}(\Sigma)$, then $f\mathcal{L}id_{I_0, I_1}, f^{-1}\mathcal{R}id_{I_0, I_1}$ and $f\mathcal{R}id_{I'_0, I'_1}, f^{-1}\mathcal{L}id_{I'_0, I'_1}$.
- (2) $\Sigma_{I_0, I_1} \cong \Sigma_{I'_0, I'_1}$ in **Seed** if and only if $id_{I_0, I_1}\mathcal{D}id_{I'_0, I'_1}$.
- (3) $H_{id_{I_0, I_1}} \cong \text{Aut}(\Sigma_{I_0, I_1})$.

Proof. (1) As $f \circ id_{I_0, I_1} = f$ and $f^{-1} \circ f = id_{I_0, I_1}$, we have $f\mathcal{L}id_{I_0, I_1}$. Similarly, $f^{-1}\mathcal{R}id_{I_0, I_1}$.

Dually, we can get $f\mathcal{R}id_{I'_0, I'_1}$ and $f^{-1}\mathcal{L}id_{I'_0, I'_1}$.

(2) “Only if”: Assume that $\Sigma_{I_0, I_1} \stackrel{\varphi}{\cong} \Sigma_{I'_0, I'_1}$, by (1), $f\mathcal{L}id_{I_0, I_1}$ and $id_{I'_0, I'_1}\mathcal{R}f$. Then, $id_{I_0, I_1}\mathcal{D}id_{I'_0, I'_1}$.

“If”: If $id_{I_0, I_1}\mathcal{D}id_{I'_0, I'_1}$, by Proposition 4.2, there exist $f, g \in \text{End}_{\text{par}}(\Sigma)$ such that $g \circ f = id_{I_0, I_1}$ and $f \circ g = id_{I'_0, I'_1}$. By Lemma 4.5, $f(\Sigma_{I_0, I_1}) = \Sigma_{I'_0, I'_1}$ and $f_1 : \Sigma_{I_0, I_1} \rightarrow \Sigma_{I'_0, I'_1}$ is an isomorphism, where $f_1(x) = f(x)$ for all $x \in \tilde{X} \setminus I_1$.

(3) We have $H_{id_{I_0, I_1}}$ as a group with identity id_{I_0, I_1} . According to (1), for $I_0 = I'_0$ and $I_1 = I'_1$ and $\varphi \in \text{Aut}(\Sigma_{I_0, I_1})$, we have $id_{I_0, I_1}\varphi\mathcal{H}id_{I_0, I_1}$ and then $id_{I_0, I_1}\varphi \in H_{id_{I_0, I_1}}$. So, $\text{Aut}(\Sigma_{I_0, I_1}) \rightarrow H_{id_{I_0, I_1}} : \varphi \mapsto id_{I_0, I_1}\varphi$ is an injective group homomorphism.

Conversely, assume $f \in H_{id_{I_0, I_1}}$. Then $f\mathcal{L}id_{I_0, I_1}$ and $f\mathcal{R}id_{I_0, I_1}$. It follows that there exists $g, g' \in H_{id_{I_0, I_1}}$ such that $f \circ g = id_{I_0, I_1}$ and $g' \circ f = id_{I_0, I_1}$, and then, by Lemma 4.5 (b), we have $f(\Sigma_{I_0, I_1}) = \Sigma_{I_0, I_1}$. Since $g \in H_{id_{I_0, I_1}}$, then $g\mathcal{L}id_{I_0, I_1}$. By Lemma 4.5 (a), $\Sigma_g = \Sigma_{I_0, I_1}$. Similarly, $\Sigma_{g'} = \Sigma_{I_0, I_1}$. Then, we have $g(\Sigma_{I_0, I_1}) = \Sigma_{I_0, I_1}$ and $g'(\Sigma_{I_0, I_1}) = \Sigma_{I_0, I_1}$.

Owing to $f \circ g = id_{I_0, I_1}$ and $g' \circ f = id_{I_0, I_1}$, we have, respectively, the maps of sets:

$$(f \circ g)|_{\tilde{X} \setminus I_1} = id_{\tilde{X} \setminus I_1} \quad \text{and} \quad (f \circ g)|_{X \setminus (I_0 \cup I_1)} = id_{X \setminus (I_0 \cup I_1)},$$

$$(g' \circ f)|_{\tilde{X} \setminus I_1} = id_{\tilde{X} \setminus I_1} \quad \text{and} \quad (g' \circ f)|_{X \setminus (I_0 \cup I_1)} = id_{X \setminus (I_0 \cup I_1)}.$$

It follows that $g|_{\tilde{X} \setminus I_1} = g'|_{\tilde{X} \setminus I_1}$ and $g|_{X \setminus (I_0 \cup I_1)} = g'|_{X \setminus (I_0 \cup I_1)}$. Hence, by the definition of seed homomorphisms, we have $g = g' : \Sigma_{I_0, I_1} \rightarrow \Sigma$, which means $f_1 : \Sigma_{I_0, I_1} \rightarrow f(\Sigma_{I_0, I_1}) = \Sigma_{I_0, I_1} \in \text{Aut}(\Sigma_{I_0, I_1})$ and then, $\text{Aut}(\Sigma_{I_0, I_1}) \rightarrow \text{H}_{id_{I_0, I_1}} : \varphi \mapsto id_{I_0, I_1} \varphi$ is a surjective group homomorphism. So, (1) holds. \square

Lemma 4.7. Let R be an \mathcal{R} -class of $\text{End}_{\text{par}}(\Sigma)$. Then R is regular if and only if there is an (I_0, I_1) -type sub-seed of Σ such that $id_{I_0, I_1} \in R$.

Proof. Assume that $id_{I_0, I_1} \in R$ for some I_0, I_1 . Since id_{I_0, I_1} is idempotent, it is regular, and also, R is regular by Proposition 4.3.

Conversely, assume R is regular. By Proposition 4.4, there exists an idempotent partial seed homomorphism $(f, \Sigma_{I'_0, I'_1}, \Sigma)$ in R . Denote $f(\Sigma_{I'_0, I'_1}) = \Sigma_{I_0, I_1}$. Hence, as a map of sets, $f : \tilde{X} \setminus I'_1 \rightarrow \tilde{X} \setminus I_1$ is surjective and $f = f|_{(\tilde{X} \setminus I'_1) \cap (\tilde{X} \setminus I_1)} \circ id_{I_0, I_1}$. It follows that

$$\#((\tilde{X} \setminus I'_1) \cap (\tilde{X} \setminus I_1)) \geq \#(Im(f^2)) = \#(Im(f)) = \#(\tilde{X} \setminus I_1).$$

Thus, $(\tilde{X} \setminus I'_1) \cap (\tilde{X} \setminus I_1) = \tilde{X} \setminus I_1$, which means $\tilde{X} \setminus I_1 \subseteq \tilde{X} \setminus I'_1$.

For any $y \in \tilde{X} \setminus I_1$, there exists $x \in \tilde{X} \setminus I'_1$ such that $f(x) = y$. So, $f(y) = f(f(x)) = f(x) = y$; thus, we have $f|_{\tilde{X} \setminus I_1} = id_{\tilde{X} \setminus I_1}$. Therefore, $f|_{\Sigma_{I_0, I_1}} = id_{I_0, I_1}$. Then, $f \circ id_{I_0, I_1} = id_{I_0, I_1}$.

Now we show $id_{I_0, I_1} \circ f = f$. Indeed, it suffices to prove that $Dom(id_{I_0, I_1} \circ f) = Dom(f)$. It is easy to see that $Dom(id_{I_0, I_1} \circ f)_{ex} = \{x \in Dom(f)_{ex} \mid f(x) \in Dom(id_{I_0, I_1})_{ex}\} = Dom(f)_{ex}$. If $Dom(id_{I_0, I_1} \circ f)_{fr} \subseteq Dom(f)_{fr}$, then there exists a $x \in Dom(f)_{fr}$ such that $f(x) \in Dom(id_{I_0, I_1})_{ex}$. According to the definition of image seed, it means there exists a $y \in Dom(f)_{ex}$ such that $f(y) = f(x)$. Since $f \circ f = f$, if $f(x) = f(y)$, then $x, y \in Dom(f)_{ex}$ or $x, y \in Dom(f)_{fr}$. It contradicts

to $x \in \text{Dom}(f)_{fr}, y \in \text{Dom}(f)_{ex}$. Therefore, we have $\text{Dom}(id_{I_0, I_1} \circ f)_{fr} = \text{Dom}(f)_{fr}$.

Thus, we have $f\mathcal{R}id_{I_0, I_1}$. Hence, $id_{I_0, I_1} \in R$. □

Corollary 4.8. *For a rooted cluster algebra $\mathcal{A}(\Sigma)$, a \mathcal{D} -class D in the semi-group $\text{End}_{\text{par}}(\Sigma)$ is regular if and only if there exists an (I_0, I_1) -type sub-seed of Σ such that $id_{I_0, I_1} \in D$.*

A seed homomorphism $f : \Sigma_1 \rightarrow \Sigma_2$ is called a **retraction** if there exists a seed homomorphism $g : \Sigma_2 \rightarrow \Sigma_1$ such that $fg = id_{\Sigma_2}$.

Lemma 4.9. *Let $f \in \text{End}_{\text{par}}(\Sigma)$ from $\Sigma_{I'_0, I'_1}$. Then, for a mixing-type sub-seed Σ_{I_0, I_1} of Σ , $f\mathcal{R}id_{I_0, I_1}$ if and only if the following statements hold:*

- (a) $f(\Sigma_{I'_0, I'_1}) = \Sigma_{I_0, I_1}$;
- (b) $f_1 : \Sigma_{I'_0, I'_1} \rightarrow \Sigma_{I_0, I_1}$ is a retraction from $\Sigma_{I'_0, I'_1}$ to Σ_{I_0, I_1} , where f_1 is defined from f by Remark 3.9;
- (c) For $x, y \in \text{Dom}(f)$, if $f(x) = f(y)$, then either $x, y \in \text{Dom}(f)_{ex}$ or $x, y \in \text{Dom}(f)_{fr}$.

Proof. By Remark 3.9, f_1 is defined to satisfy $f_1(x) = f(x)$ for all $x \in \tilde{X} \setminus I'_1$.

“If”: Since f_1 is a retraction, there exists $g_1 : \Sigma_{I_0, I_1} \rightarrow \Sigma_{I'_0, I'_1}$ such that $id_{\Sigma_{I_0, I_1}} = f_1g_1$. If $g = id_{I'_0, I'_1}g_1$, then $f \circ g = id_{I_0, I_1}f_1 \circ id_{I'_0, I'_1}g_1 = id_{I_0, I_1}f_1g_1 = id_{I_0, I_1}$, where the second equality is due to the definition of composition of f and g .

Since

$$\text{Dom}(id_{I_0, I_1} \circ f)_{ex} = \{x \in \text{Dom}(f)_{ex} \mid f(x) \in \text{Dom}(id_{I_0, I_1})_{ex}\} \stackrel{\text{by (a)}}{=} \text{Dom}(f)_{ex},$$

$$\text{Dom}(id_{I_0, I_1} \circ f)_{fr} = \{x \in \text{Dom}(f)_{fr} \mid f(x) \in \text{Dom}(id_{I_0, I_1})_{fr}\} \stackrel{\text{by (c)}}{=} \text{Dom}(f)_{fr}$$

and $(id_{I_0, I_1} \circ f)(x) = id_{I_0, I_1}(f_1(x)) = f(x)$ for all $x \in \text{Dom}(f)$. Hence, we have $f = id_{I_0, I_1} \circ f$. Thus, $f\mathcal{R}id_{I_0, I_1}$.

“Only If” If $f\mathcal{R}id_{I_0, I_1}$, then $f \circ g = id_{I_0, I_1}$ and $id_{I_0, I_1} \circ h = f$ for some $g, h \in \text{End}_{\text{par}}(\Sigma)$. By Lemma 4.5 (b), we have $f(\Sigma_{I'_0, I'_1}) = (id_{I_0, I_1})(\Sigma_{I_0, I_1}) = \Sigma_{I_0, I_1}$, i.e. (a) holds. As we have $id_{I_0, I_1} = f \circ g = id_{I_0, I_1}f_1g_1$, hence, $id_{I_0, I_1}id_{\Sigma_{I_0, I_1}} = id_{I_0, I_1}f_1g_1$. Then by Remark 3.9 (b), it follows that $f_1g_1 = id_{\Sigma_{I_0, I_1}}$, i.e. (b) holds.

For $x, y \in \tilde{X} \setminus I'_1 = \text{Dom}(f)$, let $f(x) = f(y)$. Assume that $x \in \text{Dom}(f)_{fr}$ and $y \in \text{Dom}(f)_{ex}$. Since $id_{I_0, I_1} \circ h = f$, by Fact 3.8 (a), we have $x \in \text{Dom}(h)_{fr}$ and $y \in \text{Dom}(h)_{ex}$. Moreover, $h(x) = id_{I_0, I_1}(h(x)) = f(x) =$

$f(y) = id_{I_0, I_1}(h(y)) = h(y)$. Owing to the above assumption, we have $x \in Dom(id_{I_0, I_1} \circ h)_{fr}$ and $y \in Dom(id_{I_0, I_1} \circ h)_{ex}$. Then by (7) and (8), $h(x) \in Dom(id_{I_0, I_1})_{fr}$ and $h(y) \in Dom(id_{I_0, I_1})_{ex}$. But, it contradicts with $h(x) = h(y)$. Therefore, the above assumption is not true. Similarly, $x \in Dom(f)_{ex}$ and $y \in Dom(f)_{fr}$ are also impossible. Hence, (c) follows. \square

Lemma 4.10. *For any mixing-type sub-seeds Σ_{I_0, I_1} and $\Sigma_{I'_0, I'_1}$ of Σ , it holds that*

- (1) $id_{I_0, I_1} \mathcal{L}id_{I'_0, I'_1}$ if and only if $\Sigma_{I_0, I_1} = \Sigma_{I'_0, I'_1}$;
- (2) $id_{I_0, I_1} \mathcal{R}id_{I'_0, I'_1}$ if and only if $\Sigma_{I_0, I_1} = \Sigma_{I'_0, I'_1}$.

Proof. It follows immediately by Lemma 4.5. \square

Let $f, f' \in \text{End}_{\text{par}}(\mathcal{A}(\Sigma))$ be two noncontractible partial rooted cluster morphisms. Now assume that the restricted partial seed homomorphisms f^S and f'^S in $\text{End}_{\text{par}}(\Sigma)$ via Proposition 3.14 are regular. Then we have the following.

Lemma 4.11. *Let $(f, \Sigma_{I_0, I_1}, \Sigma) \in \text{End}_{\text{par}}(\mathcal{A}(\Sigma))$ be a noncontractible ideal partial rooted cluster morphism with f^S the restricted partial seed homomorphism by Proposition 3.14. Denote $f^S(\Sigma_{I_0, I_1}) = \Sigma_{J_0, J_1}$. If $f^S \mathcal{R}id_{J_0, J_1}$ in $\text{End}_{\text{par}}(\Sigma)$, then there exists an ideal rooted cluster homomorphism $g : \mathcal{A}(\Sigma_{J_0, J_1}) \rightarrow \mathcal{A}(\Sigma_{I_0, I_1})$ such that $f \circ_{\Lambda} g = id_{\mathcal{A}(\Sigma_{J_0, J_1})}$ and thus, $f \mathcal{R}id_{\mathcal{A}(\Sigma_{J_0, J_1})}$ in $\text{End}_{\text{par}}(\mathcal{A}(\Sigma))$.*

Proof. Since f is ideal, we have $\mathcal{A}(\Sigma_{J_0, J_1}) = \mathcal{A}(f^S(\Sigma_{I_0, I_1})) = f(\mathcal{A}(\Sigma_{I_0, I_1}))$. Owing to $f^S \mathcal{R}id_{J_0, J_1}$, by Lemma 4.9, $f_1^S : \Sigma_{I_0, I_1} \rightarrow \Sigma_{J_0, J_1}$ is a retraction, where $f_1^S(x) = f(x)$ for all $x \in \tilde{X} \setminus I'_1$. Hence, there exists a seed homomorphism $g^{S'} : \Sigma_{J_0, J_1} \rightarrow \Sigma_{I_0, I_1}$ such that $f_1^S g^{S'} = id_{\Sigma_{J_0, J_1}}$, which means that $g^{S'}$ gives a bijection between the set of variables of Σ_{J_0, J_1} and that of its image seed. Owing to $g^{S'}((X_{fr} \cup J_0) \setminus J_1) \subseteq (X_{fr} \cup I_0) \setminus I_1$, $g^{S'}(\Sigma_{J_0, J_1})$ is a mixing-type sub-seed of Σ_{I_0, I_1} of (\emptyset, I'_1) type for

$$I'_1 = \{x \in \tilde{X} \setminus I_1 \mid x \notin g^{S'}(\tilde{X} \setminus J_1)\}.$$

For any $x, y \in \tilde{X} \setminus J_1$, we have $|b_{xy}| \leq |b_{g^{S'}(x)g^{S'}(y)}| \leq |b_{f_1^S g^{S'}(x) f_1^S g^{S'}(y)}| = |b_{xy}|$. Thus, $|b_{xy}| = |b_{g^{S'}(x)g^{S'}(y)}|$. Therefore, by definition of seed isomorphisms, we have

$$(13) \quad \Sigma_{J_0, J_1} \cong (\Sigma_{I_0, I_1})_{\emptyset, I'_1} = g^{S'}(\Sigma_{J_0, J_1}),$$

so $g^{S'}$ is injective.

Now we will use $g^{S'}$ to induce an injective rooted cluster morphism g .

Claim: $\mathcal{A}((\Sigma_{I_0, I_1})_{\emptyset, I'_1})$ is a rooted cluster subalgebra $\mathcal{A}(\Sigma_{I_0, I_1})$.

In fact, for any $x \in I'_1$, we have $g^{S'} f_1^S(x) \neq x$ since $g^{S'} f_1^S(x) \in g^{S'}(\tilde{X} \setminus J_1)$, whereas $x \notin g^{S'}(\tilde{X} \setminus J_1)$. For any $y \in X \setminus (I_0 \cup I_1 \cup I'_1)$, by CM3, we have $f(\mu_y(y)) = \mu_{f(y)}(f(y))$. Moreover, since $f(g^{S'} f_1^S(x)) = (f_1^S g^{S'})(f_1^S(x)) = f_1^S(x)$, comparing the exponents of $f(y)$ in both sides of $f(\mu_y(y)) = \mu_{f(y)}(f(y))$, we get

$$(14) \quad |b_{y(g^{S'} f_1^S(x))}| + |b_{yx}| \leq \sum_{z \in \tilde{X} \setminus I_1, f(z)=f(x)} |b_{yz}| = |b_{f^S(y)f^S(x)}|.$$

As $f(g^{S'} f_1^S(y)) = f(y)$, we have $g^{S'} f^S(y) = y$ since two exchangeable variables can not have the same image for a rooted cluster morphism according to CM3. Furthermore, since $f_1^S(y)$ and $f_1^S(x) \in \tilde{X} \setminus J_1$, we obtain

$$(15) \quad |b_{f_1^S(y)f_1^S(x)}| = |b_{(g^{S'} f_1^S)(y)(g^{S'} f_1^S)(x)}| = |b_{y(g^{S'} f_1^S)(x)}|.$$

Combining (14) and (15), we obtain that $b_{yx} = 0$. By Theorem 3.18, $\mathcal{A}((\Sigma_{I_0, I_1})_{\emptyset, I'_1})$ is a rooted cluster subalgebra of $\mathcal{A}(\Sigma_{I_0, I_1})$.

Following this claim, we have an injective rooted cluster morphism $\iota : \mathcal{A}((\Sigma_{I_0, I_1})_{\emptyset, I'_1}) \rightarrow \mathcal{A}(\Sigma_{I_0, I_1})$.

Let $\mathcal{A}(\Sigma_{J_0, J_1}) \xrightarrow{g'} \mathcal{A}((\Sigma_{I_0, I_1})_{\emptyset, I'_1})$ be the rooted cluster isomorphism obtained from the seed isomorphism (13).

We then obtain an injective rooted cluster morphism $g = \iota g' : \mathcal{A}(\Sigma_{J_0, J_1}) \rightarrow \mathcal{A}(\Sigma_{I_0, I_1})$.

Since $f_1^S g^{S'} = id_{\Sigma_{J_0, J_1}}$, we get $f_1 \iota g' |_{\tilde{X} \setminus J_1} = id_{\tilde{X} \setminus J_1}$; thus, it follows $f_1 \iota g' = id_{\mathcal{A}(\Sigma_{J_0, J_1})}$.

Denote $(\Sigma_{I_0, I_1})_{\emptyset, I'_1} = \Sigma_{K_0, K_1}$ for $K_0 = I_0 \setminus I'_1$ and $K_1 = I_1 \cup I'_1$.

Since $\iota : \mathcal{A}(\Sigma_{K_0, K_1}) \rightarrow \mathcal{A}(\Sigma_{I_0, I_1})$ is injective, $h_{I_0, I_1}^{K_0, K_1} = h_{I_0, I_1}^{I_0, I_1} \iota = id_{\mathcal{A}(\Sigma_{I_0, I_1})} \iota$ by Definition 3.20 (ii). Thus, we have $f \circ_{\Lambda} g = f h_{I_0, I_1}^{K_0, K_1} g' = f \iota g' = id_{\mathcal{A}(\Sigma_{J_0, J_1})}$.

By Lemma 3.17, $f : \mathcal{A}(\Sigma_{I_0, I_1}) \xrightarrow{f_1} \mathcal{A}(\Sigma_{J_0, J_1}) \xrightarrow{\tau} \mathcal{A}(\Sigma)$ with f_1 and τ , respectively, the surjective and injective rooted cluster morphisms. Then, it holds $id_{\mathcal{A}(\Sigma_{J_0, J_1})} \circ_{\Lambda} f = id_{\mathcal{A}(\Sigma_{J_0, J_1})} h_{J_0, J_1}^{J_0, J_1} f_1 = id_{\mathcal{A}(\Sigma_{J_0, J_1})} id_{\mathcal{A}(\Sigma_{J_0, J_1})} g f_1 = \tau id_{\mathcal{A}(\Sigma_{J_0, J_1})} f_1 = \tau f_1 = f$. Hence, $f \mathcal{R}id_{\mathcal{A}(\Sigma_{J_0, J_1})}$ in $\text{End}_{\text{par}}(\mathcal{A}(\Sigma))$. □

5. Proofs of Theorem 1.1, Theorem 1.2 and Theorem 1.3

5.1. Green’s equivalences in $\text{End}_{\text{par}}(\Sigma)$

Now we can obtain the characterization of Green’s equivalences in $\text{End}_{\text{par}}(\Sigma)$, as follows as given in Theorem 1.1 except of the \mathcal{J} -relation.

Proof of Theorem 1.1.

Proof. Denote the image seeds as $\Sigma_{J_0, J_1} = f(\Sigma_{I_0, I_1})$ and $\Sigma_{J'_0, J'_1} = f'(\Sigma_{I'_0, I'_1})$.

(1) “If”: According to Lemma 4.7 and Lemma 4.9, since f, f' are regular, we have $f\mathcal{R}id_{J_0, J_1}$ and $f'\mathcal{R}id_{J'_0, J'_1}$; thus, $f\mathcal{R}f'$.

“Only If”: By Lemma 4.7, there exists $id_{I'_0, I'_1}$ such that $f\mathcal{R}id_{I'_0, I'_1}$ and $f'\mathcal{R}id_{I'_0, I'_1}$ hold. By Lemma 4.9, (a) holds.

(2) “If”: We have $\Sigma_{J_0, J_1} \stackrel{g}{\cong} \Sigma_{J'_0, J'_1}$ and $f' = (id_{J_0, J_1}g) \circ f$. Thus,

$$(id_{J_0, J_1}g^{-1}) \circ f' = (id_{J_0, J_1}g^{-1}) \circ ((id_{J_0, J_1}g) \circ f) = f.$$

Therefore, $f\mathcal{L}f'$.

“Only If”: Owing to $f\mathcal{L}f'$, by Lemma 4.5, (c) follows.

From $f' = g \circ f$ and $f = g' \circ f'$, we get $f = g' \circ g \circ f$ and $f' = g \circ g' \circ f'$. Denote $\Sigma_g = \Sigma_{K_0, K_1}$ and $\Sigma_{g'} = \Sigma_{K'_0, K'_1}$. Let $g = id_{K_0, K_1}g_1$ and $g' = id_{K'_0, K'_1}g'_1$. By the definition of composition of partial seed homomorphisms, for any $y \in \tilde{X} \setminus K_1$, there exists $x \in \tilde{X} \setminus I_1$ such that $y = f(x)$; thus, $g'_1g_1(y) = g'g(y) = g'g(f(x)) = f(x) = y$. Hence, we have $g'_1g_1 = id_{\tilde{X} \setminus K_1}$. Similarly, $g_1g'_1 = id_{\tilde{X} \setminus K'_1}$. It means $g'_1g_1 = id_{\Sigma_{K_0, K_1}}$ and $g_1g'_1 = id_{\Sigma_{K'_0, K'_1}}$. By Lemma 3.4, $g_1 : \Sigma_{J_0, J_1} \rightarrow \Sigma_{J'_0, J'_1}$ is a seed isomorphism, that is, (e) follows.

(3) It follows directly from the definition of \mathcal{H} -relation and by (1) and (2).

(4) According to Lemma 4.7 and Lemma 4.9, since f, f' are regular, we have $f\mathcal{R}id_{J_0, J_1}$ and $f'\mathcal{R}id_{J'_0, J'_1}$.

“Only If”: Since $f\mathcal{D}f'$, we get $id_{J_0, J_1}\mathcal{D}id_{J'_0, J'_1}$. Therefore, by Lemma 4.6 (2), $\Sigma_{J_0, J_1} \cong \Sigma_{J'_0, J'_1}$.

“If”: Since $\Sigma_{J_0, J_1} \cong \Sigma_{J'_0, J'_1}$, we have $id_{J_0, J_1}\mathcal{D}id_{J'_0, J'_1}$ by Lemma 4.6 (2). Thus, we have $f\mathcal{D}f'$. □

As a remaining question, it needs to be considered in further work *how to characterize the \mathcal{J} -relation in $\text{End}_{\text{par}}(\Sigma)$.*

As a simple application of Green’s equivalences, we now give an fact of regular elements in $\text{End}_{\text{par}}(\Sigma(Q))$ for a linear quiver Q of type A_n , where $\Sigma = \Sigma(Q)$ means the seed determined in by Q , whose cluster variables are correspondent to the vertices of Q including frozen variables corresponding

to the frozen vertices of Q and whose exchange matrix is the skew-symmetric matrix determined by the number of arrows between vertices.

Two subsets $S_1, S_2 \subseteq$ of \widetilde{X} are said to be **linked** if there are $s_1 \in S_1, s_2 \in S_2$ such that $b_{s_1, s_2} \neq 0$.

Each (I_0, I_1) -type seed Σ_{I_0, I_1} of Σ can be decomposed as $\bigsqcup \Sigma_i$, where the mixing-type sub-seed Σ_i is determined by a connected component of the corresponding quiver of Σ_{I_0, I_1} . All such Σ_i are called the **connected components** of Σ_{I_0, I_1} . Write $\Sigma_i = (X_i, \widetilde{B}_i)$. Let $f : \Sigma_{I_0, I_1} \rightarrow \Sigma$ be a partial seed homomorphism, denote $f_i = f|_{\Sigma_i}$.

Lemma 5.1. *Let $\Sigma = \Sigma(Q)$, with a partial seed homomorphism $f : \Sigma_{I_0, I_1} \rightarrow \Sigma$ in $\text{End}_{\text{par}}(\Sigma)$. Give two statements:*

(a) *For i, j , if $f(\widetilde{X}_i)$ and $f(\widetilde{X}_j)$ are linked, then there is $k \in Q_0$ such that $f(\widetilde{X}_i \cup \widetilde{X}_j) \subseteq f(\widetilde{X}_k)$.*

(b) *For $x, y \in \widetilde{X} \setminus I_1$, if $f(x) = f(y)$, then $x, y \in X \setminus (I_0 \cup I_1)$ or $x, y \in (X_{fr} \setminus I_1) \cup I_0$.*

Then,

(1) *If f is regular, then (a) and (b) hold.*

(2) *Conversely, assume Q is a linear quiver of type A_n , then if (a) and (b) hold, we have $f : \Sigma_{I_0, I_1} \rightarrow \Sigma$ is regular in $\text{End}_{\text{par}}(\Sigma)$.*

Proof. Assume that $f(\Sigma_{I_0, I_1})$ is decomposed as $\bigsqcup \Sigma'_{i'}$, (see [18]) for a finite index I' . Denote $\Sigma'_{i'} = (X'_{i'}, \widetilde{B}'_{i'})$, where the mixing-type sub-seed $\Sigma'_{i'}$ is determined by a connected component of the corresponding quiver of $f(\Sigma_{I_0, I_1})$.

(1) We have $g \in \text{End}_{\text{par}}(\Sigma)$ such that $f \circ g \circ f = f$. Without loss of generality, assume $\text{Dom}(g) = f(\Sigma_{I_0, I_1})$. The condition (b) holds. Otherwise, there exist $x \in X \setminus (I_0 \cup I_1)$ and $y \in (X_{fr} \setminus I_1) \cup I_0$ with $f(x) = f(y)$, then x and y can not both in the domain of $f \circ g \circ f$ according to the definition. It is a contradiction.

For (a), if $f(\widetilde{X}_i)$ and $f(\widetilde{X}_j)$ are linked, then there exists $x \in f(\widetilde{X}_i), y \in f(\widetilde{X}_j)$ such that $b_{xy} \neq 0$, that is, $f(\widetilde{X}_i)$ and $f(\widetilde{X}_j)$ are in the same connected component $\Sigma'_{k'}$ of $f(\Sigma_{I_0, I_1})$. Thus, $f(\widetilde{X}_i \cup \widetilde{X}_j) = f(\widetilde{X}_i) \cup f(\widetilde{X}_j) \subseteq \widetilde{X}'_{k'}$.

As $f \circ g \circ f = f$, so $g(\widetilde{X}'_{k'}) \subseteq \widetilde{X}_k$ for some k . Since $f(x') = x$ and $f \circ g \circ f = f$, we have $x = fgf(x') \in f(g(\widetilde{X}'_{k'})) \subseteq f(\widetilde{X}_k)$. Therefore, $x \in f(\widetilde{X}_k) \cap \widetilde{X}'_{k'}$. As $\Sigma'_{k'}$ is a connect component and $f(\Sigma_k)$ is connected, we have $f(\widetilde{X}_k) \subseteq \widetilde{X}'_{k'}$. For any $z \in \widetilde{X}'_{k'}$, there exists $w \in \widetilde{X} \setminus I_1$ such that $f(w) = z$. By $f \circ g \circ f = f$, we have $fgf(w) = fg(z) = f(w) = z$. Moreover, since $z \in \widetilde{X}'_{k'}$ and $g(\widetilde{X}'_{k'}) \subseteq \widetilde{X}_k$, we have $z = fg(z) \in f(\widetilde{X}_k)$, it means that

$\widetilde{X}'_{k'} \subseteq f(\widetilde{X}_k)$. Thus, we obtain that $\widetilde{X}'_{k'} = f(\widetilde{X}_k)$. Therefore, $f(\widetilde{X}_i \cup \widetilde{X}_j) = f(\widetilde{X}_i) \cup f(\widetilde{X}_j) \subseteq \widetilde{X}'_{k'} = f(\widetilde{X}_k)$ which means the result.

(2) The condition (a) means that there exists an $i \in I$ such that $f(\widetilde{X}_i) = \widetilde{X}'_{i'}$ for each $i' \in I'$. Otherwise, we may assume that $\widetilde{X}'_{i'} = f(\widetilde{X}_1) \cup f(\widetilde{X}_2)$. As $\Sigma_{i'}$ is connected, so $f(\widetilde{X}_1)$ and $f(\widetilde{X}_2)$ are linked. Hence by (a) there exists i such that $\widetilde{X}'_{i'} = f(\widetilde{X}_1 \cup \widetilde{X}_2) \subseteq f(\widetilde{X}_i)$. As $\Sigma_{i'}$ is a connected component of $f(\Sigma_{I_0, I_1})$, so we have $\widetilde{X}'_{i'} = f(\widetilde{X}_i)$.

The condition (b) ensures that $f(x) \in \Sigma'_{i'}$ is frozen if $x \in \Sigma_i$ is frozen. In fact, note that x is in the image seed $f(\Sigma_{I_0, I_1})$, if $f(x)$ is exchangeable in $\Sigma'_{i'}$, then there is an exchangeable variable y such that $f(y) = f(x)$ by the definition of image seed. It contradicts to (b).

Since Q is a linear quiver of type A_n , it is easy to see that $f|_{\Sigma_i} : \Sigma_i \rightarrow \Sigma'_{i'}$ is an isomorphism for each i . Thus, for the seed homomorphism $f_1 : \Sigma_{I_0, I_1} \rightarrow f(\Sigma_{I_0, I_1})$ satisfying $f_1(x) = f(x)$ for all $x \in \widetilde{X} \setminus I_1$, we have a seed homomorphism $g : f(\Sigma_{I_0, I_1}) \rightarrow \Sigma_{I_0, I_1}$ such that $f_1 g = id_{f(\Sigma_{I_0, I_1})}$. Therefore, $f \mathcal{R} id_{f(\Sigma_{I_0, I_1})}$ by Lemma 4.9, and then f is regular by Proposition 4.3. \square

By Lemma 5.1, we have the following byproduct.

Corollary 5.2. *Let Q be a linear quiver of type A_n and $\Sigma = \Sigma(Q)$. If a partial seed homomorphism $f : \Sigma_{I_0, I_1} \rightarrow \Sigma$ in $\text{End}_{\text{par}}(\Sigma)$ is regular, then its $f_1 : \Sigma_{I_0, I_1} \rightarrow f(\Sigma_{I_0, I_1})$ is a retraction.*

Proof. By Lemma 5.1 (1), the conditions (a) and (b) hold. Then from the proof of Lemma 5.1 (2), we have a seed homomorphism $g : f(\Sigma_{I_0, I_1}) \rightarrow \Sigma_{I_0, I_1}$ such that $f_1 g = id_{f(\Sigma_{I_0, I_1})}$. \square

5.2. Continuation of Green’s equivalences

Here, we characterize in Theorem 1.2 the Green’s equivalences in $\text{End}_{\text{par}}(\mathcal{A}(\Sigma))$ via the corresponding relations in $\text{End}_{\text{par}}(\Sigma)$.

Proof of Theorem 1.2.

Proof. Denote $f^S(\Sigma_{I_0, I_1}) = \Sigma_{J_0, J_1}$ and $f'^S(\Sigma_{I'_0, I'_1}) = \Sigma_{J'_0, J'_1}$.

First, we prove in the case for $\mathcal{F} = \mathcal{R}$. “If”: By Lemma 4.7 and Theorem 1.1 (1), we have $f^S \mathcal{R} id_{J_0, J_1}$ and $f'^S \mathcal{R} id_{J'_0, J'_1}$. According to Lemma 4.11, we have $f \mathcal{R} id_{\mathcal{A}(\Sigma_{J_0, J_1})}$ and $f' \mathcal{R} id_{\mathcal{A}(\Sigma_{J'_0, J'_1})}$. Therefore, we have $f \mathcal{R} f'$.

“Only If”: Since $f \mathcal{R} f'$, there exist $g, g' \in \text{End}_{\text{par}}(\mathcal{A}(\Sigma))$ such that $f = f' \circ_{\Delta} g'$ and $f' = f \circ_{\Delta} g$. By Lemma 3.17, we have $g = \tau g_1$ and $g' = \tau' g'_1$ for

some surjective rooted cluster morphisms g_1, g'_1 and injective rooted cluster morphisms τ, τ' . Thus, $f \circ_{\Lambda} g = fhg_1 = f'$ and $f' \circ_{\Lambda} g' = f'h'g'_1 = f$ for some ideal rooted cluster morphisms h and h' . It follows that

$$(16) \quad fhg_1 = f' \quad \text{and} \quad f'h'g'_1 = f.$$

Since f is noncontractible, we have $f(x) \notin \mathbb{Z}$ for all $x \in \tilde{X} \setminus I_1$. Then, using (16), $h'g'_1$ is noncontractible. Similarly, hg_1 is noncontractible. Hence, the partial seed homomorphisms $(hg_1)^S$ and $(h'g'_1)^S$ determined by hg_1 and $h'g'_1$, respectively, due to Proposition 3.14 are in $\text{End}_{\text{par}}(\Sigma)$. From (16), Lemma 3.19 and by definition, we have $f^S \circ (hg_1)^S = f'^S$ and $f'^S \circ (h'g'_1)^S = f^S$. Therefore, $f^S \mathcal{R} f'^S$.

Second, we prove in the case $\mathcal{F} = \mathcal{L}$. By Lemma 3.17, we have

$$f : \mathcal{A}(\Sigma_{I_0, I_1}) \xrightarrow{f_1} \mathcal{A}(\Sigma_{J_0, J_1}) \xrightarrow{\tau} \mathcal{A}(\Sigma) \quad \text{and} \quad f' : \mathcal{A}(\Sigma_{I'_0, I'_1}) \xrightarrow{f'_1} \mathcal{A}(\Sigma_{J'_0, J'_1}) \xrightarrow{\tau'} \mathcal{A}(\Sigma).$$

“Only if”: By Theorem 1.1 (2), we have $\Sigma_{I_0, I_1} = \Sigma_{I'_0, I'_1}$ and there exists a seed isomorphism $\phi : \Sigma_{J_0, J_1} \rightarrow \Sigma_{J'_0, J'_1}$ such that $f'^S = \phi f^S$. By Proposition 3.16, there is a rooted cluster isomorphism $\tilde{\phi} : \mathcal{A}(\Sigma_{J_0, J_1}) \rightarrow \mathcal{A}(\Sigma_{J'_0, J'_1})$. Since $f'^S = \phi f^S$, we have $\tilde{\phi} f_1(x) = \phi f^S(x) = f'^S(x) = f'_1(x)$ for any $x \in \tilde{X} \setminus I_1$, that is, $f'_1|_{\tilde{X} \setminus I'_1} = \tilde{\phi} f_1|_{\tilde{X} \setminus I_1}$. Moreover, since f'_1 and ϕf_1 are noncontractible, by Lemma 3.15, it follows that $f'_1 = \phi f_1$.

Let $g = \tau' \phi$ and $g' = \tau \phi^{-1}$. Therefore,

$$g \circ_{\Lambda} f = \tau' \phi h_{J_0, J_1}^{J'_0, J'_1} f_1 = \tau' \phi \text{id}_{\mathcal{A}(\Sigma_{J_0, J_1})} f_1 = \tau' f'_1 = f'.$$

Similarly, $f = g' \circ_{\Lambda} f'$. Thus, we have $f \mathcal{L} f'$.

“If”: Since $f \mathcal{L} f'$, there exist $g, g' \in \text{End}_{\text{par}}(\mathcal{A}(\Sigma))$ such that $g \circ_{\Lambda} f = ghf_1 = f'$ and $g' \circ_{\Lambda} f' = g'h'f'_1 = f$ for some $h, h' \in \Lambda$. It is clear that $\Sigma_{I_0, I_1} = \Sigma_{I'_0, I'_1}$. Now we show $f'^S = (\text{id}_{J'_0, J'_1} \varphi'^S) \circ f^S$ with a seed isomorphism $\varphi'^S : \Sigma_{J_0, J_1} \cong \Sigma_{J'_0, J'_1}$.

From $f(\mathcal{A}(\Sigma_{I_0, I_1})) = \mathcal{A}(\Sigma_{J_0, J_1})$ and $f'_1(\mathcal{A}(\Sigma_{I'_0, I'_1})) = \mathcal{A}(\Sigma_{J'_0, J'_1})$, we have $g'h'(\mathcal{A}(\Sigma_{J'_0, J'_1})) = \mathcal{A}(\Sigma_{J_0, J_1})$. By Lemma 3.17, there exists a surjective rooted cluster morphism $\varphi : \mathcal{A}(\Sigma_{J'_0, J'_1}) \rightarrow \mathcal{A}(\Sigma_{J_0, J_1})$ such that $g'h' = \tau \varphi$. Thus, $\tau \varphi f'_1 = g'h'f'_1 = f = \tau f_1$.

But, since τ is injective, we get $\varphi f'_1 = f_1$. Similarly, there exists a surjective rooted cluster morphism $\varphi' : \mathcal{A}(\Sigma_{J_0, J_1}) \rightarrow \mathcal{A}(\Sigma_{J'_0, J'_1})$ such that $\varphi' f_1 = f'_1$. Hence, $\varphi \varphi' f_1 = f_1$ and $\varphi' \varphi f'_1 = f'_1$.

Moreover, since $Im f_1 = \mathcal{A}(\Sigma_{J_0, J_1})$ and $Im f'_1 = \mathcal{A}(\Sigma_{J'_0, J'_1})$, we obtain $\varphi\varphi' = id_{\mathcal{A}(\Sigma_{J_0, J_1})}$ and $\varphi'\varphi = id_{\mathcal{A}(\Sigma_{J'_0, J'_1})}$. Thus, the restricted seed homomorphisms φ^S and φ'^S of φ and φ' , respectively, are isomorphisms:

$$\Sigma_{J'_0, J'_1} \xrightarrow{\varphi^S} \Sigma_{J_0, J_1} \quad \text{and} \quad \Sigma_{J_0, J_1} \xrightarrow{\varphi'^S} \Sigma_{J'_0, J'_1}.$$

Owing to $f'_1 = \varphi' f_1$, analyzing on each initial cluster variables, we have $f'^S = (id_{\Sigma_{J'_0, J'_1}} \varphi'^S) \circ f^S$.

In summary, by Theorem 1.1 (2), the result holds for the case $\mathcal{F} = \mathcal{L}$.

Since $\mathcal{H} = \mathcal{L} \wedge \mathcal{R}$ and $\mathcal{H} = \mathcal{L} \vee \mathcal{R}$, the cases $\mathcal{F} = \mathcal{H}$ and $\mathcal{F} = \mathcal{D}$ follow immediately. □

We call the connection given in this theorem and its proof the **continuation of Green’s equivalences** from $\text{End}_{\text{par}}(\Sigma)$ to $\text{End}_{\text{par}}(\mathcal{A}(\Sigma))$

5.3. Iso-classes of sub-rooted cluster algebras via regular \mathcal{D} -classes

As the embody of the meaning of Green’s equivalences in cluster algebras, we now give in Theorem 1.3 a one-to-one correspondence between the isomorphic classes of sub-rooted cluster algebras of $\mathcal{A}(\Sigma)$ and the regular \mathcal{D} -classes in $\text{End}_{\text{par}}(\Sigma)$.

An isomorphism of two sub-rooted cluster algebras of a rooted cluster algebra is under the meaning of rooted cluster isomorphism, replying on the fact from Proposition 3.16.

Proof of Theorem 1.3.

Proof. By the definition of sub-rooted cluster algebra, $\mathcal{A}(\Sigma') \cong \mathcal{A}(\Sigma_{I_0, I_1})$ for some $I_0 \subseteq X$ and $I_1 \subseteq \tilde{X}$, then $[\mathcal{A}(\Sigma')] = [\mathcal{A}(\Sigma_{I_0, I_1})]$. By Proposition 3.16, $\Sigma' \cong \Sigma_{I_0, I_1}$ in **Seed**.

According to Lemma 4.6, φ is well-defined. By Corollary 4.8, for any regular \mathcal{D} -class D , there exist I_0 and I_1 such that $id_{I_0, I_1} \in D$, which is equivalent to $D_{id_{I_0, I_1}} = D$. Therefore, $\varphi([\mathcal{A}(\Sigma_{I_0, I_1})]) = D$, that is, φ is surjective.

If $D = D_{id_{I_0, I_1}} = D_{id_{I'_0, I'_1}}$, then $id_{I_0, I_1} \mathcal{D} id_{I'_0, I'_1}$. By Lemma 4.6, if we have $\Sigma_{I_0, I_1} \cong \Sigma_{I'_0, I'_1}$, then $[\mathcal{A}(\Sigma_{I_0, I_1})] = [\mathcal{A}(\Sigma_{I'_0, I'_1})]$. It means that φ is injective. □

By this theorem and Theorem 3.18, as an application, we obtain the following.

Corollary 5.3. *For a rooted cluster algebra $\mathcal{A}(\Sigma)$ and its mixing-type sub-rooted cluster algebra $\mathcal{A}(\Sigma')$, the following hold:*

- (1) $\mathcal{A}(\Sigma')$ is a pure cluster subalgebra of $\mathcal{A}(\Sigma)$ if and only if there exists $I_0 \subseteq X$ such that $id_{I_0, \emptyset}$ belongs to the corresponding regular \mathcal{D} -class of $\mathcal{A}(\Sigma')$.
- (2) $\mathcal{A}(\Sigma')$ is a pure sub-cluster algebra of $\mathcal{A}(\Sigma)$ if and only if there exists $I_1 \subseteq \tilde{X}$ such that id_{\emptyset, I_1} belongs to the corresponding regular \mathcal{D} -class of $\mathcal{A}(\Sigma')$.
- (3) $\mathcal{A}(\Sigma')$ is a rooted cluster subalgebra of $\mathcal{A}(\Sigma)$ if and only if there exist $I_0 \subseteq X$ and $I_1 \subseteq \tilde{X}$ such that id_{I_0, I_1} belongs to the corresponding regular \mathcal{D} -class of $\mathcal{A}(\Sigma')$ and $b_{xy} = 0$ for $x \in X \setminus (I_0 \cup I_1)$ and $y \in I_1$ in \tilde{B} .

In summary of the above discussion, for a given rooted cluster algebra $\mathcal{A}(\Sigma)$, we now obtain the following conclusions:

- (1) In a regular \mathcal{D} -class D , each \mathcal{R} -class R contains just one idempotent in the form id_{I_0, I_1} (by Lemma 4.7, Corollary 4.8 and Lemma 4.10(2)).
- (2) In a regular \mathcal{D} -class D , each \mathcal{L} -class L contains at most one idempotent in the form id_{I_0, I_1} (by Lemma 4.10(1)).
- (3) The number of \mathcal{H} -classes containing identity in the form id_{I_0, I_1} is equal to that of the regular \mathcal{R} -classes and is not larger than that of the regular \mathcal{L} -classes (by $\mathcal{H} = \mathcal{L} \wedge \mathcal{R}$, (1) and (2) and Proposition 4.1).
- (4) The \mathcal{H} -class H_{I_0, I_1} containing id_{I_0, I_1} is isomorphic to the automorphism group of Σ_{I_0, I_1} (by Lemma 4.6(3)).
- (5) The number of isomorphism classes of sub-rooted cluster algebras of type (I_0, I_1) in $\mathcal{A}(\Sigma)$ is equal to that of regular \mathcal{D} -classes in $\text{End}_{\text{par}}(\Sigma)$ (by Theorem 1.3).

6. Sub-rooted cluster algebras from Riemannian surfaces

In this part, we firstly characterize sub-rooted cluster algebras of rooted cluster algebras from oriented Riemannian surfaces via paunched surfaces. Moreover, we build the relation between sub-rooted cluster algebras from Riemannian surfaces and the corresponding surfaces by cutting and paunching at arcs, which is called paunched surfaces from the original surfaces, defined in the sequel, and then find the connection to regular \mathcal{D} -classes of the semigroup consisting of partial seed homomorphisms.

Cluster algebras arising from surfaces are introduced in [8][9]. Let (S, M) be a Riemannian surface with M the set of marked points. A tagged arc is an arc in which each end has been tagged in one of two ways, plain or notched, which satisfies some conditions. A tagged triangulation T is a maximal collection of pairwise compatible tagged arcs in (S, M) . A lamination L on (S, M) is a finite collection of non-self-intersecting and pairwise

non-intersecting curves in S , modulo isotopy relative to M , subject to some restrictions. For details, refer to [9]. A multi-lamination \mathcal{L} is a finite family of laminations.

It is well known [9] that the seeds of a cluster algebra $\mathcal{A}(S, M)$ are one-to-one correspondent to the tagged triangulations of (S, M) , as well as the exchangeable variables are one-to-one correspondent to the tagged arcs in (S, M) and the frozen variables are one-to-one correspondent to multi-laminations.

In [9], τ is defined as the map from the untagged arcs to the tagged arcs. More precisely, if γ does not cut out a once-punctured monogon (i.e. a loop with a puncture point inside), then $\tau(\gamma)$ is γ with both ends tagged plain. Otherwise, let γ be a loop, based at a marked point a , cutting out a punctured monogon with the sole puncture b inside it. Let β be the unique arc connecting a and b and compatible with γ . Then $\tau(\gamma)$ is obtained by tagging β plain at a and notched at b .

Theorem 6.1. ([8], Theorem 7.11) *Assume that (S, M) is not a closed surface with one or two punctures. Let \mathcal{A} be a cluster algebra with $B(\mathcal{A}) = B(S, M)$. Then the cluster complex of \mathcal{A} is isomorphic to the tagged arc complex.*

Theorem 6.2. ([9], Theorem 13.6) *For a fixed tagged triangulation T , the map $L \rightarrow (b_{\gamma, L}(T))_{\gamma \in T}$ is a bijection between integral unbounded measured laminations and \mathbb{Z}^n .*

In Theorem 6.2, $b_{\gamma, L}(T) = b_{\gamma}(T, L)$ is the **Shear coordinate** of L with respect to the triangulation T , which is defined as a sum of contributions from all intersections of curves in L with the arc γ . For details, see [9].

This theorem means that the laminations on a surface (S, M) are one-by-one correspondence to the frozen variables in the cluster algebras associate with (S, M) . So, we also use x to denote the Lamination on (S, M) in case x is a frozen variable.

Definition 6.3. *Assume that T is a tagged triangulation of (S, M) , x is an exchangeable cluster variables in the seed $\Sigma(T)$ from T . Without loss of confusion, we also write x as the corresponding tagged arc in T . Let (S_x, M) be the new Riemannian surface which is constructed from (S, M) through cutting along the arc x . More precisely, there are five cases respectively, see Figure 1 corresponding to (1) x is not a loop with the two end points are on the boundary, (2) x is a loop with the endpoint on the boundary, (3) x connects one marked point on the boundary and one puncture, (4) x is not a*

loop with the end points are two punctures, (5) x is a loop with the endpoint is a puncture. For details, see [23], [25]. In order to use such surface in the five cases conveniently, we call it the x -paunched surface from (S, M) .

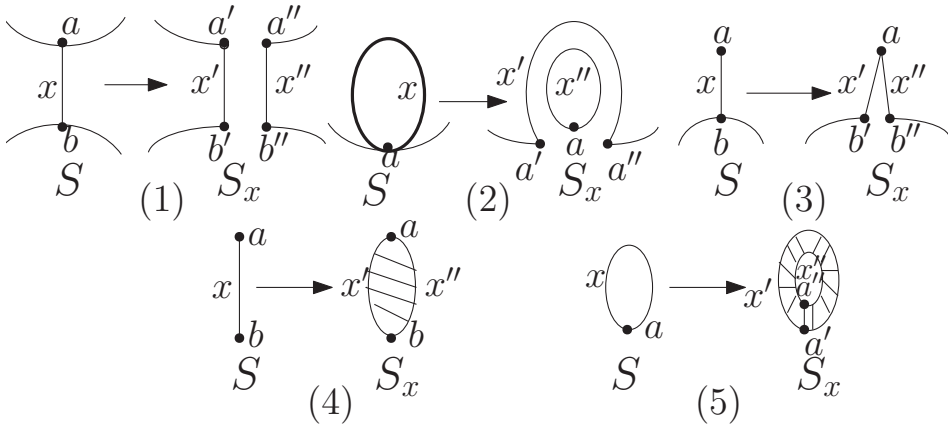


Figure 1

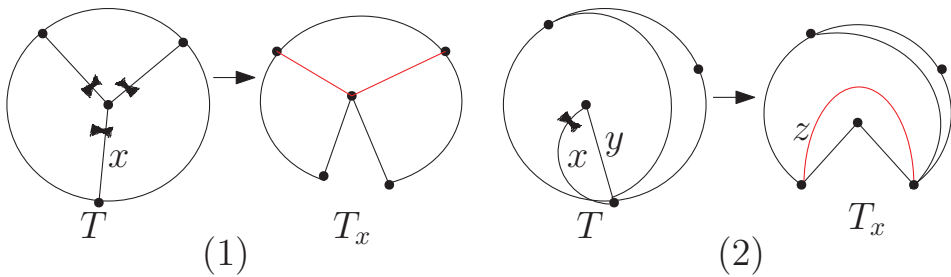


Figure 2

Denote by T_x the corresponding tagged triangulation of (S_x, M) . More precisely, assume that T° is the ideal triangulation associated with T and x° is the arc in T° corresponding to x . If x° is not in a self-fold triangle, then T_x is obtained by delete x and making all arcs are tagged plain at the end points of x . See Figure 2 (1); if x° in a self-fold triangle in T° , assume that y° is the another arc of the self-fold triangle and y is the tagged arc in T corresponding to y° , then $T_x = (T \setminus \{x, y\}) \cup \{z\}$, where z is the unfolded arc in the self-fold triangle, see Figure 2 (2).

Now we give the corresponding lamination L_x when we freeze an exchangeable cluster variable x .

In case (1), when x is not a loop with the two end points are on the boundary. Choose an unmarked point a^+ (a^- respectively) on the boundary of S which lying on the counterclockwise (clockwise respectively) orientation of a . Similarly, we can pick up b^+ and b^- on the boundary. Let L_x^+ be the curve (up to isotopy relative to M) in S_x connecting a^+ and b^- such that the arcs $\widehat{a'a^+L_x^+b^-b'}$ and x' are isotopy relative to M , where $\widehat{a'a^+}$ means the arc on the boundary of S_x which from a' to a^+ . Dually, we can define curve L_x^- . In this case, setting $L_x = \{L_x^+, L_x^-\}$. See Figure 3 (1).

In case (2), when x is a loop with the endpoint on the boundary. Choose an unmarked point a^+ (a^- respectively) on the boundary of S which lying on the clockwise (counterclockwise respectively) orientation of a' (a'' respectively). Let L_x^+ be the curve (up to isotopy relative to M) in S_x connecting a^+ and a^- such that the arcs $\widehat{a'a^+L_x^+a^-a''}$ and x' are isotopy relative to M , where $\widehat{a'a^+}$ means the arc on the boundary of S_x which from a' to a^+ . Let L_x^- be a loop (up to isotopy relative to M) in the area enclosed by x'' such that there are no marked points between L_x^- and x'' excepting a . In this case, setting $L_x = \{L_x^+, L_x^-\}$. See Figure 3 (2).

In case (3), when x connects one marked point on the boundary and one puncture. Choose an unmarked point a^+ (a^- respectively) on the boundary of S which lying on the counterclockwise (clockwise respectively) orientation of a' (a'' respectively). Let L_x^+ be the curve (up to isotopy relative to M) in S_x connecting a^+ and a^- such that the arcs $\widehat{a'a^+L_x^+a^-a''}$ and x' are isotopy relative to M , where $\widehat{a'a^+}$ means the arc on the boundary of S_x which from a' to a^+ . See Figure 3 (3).

In case (4), when x is not a loop with the end points are two punctures. Let L_x be a loop (up to isotopy relative to M) surroundings x' and x'' such that there are no marked points between L_x and the loop formed by x' and x'' excepting a and b . See Figure 3 (4).

In case (5), when x is a loop with the endpoint is a puncture. Let L_x^+ be a loop (up to isotopy relative to M) surroundings x' such that there are no marked points between L_x^+ and x^+ and x' excepting a' . Let L_x^- be a loop (up to isotopy relative to M) in the area enclosed by x'' such that there are no marked points between L_x^- and x'' excepting a'' . In this case, setting $L_x = \{L_x^+, L_x^-\}$. See Figure 3 (5).

In case x^o is not contained in a self-folded triangle and x has just one endpoint tagged notch (we regard a loop x with the endpoints are tagged notch to this case). Let γ be a curve in L for some $L \in \mathcal{L}$. If γ does not spiral into the endpoints of x , assume that x divides γ into $\gamma_1, \dots, \gamma_k$ for some k , define γ^x to be subset of $\{\gamma_i \mid i = 1, \dots, k\}$ obtained by deleting the curves

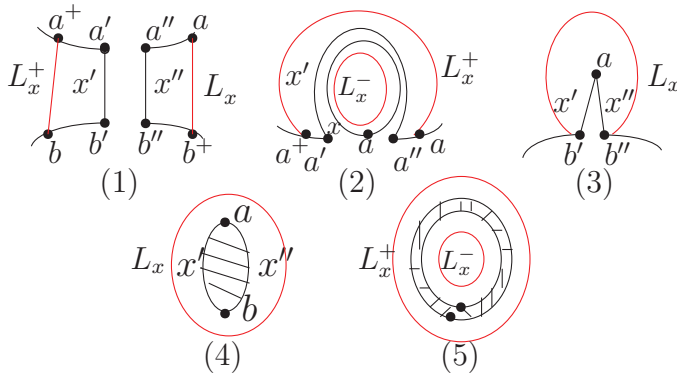


Figure 3

which are not allowed in a lamination. If γ spirals into an endpoint of x , let γ' be the curve spirals into the same point as γ with opposite direction, assume that x divides γ' into $\dots, \gamma'_1, \dots, \gamma'_k, \dots$, define γ^x to be the subset of $\{\gamma'_i \mid i = \dots, 1, \dots, k, \dots\}$ obtained by deleting the curves which are not allowed in a lamination. Note that since γ spirals into an endpoint of x , there are only finite curves in γ^x . Denote $L^{(x)} = \bigcup_{\gamma \in L} \gamma^x$.

In case x^o is not contained in a self-folded triangle and both endpoints of x tagged notch or tagged plain. Let γ be a curve in L for some $L \in \mathcal{L}$. If γ does not spiral into the endpoints of x , assume that x divides γ into $\gamma_1, \dots, \gamma_k$ for some k , define γ^x to be subset of $\{\gamma_i \mid i = 1, \dots, k\}$ obtained by deleting the curves which are not allowed in a lamination. If γ spirals into an endpoint of x , assume that x divides γ into $\dots, \gamma_1, \dots, \gamma_k, \dots$, define γ^x to be the subset of $\{\gamma_i \mid i = \dots, 1, \dots, k, \dots\}$ obtained by deleting the curves which are not allowed in a lamination. Note that since γ spirals into an endpoint of x , there are only finite curves in γ^x . Denote $L^{(x)} = \bigcup_{\gamma \in L} \gamma^x$.

In case x^o is contained in a self-folded triangle and x^o is folded. Let γ be a curve in L for some $L \in \mathcal{L}$. If γ does not spiral into the endpoints of x , assume that z divides γ into $\gamma_1, \dots, \gamma_k$ for some k , define γ^x to be subset of $\{\gamma_i \mid i = 1, \dots, k\}$ obtained by deleting the curves which are not allowed in a lamination. If γ spirals into an endpoint of x , let γ' be the curve spirals into the same point as γ with opposite direction, assume that x divides γ' into $\dots, \gamma'_1, \dots, \gamma'_k, \dots$, define γ^x to be the subset of $\{\gamma'_i \mid i = \dots, 1, \dots, k, \dots\}$ obtained by deleting the curves which are not allowed in a lamination. Note that since γ spirals into an endpoint of x , there are only finite curves in γ^x . Denote $L^{(x)} = \bigcup_{\gamma \in L} \gamma^x$.

In case x^o is contained in a self-folded triangle and x^o is unfolded. Let γ be a curve in L for some $L \in \mathcal{L}$. If γ does not spiral into the endpoints of x , assume that x divides γ into $\gamma_1, \dots, \gamma_k$ for some k , define γ^x to be subset of $\{\gamma_i \mid i = 1, \dots, k\}$ obtained by deleting the curves which are not allowed in a lamination. If γ spirals into an endpoint of x , assume that x divides γ into $\dots, \gamma_1, \dots, \gamma_k, \dots$, define γ^x to be the subset of $\{\gamma_i \mid i = \dots, 1, \dots, k, \dots\}$ obtained by deleting the curves which are not allowed in a lamination. Note that since γ spirals into an endpoint of x , there are only finite curves in γ^x . Denote $L^{(x)} = \bigcup_{\gamma \in L} \gamma^x$.

In both cases, let $\mathcal{L}^{(x)} = \{L^{(x)} \mid L \in \mathcal{L}\}$.

Figure 4 illustrates the case that x^o is contained in a self-folded triangle and x^o is unfolded and γ spirals into the endpoints of x .

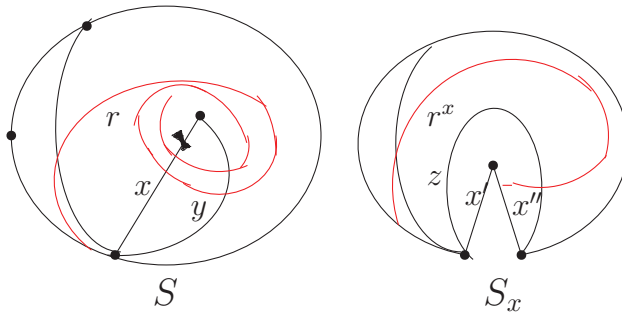


Figure 4

We have the following observations,

Lemma 6.4. *With the assumptions as above, let (S, M) be a marked surface, T be a tagged triangulation and \mathcal{L} be a multi-lamination of (S, M) . Denote by $\Sigma(S, M, \mathcal{L}, T)$ the seed determined by \mathcal{L} and T . Let x be a cluster variable of $\Sigma(S, M, \mathcal{L}, T)$. Then*

(1) $\mathcal{A}(\Sigma(S, M, \mathcal{L}, T)_{\emptyset, \{x\}})$ is a cluster algebra arising from certain surface, more explicitly,

(a) If x is a frozen variable, then $\mathcal{A}(\Sigma(S, M, \mathcal{L}, T)_{\emptyset, \{x\}}) = \mathcal{A}(\Sigma(S, M, \mathcal{L} \setminus \{x\}, T))$;

(b) If $x \in T$ is a tagged arc, then $\mathcal{A}(\Sigma(S, M, \mathcal{L}, T)_{\emptyset, \{x\}}) = \mathcal{A}(\Sigma(S_x, M, \mathcal{L}^x, T_x))$;

(2) $\mathcal{A}(\Sigma(S, M, \mathcal{L}, T)_{\{x\}, \emptyset})$ is a cluster algebra arising from the surface (S_x, M) , more explicitly,

$$\mathcal{A}(\Sigma(S, M, \mathcal{L}, T)_{\{x\}, \emptyset}) = \mathcal{A}(\Sigma(S_x, M, \mathcal{L}^x \cup \{L_x\}, T_x)).$$

Proof. (1) (a) It is clear since the frozen variable x correspondence to the lamination x .

(b) Assume
$$\tilde{B}(T) = \begin{pmatrix} B(T) \\ (b_{yL})_{y \in T, L \in \mathcal{L}} \end{pmatrix}, \quad \tilde{B}(T_x) = \begin{pmatrix} B(T_x) \\ (b'_{yL(x)})_{y \in T_x, L(x) \in \mathcal{L}(x)} \\ (b'_{yL_x})_{y \in T_x} \end{pmatrix}.$$

Let T^o be the ideal triangulation associate to T . By the definition, the exchange matrix $B(T)$ is constructed by T^o . Let T_x^o be the ideal triangulation associate to T_x . If x^o is not in a self-folded triangle, then T_x^o is obtained from T^o by deleting x^o . Thus, for any two arcs $w, w' \neq x^o$ in T^o , we have $b_{ww'}(T^o) = b_{ww'}(T_x^o)$. If x^o is in a self-folded triangle, assume z' is the folded arc in the self-folded triangle. According to our construction, we have $T_x^o = T^o \setminus \{z'\}$. Thus, for any two arcs $w, w' \neq z'$ in T^o , we have $b_{ww'}(T^o) = b_{ww'}(T_x^o)$. Therefore, in both cases, we have $B(T)_{\emptyset, \{x\}} = B(T_x)$.

Let L be a lamination in \mathcal{L} , $\gamma \in L$ and $y (\neq x)$ be an arc in (S, M) which does not intersect with x .

In case x, y share a puncture P as their common endpoints and γ spirals into P . Assume that x divides γ into $\dots, \gamma_1, \dots, \gamma_k, \dots$. If $\tau^{-1}(x)$ and $\tau^{-1}(y)$ are not in a self-folded triangle, since the arcs in $\{\dots, \gamma_1, \dots, \gamma_k, \dots\} \setminus \gamma^x$ do not contribute to Shear coordinate. Thus, the intersections of γ^x and y are locally the same as the intersections of γ and y . If $\tau^{-1}(x)$ and $\tau^{-1}(y)$ are in a self-folded triangle, assume that z is the unfolded arc in the self-folded triangle, since b_{yL} is defined via the arc z . By the construction of γ^x , the intersections of γ^x and z are locally the same as the intersections of γ and z .

Otherwise, x, y share a puncture P as their common endpoints but γ does not spiral into P or x, y do not share a puncture as their common endpoints. Note that for any curve $\gamma \in L$ which does not spirals into the endpoints of x and arc y which does not share a puncture as there common endpoints, according to our definition of γ^x , it can be seen that the intersections of γ^x and y are locally the same as the intersections of γ and y .

Thus, we have $b_{yL} = b'_{yL(x)}$. It follows $(\tilde{B}(T))_{\emptyset, x} = \tilde{B}(T_x)$. Therefore, the result holds.

(2) Assume
$$\tilde{B}(T) = \begin{pmatrix} B(T) \\ (b_{yL})_{y \in T, L \in \mathcal{L}} \end{pmatrix}, \quad \tilde{B}(T_x) = \begin{pmatrix} B(T_x) \\ (b'_{yL(x)})_{y \in T_x, L(x) \in \mathcal{L}(x)} \\ (b'_{yL_x})_{y \in T_x} \end{pmatrix}.$$

By discussion on the corresponding lamination L_x while freezing an exchangeable variable x , analysis case by case (See Figure 3), we can see that

the Shear coordinate $b_y(T, L_x)$ contributes $+1$ (-1 respectively) if and only if there exists a triangle Δ such that $b_{yx} = 1$ ($b_{yx} = -1$ respectively). If the Shear coordinate $b_y(T, L_x)$ contributes 0 , then there exists no triangle such that $b_{yx} = 1$ or $b_{yx} = -1$. For example, in the case (1), we have illustrated Figure 5 for explanation. In fact, $b_y(T, L_x) = b_{yx} = 0$, $b_z(T, L_x) = b_{zx} = 1$ and $b_{z'}(T, L_x) = b_{z'x} = -1$.

Thus, $b_{yx} = b'_{yL_x}$ for all $y \in T$ due to the definition of b_{yx} and b'_{yL_x} . Combining the proof of (b), thus, we have $(\tilde{B}(T))_{x,\emptyset} = \tilde{B}(T_x)$. Therefore, the result follows. \square

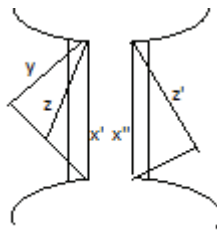


Figure 5

For a set I of some arcs in T (or say, $I \subset X$), denote by (S_I, M) the new Riemannian surface which is constructed from (S, M) through cutting all arcs $x \in I$, equivalently which is obtained recursively through constructing x -punched surfaces at $|I|$ -times. We call (S_I, M) the **I -punched surface** from (S, M) .

Denote by T_I the tagged triangulation of (S_I, M) constructed from T_x for all $x \in I$ step by step. For each arc γ in S , let I divide γ into $\dots, \gamma_1, \dots, \gamma_k, \dots$ (An example is given in Figure 6). Let γ^I be the subset of $\{\dots, \gamma_1, \dots, \gamma_k, \dots\}$ obtained by deleting the arcs which are not allowed in a lamination. If I do not intersect with γ , then set $\gamma^I = \{\gamma\}$. Denote $L^I = \bigcup_{\gamma \in L} \gamma^I$, $\mathcal{L}^I = \{L^I \mid L \in \mathcal{L}\}$.

Using the above lemma step by step, we have the following characterization on $\mathcal{A}(\Sigma(S, M, T, \mathcal{L})_{I_0, I_1})$.

Theorem 6.5. *With the assumptions as above, let (S, M) be a marked surface, T be a tagged triangulation and \mathcal{L} be a multi-lamination of (S, M) . Let I_0, I_1 be two subsets of initial cluster variables with $I_0 \cap I_1 = \emptyset$, then $\mathcal{A}(\Sigma(S, M, \mathcal{L}, T)_{I_0, I_1})$ is a cluster algebra from the surface $(S_{(I_0 \cup I_1) \cap X}, M)$, where X is the cluster in the seed $\Sigma(S, M, \mathcal{L}, T)$. More explicitly, denote*

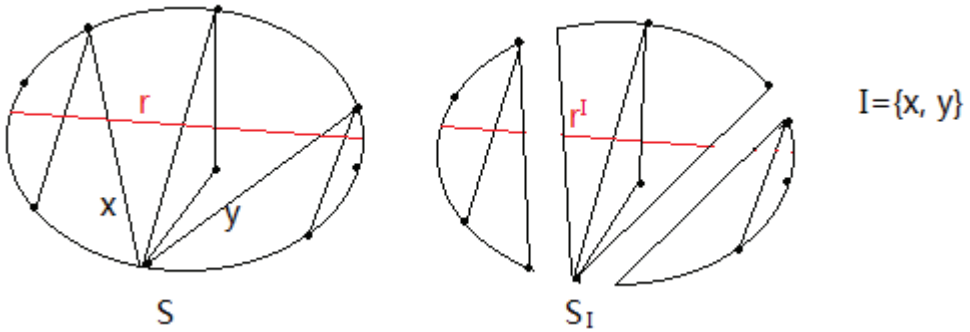


Figure 6

$J = (I_0 \cup I_1) \cap X$, then

$$\mathcal{A}(\Sigma(S, M, \mathcal{L}, T)_{I_0, I_1}) = \mathcal{A}(\Sigma(S_J, M, (\mathcal{L} \setminus I_1)^J \cup \{L_x \mid x \in I_0\}), T_J).$$

Following this theorem, we call $(S_J, M, (\mathcal{L} \setminus I_1)^J \cup \{L_x \mid x \in J\}, T_J)$ the (I_0, I_1) -**paunched surface** from the surface (S, M, \mathcal{L}, T) for $J = (I_0 \cup I_1) \cap X$.

Using of the above results, we now discuss the correspondence between sub-rooted cluster algebras and paunched surfaces.

For two surfaces (S, M) and (S', M') , a **homeomorphism** f from (S, M) to (S', M') is a homeomorphism (or say, a topological isomorphism) $f : S \rightarrow S'$ which induces a bijection from M to M' . As a homeomorphism, f maps boundary points to boundary points and punctures to punctures. In this case we say (S, M) and (S', M') to be **homeomorphic** under f . If (S, M) and (S', M') have respectively tagged triangulations T and T' and multi-laminations \mathcal{L} and \mathcal{L}' , we say (S, M, T, \mathcal{L}) and $(S', M', T', \mathcal{L}')$ to be **isomorphic** if there is a homeomorphic map f from (S, M) to (S', M') which maps T to T' and induces bijections from \mathcal{L} to \mathcal{L}' , denote as $(S, M, T, \mathcal{L}) \cong (S', M', T', \mathcal{L}')$.

Note that every tagged triangulation is ideal triangulation if the surface without punctures and using Theorem 6.2, we have:

Lemma 6.6. (Proposition 14.1, [8]) Assume that $(S_1, M_1, \mathcal{L}_1, T_1)$ and $(S_2, M_2, \mathcal{L}_2, T_2)$ are two surfaces without punctures and their corresponding quivers $Q(T_1)$ and $Q(T_2)$ are connected. Assume there is a bijection $\pi : \mathcal{L}_1 \rightarrow \mathcal{L}_2$ such that $b_{\gamma L} = b'_{\varphi(\gamma)\pi(L)}$ (respectively, $b_{\gamma L} = -b'_{\varphi(\gamma)\pi(L)}$) for any arc γ in T and lamination L in \mathcal{L}_1 . If $Q(T_1) \stackrel{\varphi}{\cong} Q(T_2)$ (respectively, $Q(T_1) \stackrel{\varphi}{\cong} Q(T_2)^{op}$), then $(S_1, M_1, \mathcal{L}_1, T_1) \cong (S_2, M_2, \mathcal{L}_2, T_2)$.

This lemma tells us that corresponding quiver is a new algebraic invariant of the oriented surface with tagged triangulation in the case without punctures. However, it is negative in the case with punctures in general.

For example, we have two cluster algebras $\mathcal{A}_1 = \mathcal{A}(\Sigma(S_1, M_1, \mathcal{L}_1, T_1))$ and $\mathcal{A}_2 = \mathcal{A}(\Sigma(S_2, M_2, \mathcal{L}_2, T_2))$ where the surface (S_1, M_1) is the disk with 6 marked points on the boundary with $\mathcal{L}_1 = \emptyset$ and the surface (S_2, M_2) is the disk with 3 marked points on the boundary and 1 puncture with $\mathcal{L}_2 = \emptyset$, see Figure 7. The corresponding quivers, denote $Q_i = Q(T_i)$ for $i = 1, 2$, are both of type A_3 . Thus, $\mathcal{A}_1 = \mathcal{A}(Q_1) \cong \mathcal{A}_2 = \mathcal{A}(Q_2)$ as rooted cluster algebras. But, Q_1 and Q_2 are mutation equivalent. So, there is a triangulation T'_2 of (S_2, M_2) such that its corresponding quiver $Q(T'_2)$ equals to Q_1 , i.e. $Q(T_1) = Q(T'_2)$. However, $(S_1, M_1, \emptyset, T_1) \not\cong (S_2, M_2, \emptyset, T'_2)$ as surfaces with punctures due to $|M_1| \neq |M_2|$.

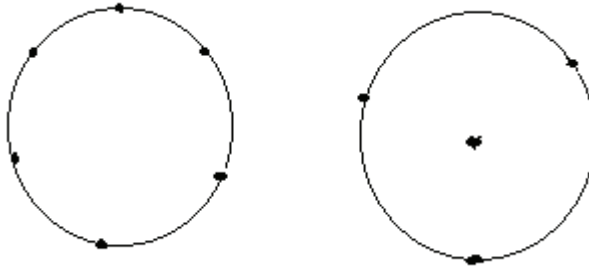


Figure 7

Remark 6.7. *In the case of surfaces with punctures, we refer the readers to [15] for the analogue discussion of Lemma 6.6.*

From this lemma and combining Theorem 1.3 and 6.5, we can give the proof of Theorem 1.4 as follows.

Proof of Theorem 1.4:

(a) It is enough to prove two (I_0, I_1) -pauched surfaces of (S, M, T, \mathcal{L}) are isomorphic if and only if their corresponding rooted (I_0, I_1) sub-cluster algebras of $\mathcal{A}(\Sigma(S, M, T, \mathcal{L}))$ are isomorphic.

First, as (I_0, I_1) -pauched surfaces from (S, M, T, \mathcal{L}) , we may assume $(S_J, M, T_J, \mathcal{L}_1) \stackrel{\mathcal{L}}{\cong} (S_{J'}, M, T_{J'}, \mathcal{L}_2)$, where $J = (I_0 \cup I_1) \cap X$, $J' = (I'_0 \cup I'_1) \cap X$ and $\mathcal{L}_1 = (\mathcal{L} \setminus I_1)^J \cup \{L_x | x \in J\}$, $\mathcal{L}_2 = (\mathcal{L} \setminus I'_1)^{J'} \cup \{L_x | x \in J'\}$. Without loss of generality, assume that the surfaces S_J and $S_{J'}$ are connected respectively, then the quivers $Q(T_J)$ and $Q(T_{J'})$ are connected respectively, too.

Under the bijection $\varphi|_{T_1} : T_1 \rightarrow T_2$, when φ preserves the orientation of the surfaces, we have $Q(T_J) \cong Q(T_{J'})$; when φ inverts the orientation of the surfaces, we have $Q(T_J) \cong Q(T_{J'})^{op}$. And under the bijection $\varphi|_{\mathcal{L}_1} : \mathcal{L}_1 \rightarrow \mathcal{L}_2$, we obtain a one-by-one correspondence from the intersections of laminations in \mathcal{L}_1 with arcs in T_1 to the intersections of laminations in \mathcal{L}_2 with arcs in T_2 . Thus, according to the definition, we have $b_{\gamma L} = b'_{\varphi(\gamma)\varphi(L)}$ if φ preserves the orientation, and $b_{\gamma L} = -b'_{\varphi(\gamma)\varphi(L)}$ if φ inverts the orientation. In both cases of φ , we get $\Sigma(S_J, M, T_J, \mathcal{L}_1) \stackrel{\cong}{\cong} \Sigma(S_{J'}, M, T_{J'}, \mathcal{L}_2)$ by Definition 17, it follows $\mathcal{A}(\Sigma(S, M, T, \mathcal{L}))_{I_0, I_1} \cong \mathcal{A}(\Sigma(S, M, T, \mathcal{L}))_{I'_0, I'_1}$.

Conversely, if $\mathcal{A}(\Sigma(S, M, T, \mathcal{L}))_{I_0, I_1} \cong \mathcal{A}(\Sigma(S, M, T, \mathcal{L}))_{I'_0, I'_1}$, then by Proposition 3.16 and Theorem 6.5, we have

$$(17) \quad \Sigma(S_J, M, T_J, \mathcal{L}_1) \cong \Sigma(S_{J'}, M, T_{J'}, \mathcal{L}_2),$$

where $J = (I_0 \cup I_1) \cap X$, $J' = (I'_0 \cup I'_1) \cap X$ and

$$\mathcal{L}_1 = (\mathcal{L} \setminus I_1)^J \cup \{L_x | x \in J\} \quad \text{and} \quad \mathcal{L}_2 = (\mathcal{L} \setminus I'_1)^{J'} \cup \{L_x | x \in J'\}.$$

We may assume that the seeds in (17) are connected. Then it is obtained that $Q(T_J) \cong Q(T_{J'})$ or $Q(T_J) \cong Q(T_{J'})^{op}$, and the numbers of their frozen variables are equal, which means a bijection between \mathcal{L}_1 and \mathcal{L}_2 . Since there is no puncture in (S, M) , there are no punctures in (S_J, M) and $(S_{J'}, M)$. Hence we see that the conditions of Lemma 6.6 are satisfied for the seeds $\Sigma(S_J, M, T_J, \mathcal{L}_1)$ and $\Sigma(S_{J'}, M, T_{J'}, \mathcal{L}_2)$. Thus, $(S_J, M, T_J, \mathcal{L}_1) \cong (S_{J'}, M, T_{J'}, \mathcal{L}_2)$.

(b) It follows immediately from Theorem 1.3 and (a). □

With the assumption as in Theorem 1.4, but the number of punctures in (S, M, T, \mathcal{L}) is non-zero, one can discuss the analogue version of Theorem 1.4.

Acknowledgements: This project was supported by the National Natural Science Foundation of China (No. 11671350 and No.11571173) and the Zhejiang Provincial Natural Science Foundation of China (No.LZ13A010001).

The authors warmly thank the referee for many helpful comments and suggestions in improving the quality and readability of this paper.

References

- [1] I. Assem, G. Dupont, R. Schiffler, On a category of cluster algebras. *J.Pure Appl.Alg.*218(3),553-582,2014.
- [2] A. Berenstein, S. Fomin and A. Zelevinsky, Cluster Algebras III: Upper Bounds and Double Bruhat Cells, *Duke Math J.* Vol.126, Number 1 (2005), 1-52.
- [3] E. Brugalle and K. Shaw, A bit of tropical geometry. *The American Mathematical Monthly*, 121(7):pp. 563C589, 2014.
- [4] A. Buan, R. Marsh, M. Reineke, I. Reiten, G. Todorov, Tilting theory and cluster combinatorics, *Adv. Math.* 204 (2) (2006) 572C618. MR2249625 (2007f:16033).
- [5] P. Caldero and B. Keller, From triangulated categories to cluster algebras, *Invent. Math.* **Vol.172**(2008) 169-211.
- [6] W. Chang and B. Zhu, On rooted cluster morphisms and cluster structures in 2-Calabi-Yau triangulated categories, arxiv:1410.5702.
- [7] S. Fomin, Total positivity and cluster algebras. (English summary) *Proceedings of the International Congress of Mathematicians. Volume II*, 125-145, Hindustan Book Agency, New Delhi, 2010.
- [8] S. Fomin, M. Shapiro, D. Thurston, Cluster algebras and triangulated surfaces, I: Cluster complexes. *Acta Math.* 201, 83-146(2008).
- [9] S. Fomin, D. Thurston, Cluster algebras and triangulated surfaces, II: Lambda lengths. arxiv:1210.5569v1.
- [10] S. Fomin, A. Zelevinsky, Cluster algebras I: Foundations. *J. Amer. Math. Soc.* 15, 497-529(2002).
- [11] S. Fomin, A. Zelevinsky, Cluster algebras II: Finite type classification. *Inven. Math.* 154, 63-121(2003).
- [12] S. Fomin, A. Zelevinsky, Cluster algebras IV: Coefficients. *Compositio Mathematica*, 143(1): 112-164, 2007.
- [13] G. Christof, B. Leclerc, and J. Schroer, Rigid modules over pre-projective algebras, *Inventions Math.* 165 (2006), 589-632.

- [14] M. Gekhtman, M. Shapiro, and A. Vainshtein, Cluster Algebras and Poisson Geometry. Math. Surveys and Monographs Vol.167, Amer. Math. Soc., Providence, Rhode Island (2010).
- [15] W. Gu, Graphs with non-unique decomposition and their associated surfaces, arXiv:1112.1008.
- [16] P. Hell, and J. Nešetřil, Graphs and Homomorphisms, Oxford Univ. Press Inc., New York, 2004.
- [17] J.M. Howie, An Introduction to Semigroup Theory, Academic Press, London, 1976.
- [18] M. Huang, F. Li, Y.C. Yang, On Structure of cluster algebras of geometric type, I: In view of sub-seeds and seed homomorphisms, preprint.
- [19] B. Keller, Cluster algebras, quiver representations and triangulated categories. math.RT, arXiv: 0807.1960.
- [20] S.J. Kang, M. Kashiwara, M. Kim, S.J. Oh, Monoidal categorification of cluster algebras. math.RT, arxiv:1412.8106v.
- [21] F. Li, J.C. Liu, Y.C. Yang, Genuses of cluster quivers of finite mutation type, Pacific Journal of Mathematics, 269(1): 133-148 (2014).
- [22] F. Li, J.C. Liu, Y.C. Yang: Non-planar cluster quivers from surface, Annals of Combinatorics, 18 (2014) 675C707.
- [23] R. Marsh and Y. Palu, Coloured quivers for rigid objects and partial triangulations: the unpunctured case, Proc. Lond. Math. Soc. (3) 108 (2014), no. 2, 411C440.
- [24] G. Muller, $A = U$ for Locally acyclic Cluster algebras, Symmetry, Integrability and Geometry: Methods and Applications 10 (2014), 094.
- [25] Y. Qiu and Y. Zhou, Cluster categories for marked surfaces: punctured case, arXiv:1311.0010.
- [26] I. Salch, Exchange maps of cluster algebras. International Electronic J. of Algebra 16, 1-15 (2014).
- [27] R. Schiffler, Cluster algebras and cluster categories. Lecture notes for the XVIII Latin American Algebra Colloquium, San Pedro Brazil, 2009.

Min Huang
Department of Mathematics,
Zhejiang University (Yuquan Campus),
Hangzhou, Zhejiang 310027,
P.R.China
E-mail: minhuang1989@hotmail.com

Fang Li
Department of Mathematics,
Zhejiang University (Yuquan Campus),
Hangzhou, Zhejiang 310027,
P.R.China
E-mail: fangli@zju.edu.cn