

Nonlinear Stability of Rotating Patterns

Wolf-Jürgen Beyn and Jens Lorenz

Communicated by Yannis Kevrekidis, received August 21, 2008.

ABSTRACT. We consider 2D localized rotating patterns which solve a parabolic system of PDEs on the spatial domain \mathbb{R}^2 . Under suitable assumptions, we prove nonlinear stability with asymptotic phase with respect to the norm in the Sobolev space H^2 . The stability result is obtained by a combination of energy and resolvent estimates, after the dynamics is decomposed into an evolution within a three-dimensional group orbit and a transversal evolution towards the group orbit.

The stability theorem is applied to the quintic-cubic Ginzburg-Landau equation and illustrated by numerical computations.

CONTENTS

1. Introduction and Main Result	349
2. Decomposition of the Dynamics	358
3. Resolvent Estimates for \mathcal{L}_∞	364
4. Fredholm Theory	371
5. Estimates for $e^{t\mathcal{L}_\infty}$ and $e^{t\mathcal{L}}$	373
6. Proof of Nonlinear Stability	376
7. Existence and Estimate of $D_\phi u$	385
8. The Quintic-Cubic Ginzburg-Landau Equation	387
Appendix A. Perturbation Theorem for C_0 -Semigroups	395
References	399

1. Introduction and Main Result

1.1. Rotating Patterns. Consider a system of reaction-diffusion equations for a vector function $U(x, t)$,

1991 *Mathematics Subject Classification.* 35B35, 35B40, 35K57.

Key words and phrases. Rotating patterns, asymptotic stability, nonlinear stability, relative equilibria, group action, Ginzburg-Landau equation.

Supported by SFB 701 'Spectral Structures and Topological Methods in Mathematics', Bielefeld University.

$$(1.1) \quad U_t = A\Delta U + f(U), \quad x \in \mathbb{R}^2, \quad U(x, t) \in \mathbb{R}^m,$$

where $A \in \mathbb{R}^{m \times m}$ is a positive definite matrix¹ and $f : \mathbb{R}^m \rightarrow \mathbb{R}^m, f \in C^4$, is a smooth nonlinearity. We set

$$R_\theta = \begin{pmatrix} \cos \theta & -\sin \theta \\ \sin \theta & \cos \theta \end{pmatrix}, \quad J = R_{\pi/2} = \begin{pmatrix} 0 & -1 \\ 1 & 0 \end{pmatrix},$$

and assume a solution $U_*(x, t)$ of (1.1) of the form

$$(1.2) \quad U_*(x, t) = u_*(R_{-ct}x)$$

where $c \in \mathbb{R}, c \neq 0$, and $u_* : \mathbb{R}^2 \rightarrow \mathbb{R}^m$ is a smooth function. Writing (1.2) in polar coordinates,

$$(1.3) \quad U_*^{pol}(r, \phi, t) = u_*^{pol}(r, \phi - ct),$$

we see that the solution $U_*(x, t) = U_*^{pol}(r, \phi, t)$ given in (1.2) describes a pattern that rotates with angular velocity c about the origin, $x = 0$.

The aim of this paper is to give conditions for the pattern $u_*(x)$ and the linearization of equation (1.1) about $u_*(x)$ which guarantee nonlinear stability with asymptotic phase of the rotating pattern under small initial perturbations. A precise stability statement is formulated in Theorem 1.1 below. In Section 8 we apply the stability theorem to the cubic–quintic Ginzburg–Landau equation.

An essential assumption is that the pattern $u_*(x)$ is localized in the following sense:

Assumption 1: For some constant vector $u_\infty \in \mathbb{R}^m$ we have ²

$$(1.4) \quad \sup_{|x| \geq R} |u_*(x) - u_\infty| \rightarrow 0 \quad \text{as } R \rightarrow \infty,$$

$$(1.5) \quad \sup_{|x| \geq R} |D^\alpha u_*(x)| \rightarrow 0 \quad \text{as } R \rightarrow \infty \quad \text{for } 1 \leq |\alpha| \leq 2,$$

$$(1.6) \quad u_* - u_\infty \in H^2(\mathbb{R}, \mathbb{R}^m).$$

Remark 1: A class of patterns that are not localized in the above sense are Archimedean spirals. These satisfy $|u_*^{pol}(r, \phi) - u_\infty(\kappa r + \phi)| \rightarrow 0$ as $r \rightarrow \infty$ where $u_\infty(\xi)$ is a non-constant 2π -periodic function. Spectral stability and instability of Archimedean spirals is discussed in [17]. An extension of the nonlinear stability results of the present paper to Archimedean spirals is non-trivial, however, and will be the subject of future work.

The following assumption greatly facilitates our stability proof:

Assumption 2: Let $u_\infty \in \mathbb{R}^m$ denote the constant asymptotic state of the pattern introduced in Assumption 1. Then the matrix $B_\infty := f'(u_\infty)$ is negative definite:

¹The Euclidean inner-product on \mathbb{C}^m and \mathbb{R}^m is denoted by $\langle u, v \rangle = \sum \bar{u}_j v_j$ with corresponding norm $|u| = \langle u, u \rangle^{1/2}$. The matrix $A \in \mathbb{R}^{m \times m}$ is assumed to satisfy $\langle u, \frac{1}{2}(A + A^T)u \rangle \geq 2\beta_A |u|^2$ for all $u \in \mathbb{R}^m$ where $\beta_A > 0$. We then write $A \geq 2\beta_A I > 0$.

²With D^α we denote a partial derivative of order $|\alpha|$. For the Sobolev spaces used see Section 2.1.

$$B_\infty \leq -2\beta I < 0 .$$

Henceforth we will assume $u_\infty = 0$ for convenience and without loss of generality.

Let us transform equation (1.1) to a co-rotating frame: The function $U(x, t) = u(R_{-ct}x, t)$ solves (1.1) if and only if $u(x, t)$ solves

$$(1.7) \quad u_t = A\Delta u + cD_\phi u + f(u)$$

with

$$D_\phi = -x_2 D_1 + x_1 D_2, \quad D_j = \partial / \partial x_j .$$

The function $u_*(x)$ determining the rotating pattern (1.2) is a time-independent solution of (1.7), i.e., if we define

$$(1.8) \quad \mathcal{L}_0 u = A\Delta u + cD_\phi u$$

then $\mathcal{L}_0 u_* + f(u_*) = 0$. In other words, u_* is an equilibrium for equation (1.7).

A fundamental and well-recognized difficulty of any stability result of an equilibrium u_* is that u_* is *not an isolated equilibrium*. Besides u_* , any function $u(x) = u_*(R_{-\theta}x)$ also satisfies

$$(1.9) \quad A\Delta u + cD_\phi u + f(u) = 0 .$$

It is more important, however, that any solution u_* of (1.9) gives rise to a *three parameter family* of solutions $U(x, t)$ of (1.1): If $\eta \in \mathbb{R}^2$ and $\theta \in \mathbb{R}$ are arbitrary, then

$$(1.10) \quad U(x, t) = u_*(R_{-ct-\theta}(x - \eta))$$

solves (1.1), representing a pattern obtained from $U_*(x, t) = u_*(R_{-ct}x)$ by shifting and rotating the x -coordinates. For fixed t , the spatial patterns $x \rightarrow U(x, t)$ in (1.10) form the three dimensional group orbit of u_* ; see Section 1.3. For the perturbed dynamics near $U_*(x, t)$ one must expect different decay behaviour *within* and *towards* the group orbit of u_* , and any stability analysis must take this into account.

We remark that the three-parameter family of patterns $x \rightarrow U(x, t)$ in (1.10) typically do not solve the equilibrium equation (1.9). Nevertheless, under suitable assumptions, the linearization of (1.9) about u_* has a three dimensional invariant subspace corresponding to three eigenvalues on the imaginary axis; these eigenvalues are 0 and $\pm ic$.

1.2. Outline and Discussion. The main result of the paper is the Stability Theorem, Theorem 1.1. To motivate and formulate it, we present some background material on group action in Section 1.3. The presentation is specialized to our application, namely to take the 3-dimensional group orbit of u_* into account. A major step of the stability analysis is, then, to decompose the perturbed solution $u(x, t)$ into two parts: One part evolves within the 3-dimensional group orbit of u_* , the other part in a linear complementary subspace W of codimension 3. Roughly speaking, we show that the evolution in W decays exponentially; this allows us,

a posteriori, to control the dynamics within the group orbit and to prove that it settles to a precise asymptotic form.

To establish exponential decay of the (linearized) dynamics within W turns out to be quite delicate. Our approach to obtain this result may be of some independent interest and is formulated as a theorem on C_0 -semigroups in Section A. The issue is the following: Suppose one has established exponential decay for some C_0 -semigroup,

$$\|e^{tA}\| \leq Ce^{-\beta t}, \quad t \geq 0, \quad \beta > 0,$$

and wants to show exponential decay for a semigroup

$$e^{t(A+B)}$$

where B is a bounded linear operator. Of course, in general, exponential decay for $e^{t(A+B)}$ does not hold. Suppose, however, that

$$\operatorname{Re} \lambda \leq -\beta < 0$$

for all eigenvalues λ of $A+B$. In general, exponential decay of the semigroup $e^{t(A+B)}$ still cannot be concluded since the operator $e^{t(A+B)}, t > 0$, may have continuous spectrum reaching into the right-half plane (see [13] or [12] for an example³ and [8, Ch.IV] for a recent overview of the problem). However, if we add the assumption that the operators

$$Be^{tA}, \quad t > 0,$$

are compact, then exponential decay of $e^{t(A+B)}$ does follow. We will prove this in Appendix A.

Using this abstract result, exponential decay of the linearized dynamics in the complementary space W follows and the Stability Theorem can be proved. We refer to Section 1.7 for a discussion of related techniques in the literature, in particular for proving stability of traveling waves.

1.3. Relative Equilibria and Group Action. We will explain the notions in the context of equation (1.1).

The Euclidean Group $SE(2)$. Let

$$SE(2) = \mathbb{R}^2 \ltimes S^1$$

denote the Euclidean group consisting of all pairs

$$\gamma = (\eta, \theta), \quad \eta \in \mathbb{R}^2, \quad \theta \in S^1,$$

with group operation

$$\begin{aligned} \gamma \circ \tilde{\gamma} &= (\eta, \theta) \circ (\tilde{\eta}, \tilde{\theta}) \\ &= (\eta + R_\theta \tilde{\eta}, \theta + \tilde{\theta}). \end{aligned}$$

Here $S^1 = \mathbb{R}/(2\pi)$ denotes the circle group. The unit element in $SE(2)$ is denoted by $\mathbb{1} = (0, 0)$.

³Theorem 16.7.4 of [12] gives an example of an operator A with a value $\mu \neq 0$ in the continuous spectrum of e^A for which all solutions λ of the equation $e^\lambda = \mu$ lie in the resolvent of A .

Group Action. Let $u : \mathbb{R}^2 \rightarrow \mathbb{R}^m$ denote any function and let $\gamma = (\eta, \theta) \in SE(2)$. One defines the group action by

$$(1.11) \quad (a(\gamma)u)(x) = u(R_{-\theta}(x - \eta)), \quad x \in \mathbb{R}^2, \quad \gamma = (\eta, \theta).$$

Our analysis below will be carried out in the function space

$$H^2_{Eucl} = \{u \in H^2 : D_\phi u \in L^2\}.$$

(For definitions of spaces and norms, see Section 2.1.) It is easy to see that $u \in H^2_{Eucl}$ implies $a(\gamma)u \in H^2_{Eucl}$ and

$$a(\gamma \circ \tilde{\gamma})u = a(\tilde{\gamma})(a(\gamma)u).$$

Let us define the operator $F : H^2_{Eucl} \mapsto L^2$ by $F(u) = A\Delta u + f(u)$. It is well known that F is *equivariant* with respect to the action of the group, i.e.,

$$(1.12) \quad F(a(\gamma)u) = a(\gamma)F(u), \quad \gamma \in SE(2), \quad u \in H^2_{Eucl}.$$

DEFINITION 1.1. A *relative equilibrium of the system (1.1)* is a solution $U_*(x, t)$ of the form

$$(1.13) \quad U_*(x, t) = [a(\gamma(t))u_*](x), \quad x \in \mathbb{R}^2, \quad t \geq 0,$$

where $u_* \in H^2_{Eucl}$ and $\gamma \in C^1([0, \infty), SE(2))$.

By definition, the group orbit of a function $u_* \in H^2_{Eucl}$ consists of all functions $a(\gamma)u_*(\cdot), \gamma \in SE(2)$. Using this terminology, a relative equilibrium of the system (1.1) is a solution $U_*(x, t)$ of (1.1) that moves within the group orbit of some fixed pattern $u_* \in H^2_{Eucl}$.

To ensure that the function (1.13) solves (1.1), the motion $\gamma(t)$ on the group is by no means arbitrary. In fact, it always has the form $\gamma(t) = \exp(gt)$ for some element g in the Lie algebra, but we will not make explicit use of this fact, see [4, Theorem 7.2.4].

In our case, assume that the functions

$$(1.14) \quad \varphi_1 = D_1 u_*, \quad \varphi_2 = D_2 u_*, \quad \varphi_3 = D_\phi u_*$$

are linearly independent. Then one can show that a relative equilibrium (1.13) is either a rotating wave,

$$(1.15) \quad U_*(x, t) = u_*(R_{-ct}(x - x_0) + x_0) \quad \text{for some } c \neq 0, \quad x_0 \in \mathbb{R}^2,$$

or a drifting wave,

$$(1.16) \quad U_*(x, t) = u_*(x - tv_0) \quad \text{for some } v_0 \in \mathbb{R}^2.$$

For the solution (1.15) of (1.1) the point x_0 is the center of rotation. For the original solution $u_*(R_{-ct}x)$ in (1.2), the origin $x = 0$ is the center of rotation. Perturbing the initial data $u_*(x)$ will generally excite rotational as well as translational modes of the solution and, in particular, one must expect the center of rotation to move out of the origin. For further details of the perturbed solution, see Theorem 1.1.

1.4. Eigenvalues of the Linearized Operator \mathcal{L} . Introduce the linear operator

$$(1.17) \quad \mathcal{L}v = A\Delta v + cD_\phi v + B(x)v$$

with

$$B(x) = f'(u_*(x))$$

which is obtained by linearizing the equation

$$(1.18) \quad \mathcal{L}_0 u_* + f(u_*) = 0$$

(with $\mathcal{L}_0 v = A\Delta v + cD_\phi v$) about u_* . We consider \mathcal{L} and \mathcal{L}_0 as operators from H_{Eucl}^2 to L^2 .

Applying D_ϕ to the equation (1.18), one finds that $D_\phi u_*$ is an eigenfunction of \mathcal{L} to the eigenvalue zero. Also, applying D_1 and D_2 to (1.18), one finds that \mathcal{L} has the invariant subspace

$$(1.19) \quad \text{span}\{D_1 u_*, D_2 u_*\}$$

with corresponding eigenvalues $\pm ic$ (see Lemma 2.3).

Remark 2: One can obtain these results also by differentiating the equation

$$(1.20) \quad (A\Delta + cD_\phi)(a(\gamma)u_*) + f(a(\gamma)u_*) = 0 \quad \text{for all } \gamma = (\eta, \theta) \in SE(2)$$

with respect to the group variables θ, η_1 , and η_2 . Here one should note that the group $SE(2)$ is not Abelian. Under the action of an Abelian Lie group with 3 dimensional Lie algebra, one can expect a *zero* eigenvalue of multiplicity at least three. We also note that by differentiating (1.11) w.r.t. η_1, η_2 , and θ and evaluating at $(\eta, \theta) = (0, 0)$ one obtains that the space

$$\Phi := \text{span}\{D_1 u_*, D_2 u_*, D_\phi u_*\}$$

is tangent at u_* to the group orbit of u_* .

Assumption 3: The functions $D_1 u_*, D_2 u_*, D_\phi u_*$ lie in H_{Eucl}^2 , are nontrivial, and the corresponding eigenvalues $\pm ic$ and 0 of $\mathcal{L} : H_{Eucl}^2 \rightarrow L^2$ are algebraically simple.

As we will show, Assumptions 1-2 guarantee that the operator \mathcal{L} from (1.17) has its essential spectrum in the region $\text{Re } s \leq -2\beta$. In fact, we will prove that the operator $\mathcal{L}_\infty v = A\Delta v + cD_\phi v + B_\infty v$ has resolvent for $\text{Re } s \geq -2\beta$; here the assumption $B_\infty \leq -2\beta I < 0$ is crucial. A compact-perturbation argument then shows that the essential spectrum of \mathcal{L} lies in $\text{Re } s \leq -2\beta$.

The existence of eigenvalues s of \mathcal{L} with $\text{Re } s \geq -2\beta$ and $s \notin \{ic, -ic, 0\}$ will be excluded explicitly:

Assumption 4: The operator $\mathcal{L} : H_{Eucl}^2 \rightarrow L^2$ (see (1.17)) has no eigenvalue $s \in \mathbb{C}$ with $\text{Re } s \geq -2\beta$, except for the eigenvalues $s_{1,2} = \pm ic$ and $s_3 = 0$ mentioned in Assumption 3.

1.5. Stability Theorem. Consider the initial value problem

$$(1.21) \quad u_t = A\Delta u + cD_\phi u + f(u) = \mathcal{L}_0 u + f(u), \quad u(x, 0) = u_*(x) + v_0(x)$$

where $v_0 \in H^2_{Eucl}$ is small w.r.t. $\|\cdot\|_{H^2}$. Our main result is the following.

THEOREM 1.1. *Under the Assumptions 1-4 there exist constants $\varepsilon > 0$ and $C > 0$ so that the following holds for $\|v_0\|_{H^2} < \varepsilon$:*

- (1) *the solution $u(x, t)$ of (1.21) exists for all $t \geq 0$;*
- (2) *the solution $u(x, t)$ can be written in the form*

$$(1.22) \quad u(x, t) = u_*\left(R_{-\theta(t)}(x - \eta(t))\right) + w(x, t)$$

where

$$\eta \in C^1([0, \infty), \mathbb{R}^2), \quad \theta \in C^1([0, \infty), S^1),$$

(3)

$$(1.23) \quad \|w(\cdot, t)\|_{H^2} \leq Ce^{-\beta t}\|v_0\|_{H^2};$$

(4)

$$|\eta(0)| + |\theta(0)| \leq C\|v_0\|_{H^2};$$

- (5) *there exist $\eta_\infty \in \mathbb{R}^2, \theta_\infty \in S^1$, depending on v_0 , such that*

$$(1.24) \quad |\eta(t) - R_{-ct}\eta_\infty| + |\theta(t) - \theta_\infty| \leq Ce^{-\beta t}\|v_0\|_{H^2}.$$

Remark 3: The constants η_∞ and θ_∞ specify the so called *asymptotic phase* of the perturbed solution. For the original variable $U(x, t) = u(R_{-ct}x, t)$, solving (1.1), one obtains

$$\begin{aligned} U(x, t) &= u_*(R_{-\theta(t)}(R_{-ct}x - \eta(t))) + w(R_{-ct}x, t) \\ &= a(\gamma(t))u_* + \tilde{w}(x, t). \end{aligned}$$

Here, using the group action (1.11) we define

$$(1.25) \quad \gamma(t) = (\tilde{\eta}(t), \theta(t) + ct), \quad \tilde{\eta}(t) = R_{ct}\eta(t), \quad \tilde{w}(x, t) = w(R_{-ct}x, t).$$

Then the estimates (1.23) and (1.24) can be written as follows:

$$|\tilde{\eta}(t) - \eta_\infty| + |\theta(t) - \theta_\infty| + \|U(\cdot, t) - a(\gamma(t))u_*\|_{H^2} \leq Ce^{-\beta t}\|U(\cdot, 0) - u_*\|_{H^2}.$$

That is, $U(\cdot, t)$ approaches, in H^2 -norm, a pattern $a(\gamma(t))u_*$ similar to the unperturbed pattern $u_*(R_{-ct}x)$, but the perturbed pattern rotates about the center η_∞ and has a phase shift θ_∞ . The angular velocity c is the same for the unperturbed solution $u_*(R_{-ct}x)$ and the asymptotic solution $a(\gamma(t))u_*$. The decay of the error term, $\tilde{w}(\cdot, t)$, to zero and the approach of the group variables $\theta(t)$ and $\tilde{\eta}(t)$ to their limit values θ_∞ and η_∞ is exponential as $t \rightarrow \infty$.

Remark 4: In Theorem 1.1 we have left the notion of a solution imprecise. In fact, to prove the theorem, we will use an integral formulation and a contraction argument w.r.t. $\|\cdot\|_{H^2}$, leading to a mild solution of (1.21). This is a function

$$u \in C^1([0, \infty), L^2) \cap C([0, \infty), H^2)$$

satisfying the integral version of (1.21),

$$(1.26) \quad u(\cdot, t) = e^{t\mathcal{L}_0}(u_* + v_0) + \int_0^t e^{(t-\tau)\mathcal{L}_0} f(u(\cdot, \tau)) d\tau.$$

Because of the simple structure of the nonlinearity, the contraction argument does neither need nor provide any control of $\|D_\phi u(\cdot, t)\|_{L^2}$. However, using the assumption $v_0 \in H^2_{Eucl}$, one can show, a posteriori, that $\|D_\phi u(\cdot, t)\|_{L^2}$ exists and grows at most exponentially in time. In fact, the constructed solution $u(x, t)$ is a classical solution of (1.7) and, for all $t \geq 0$, we have

$$u_t(\cdot, t), \Delta u(\cdot, t), D_\phi u(\cdot, t) \in L^2(\mathbb{R}^2, \mathbb{R}^m) .$$

See Section 7 for details.

Remark 5: We believe that, using Assumption 2, one can show that the equilibrium pattern $u_*(x)$ and the solution $u(x, t)$ of (1.7) decay exponentially as $|x| \rightarrow \infty$. Moreover, we expect that (1.5) can be deduced from (1.4) under Assumption 2. However, we have not carried out detailed arguments.

1.6. Outline of Proof and Functional Analytical Setting. We will use the linear operators

$$(1.27) \quad \mathcal{L}v = A\Delta v + cD_\phi v + B(x)v, \quad B(x) = f'(u_*(x))$$

$$(1.28) \quad \mathcal{L}_0 v = A\Delta v + cD_\phi v$$

$$(1.29) \quad \mathcal{L}_\infty v = A\Delta v + cD_\phi v + B_\infty v, \quad B_\infty = f'(u_\infty) = f'(0)$$

with

$$D_\phi v = -x_2 D_1 v + x_1 D_2 v .$$

We consider $\mathcal{L}, \mathcal{L}_0$, and \mathcal{L}_∞ as operators from H^2_{Eucl} into L^2 . Since the operator D_ϕ has unbounded coefficients, some of the results derived below do not seem to follow directly from standard theorems.

In Section 3 we consider the resolvent equation

$$\mathcal{L}_\infty v - sv = h, \quad h \in L^2, \quad \text{Re } s \geq -\beta ,$$

and construct a solution $v \in H^2_{Eucl}$. For $\text{Re } s \geq -\beta$ we also show the resolvent estimates

$$\begin{aligned} \|(\mathcal{L}_\infty - s)^{-1}h\|_{H^2_{Eucl}}^2 &\leq C(1 + |\text{Im } s|^2) \|h\|_{L^2}^2, \\ \|(\mathcal{L}_\infty - s)^{-1}h\|_{L^2} &\leq \frac{1}{2\beta + \text{Re } s} \|h\|_{L^2}. \end{aligned}$$

These imply that $\mathcal{L}_\infty : H^2_{Eucl} \subset L^2 \rightarrow L^2$ is a closed operator. Since H^2_{Eucl} is dense in L^2 one obtains existence of the C_0 -semigroup $e^{t\mathcal{L}_\infty} : L^2 \rightarrow L^2$ and for the generator the domain of definition

$$D(\mathcal{L}_\infty) = H^2_{Eucl} .$$

The operator

$$\mathcal{L}v = \mathcal{L}_\infty v + (B(x) - B_\infty)v$$

differs from \mathcal{L}_∞ by a term which is a bounded operator from L^2 into L^2 . One obtains the semigroup $e^{t\mathcal{L}} : L^2 \rightarrow L^2$. More generally, we show that the same results hold for Sobolev spaces $H^n, n \geq 1$, with H^n, H^{n+2}_{Eucl} replacing L^2, H^2_{Eucl} .

Using the energy technique, we will show exponential decay estimates for the semigroup $e^{t\mathcal{L}}$ in H^2 in Section 5. A main difficulty is to extend these decay estimates for $e^{t\mathcal{L}}$ partially to the semigroup $e^{t\mathcal{L}}$: The purely imaginary eigenvalues $\pm ic$ and 0 of \mathcal{L} must be taken into account. To do this we decompose the space H^2 as

$$(1.30) \quad H^2 = \Phi \oplus (H^2 \cap \Psi^\perp)$$

where Φ is the 3-dimensional space (1.19), corresponding to the eigenvalues $\pm ic$ and 0 of \mathcal{L} , and Ψ is the corresponding space for \mathcal{L}^* . Here the adjoint \mathcal{L}^* and the orthogonal complement Ψ^\perp are taken w.r.t. the L^2 inner product. In Section 4 we justify the application of Fredholm theory.

In (1.30) the space H^2 is decomposed into invariant subspaces for \mathcal{L} and we show the decay estimate

$$(1.31) \quad \|e^{t\mathcal{L}}w_0\|_{H^2} \leq Ce^{-\beta t}\|w_0\|_{H^2}, \quad w_0 \in H^2 \cap \Psi^\perp,$$

in Section 5. A corresponding estimate holds for $\|\cdot\|_{H^2_{E_{ucl}}}$ but we will not use this.

Using the projector P from L^2 onto Ψ^\perp along Φ and an implicit-function argument, we decompose the solution $u(x, t)$ in the form (1.22) and derive (coupled) evolution equations for the group variable $\gamma(t) = (\eta(t), \theta(t))$ and the error term $w(x, t)$. The evolution equations take the form

$$(1.32) \quad \dot{\gamma} - E_c\gamma = r^{[\gamma]}(\gamma(t), w(\cdot, t))$$

$$(1.33) \quad w_t - \mathcal{L}w = r^{[w]}(\gamma(t), w(\cdot, t))$$

with coupling terms $r^{[\gamma]}$ and $r^{[w]}$; see Section 2 for details. Here the error term $w(x, t)$ evolves in the space $H^2 \cap \Psi^\perp$, and the decay estimate (1.31) can be used for the inhomogeneous equation (1.33).

Using an integral formulation of (1.33) (see (6.4)) and careful estimates of the coupling terms $r^{[\gamma]}$ and $r^{[w]}$, a contraction argument is then used to prove Theorem 1.1. The details are provided in Section 6.

1.7. Remarks on the literature. Structurally, our approach for splitting the dynamics as in (1.32), (1.33) follows Henry’s method [11, Ch.5] for proving stability of traveling waves with asymptotic phase. A few generalizations and variations of this technique have been developed since, and we refer to [18] for a recent survey. Most results use analyticity of the semigroup and prove exponential decay by using the integral representation of the semigroup and resolvent estimates. As noted above, this approach does not apply when the linearized operator generates only a C^0 -semigroup. For this case Bates and Jones [2] set up an invariant manifold theory allowing to decompose the dynamics near a traveling wave into a center manifold (formed by the translates of the wave) and a stable manifold. Exponential decay of the semigroup is obtained in a similar but somewhat more involved way by comparing with a constant coefficient semigroup, see the application to the FitzHugh Nagumo system in [2, Sect.4]. A general abstract principle that allows to reduce the dynamics near a relative equilibrium to a center manifold is derived in [16]. Moreover, using the arguments from [2] the authors prove that the center

manifold is exponentially attracting for rotating waves satisfying our assumptions. However, stability with asymptotic phase is not discussed in [16].

Finally, during revision of the manuscript we learnt of the recent work [9] which uses compact perturbation techniques for C^0 -semigroups (see Appendix) for proving nonlinear stability of traveling waves for some combustion problems.

Acknowledgement: The authors are particularly grateful to Vera Thümmeler for her excellent numerical work on the Ginzburg-Landau equations in Section 8. Not only did her results illustrate the theory at an intermediate stage, they also stimulated completion of the spectral investigations.

2. Decomposition of the Dynamics

In this section, the solution $u(x, t)$ of (1.7) with initial condition $u(x, 0) = u_*(x) + v_0(x)$ will be decomposed as

$$u(x, t) = u_*(R_{-\theta(t)}(x - \eta(t))) + w(x, t), \quad w(\cdot, t) \in H^2 \cap \Psi^\perp,$$

where $w(x, t)$ will be shown to decay exponentially.

2.1. Spaces and Norms. On $L^2 = L^2(\mathbb{R}^2, \mathbb{C}^m)$ we define the inner product

$$(u, v)_{L^2} = \int_{\mathbb{R}^2} \langle u(x), v(x) \rangle dx$$

with

$$\langle u, v \rangle = \sum_j \bar{u}_j v_j .$$

For brevity we often write $(u, v) = (u, v)_{L^2}$. On the Sobolev space $H^n(\mathbb{R}^2, \mathbb{C}^m)$ we have a semidefinite and a definite inner product:

$$\begin{aligned} (u, v)_{H^n} &= \sum_{|\alpha|=n} \frac{n!}{\alpha!} (D^\alpha u, D^\alpha v)_{L^2} \\ (2.1) \qquad &= \sum_{i_1, \dots, i_n=1}^2 (D_{i_1} \cdots D_{i_n} u, D_{i_1} \cdots D_{i_n} v)_{L^2} \end{aligned}$$

$$\begin{aligned} ((u, v))_{H^n} &= \sum_{|\alpha| \leq n} \frac{|\alpha|!}{\alpha!} (D^\alpha u, D^\alpha v)_{L^2} \\ (2.2) \qquad &= \sum_{k=0}^n (u, v)_{H^k} \end{aligned}$$

with corresponding (semi) norms

$$|u|_{H^n}^2 = (u, u)_{H^n} \quad \text{and} \quad \|u\|_{H^n}^2 = ((u, u))_{H^n} .$$

A simple calculation shows that the inner products are invariant under orthogonal transformations of the independent variable, i.e., $(u, v)_{H^n} = (u \circ Q, v \circ Q)_{H^n}$ if $Q^T Q = I$. Thus we have for all $\gamma \in SE(2)$ and all $u, v \in H^n$:

$$(2.3) \qquad (a(\gamma)u, a(\gamma)v)_{H^n} = (u, v)_{H^n}, \quad |a(\gamma)u|_{H^n} = |u|_{H^n},$$

$$(2.4) \qquad ((a(\gamma)u, a(\gamma)v))_{H^n} = ((u, v))_{H^n}, \quad \|a(\gamma)u\|_{H^n} = \|u\|_{H^n} .$$

Finally, for $n \geq 2$ we introduce the space

$$H_{Eucl}^n = \{u \in H^n : D_\phi u \in H^{n-2}\}$$

which is a Hilbert subspace of H^n with inner product

$$(u, v)_{H_{Eucl}^n} = ((u, v))_{H^n} + ((D_\phi u, D_\phi v))_{H^{n-2}}.$$

The following lemma generalizes the rule

$$(2.5) \quad (u, D_\phi u) = 0.$$

LEMMA 2.1. *For $n \in \mathbb{N}$ we have*

$$(2.6) \quad \sum_{|\alpha|=n} \frac{n!}{\alpha!} (D^\alpha u, D^\alpha D_\phi u) = (u, D_\phi u)_{H^n} = 0$$

if $u, D_\phi u \in H^n(\mathbb{R}, \mathbb{R}^m)$.

PROOF. From

$$D_\phi u = -x_2 D_1 u + x_1 D_2 u$$

we have

$$D_1 D_\phi = D_\phi D_1 + D_2$$

and, by induction,

$$(2.7) \quad D_1^k D_\phi = D_\phi D_1^k + k D_1^{k-1} D_2.$$

Similarly,

$$(2.8) \quad D_2^l D_\phi = D_\phi D_2^l - l D_1 D_2^{l-1}.$$

Combining these equations we have

$$(2.9) \quad D_1^k D_2^l D_\phi = D_\phi D_1^k D_2^l + k D_1^{k-1} D_2^{l+1} - l D_1^{k+1} D_2^{l-1}.$$

From (2.5) and (2.9) we obtain

$$\begin{aligned} \sum_{|\alpha|=n} \frac{n!}{\alpha!} (D^\alpha u, D^\alpha D_\phi u) &= \sum_{j=0}^n \binom{n}{j} (D_1^j D_2^{n-j} u, D_1^j D_2^{n-j} D_\phi u) = \\ & \sum_{j=1}^n j \binom{n}{j} (D_1^j D_2^{n-j} u, D_1^{j-1} D_2^{n-j+1} u) - \\ & \sum_{j=0}^{n-1} (n-j) \binom{n}{j} (D_1^j D_2^{n-j} u, D_1^{j+1} D_2^{n-j-1} u). \end{aligned}$$

Shifting the index in the second sum we end up with

$$\sum_{j=1}^n \left(j \binom{n}{j} - (n-j+1) \binom{n}{j-1} \right) (D_1^j D_2^{n-j} u, D_1^{j-1} D_2^{n-j+1} u) = 0.$$

□

LEMMA 2.2. *Let $u, D_\phi u \in H^n(\mathbb{R}^2, \mathbb{C}^m)$. Then we have*

$$(2.10) \quad \sum_{|\alpha|=n} \frac{n!}{\alpha!} \operatorname{Re}(D^\alpha u, D^\alpha D_\phi u) = \operatorname{Re}(u, D_\phi u)_{H^n} = 0 .$$

PROOF. This follows from the previous lemma since we can write $u = u_1 + iu_2$ with $u_j \in H^n(\mathbb{R}^2, \mathbb{R}^m)$ and obtain

$$(u, D_\phi u)_{H^n} = (u_1, D_\phi u_1)_{H^n} + (u_2, D_\phi u_2)_{H^n} - i(u_2, D_\phi u_1)_{H^n} + i(u_1, D_\phi u_2)_{H^n} .$$

□

2.2. The Eigenvalues 0 and $\pm ic$ of \mathcal{L} . Recall that $U_*(x, t) = u_*(R_{-ct}x)$ denotes a solution of (1.1), thus $u_*(x)$ is a stationary solution of (1.7). The operator obtained by linearizing the stationary equation (1.7) about u_* is

$$(2.11) \quad \mathcal{L}v = A\Delta v + cD_\phi v + B(x)v, \quad B(x) = Df(u_*(x)).$$

LEMMA 2.3. *Let $U_*(x, t) = u_*(R_{-ct}x)$ denote a rotating pattern solving (1.1) with $u_* \in H_{Eucl}^2$, $c \neq 0$, and nontrivial functions $\varphi_1 = D_1 u_*$, $\varphi_2 = D_2 u_*$, $\varphi_3 = D_\phi u_* \in H_{Eucl}^2$. Then $\pm ic$ are eigenvalues of \mathcal{L} with eigenfunctions $\varphi_1 \pm i\varphi_2$, and 0 is an eigenvalue of \mathcal{L} with eigenfunction φ_3 .*

PROOF. Applying D_1 and D_2 to the stationary equation (1.18) leads to

$$0 = \mathcal{L}(D_1 u_*) + cD_2 u_*, \quad 0 = \mathcal{L}(D_2 u_*) - cD_1 u_*,$$

from which the first assertion follows. Similarly, we apply D_ϕ to (1.18) and, using $D_\phi \Delta = \Delta D_\phi$, obtain the second assertion. □

By Assumption 1 we have $u_*(x) \rightarrow u_\infty = 0$ as $|x| \rightarrow \infty$; therefore, the linear operator

$$(2.12) \quad \mathcal{L}_\infty v = A\Delta v + cD_\phi v + B_\infty v, \quad B_\infty = f'(u_\infty) = f'(0) ,$$

also plays a role in our analysis. We consider $\mathcal{L}_0, \mathcal{L}$, and \mathcal{L}_∞ as linear operators defined on H_{Eucl}^2 taking values in L^2 .

The formal adjoint of \mathcal{L} is defined by

$$(2.13) \quad \mathcal{L}^* u = \Delta u - cD_\phi u + B(\cdot)^T u, \quad \mathcal{L}^* : H_{Eucl}^2 \rightarrow L^2 ,$$

and satisfies

$$(2.14) \quad (\mathcal{L}u, v)_{L^2} = (u, \mathcal{L}^* v)_{L^2} \quad \text{for all } u, v \in H_{Eucl}^2 .$$

(We will see below that the formal adjoint \mathcal{L}^* does, in fact, agree with the abstract adjoint of \mathcal{L} as defined, for example, in [19].)

The following lemma summarizes important properties of the operator \mathcal{L} .

LEMMA 2.4. *For all complex s with $\operatorname{Re} s > -2\beta$ the operator*

$$\mathcal{L}_\infty - s : (H_{Eucl}^2, \|\cdot\|_{H_{Eucl}^2}) \rightarrow (L^2, \|\cdot\|_{L^2})$$

is a linear homeomorphism and the operator

$$\mathcal{L} - s : (H_{Eucl}^2, \|\cdot\|_{H_{Eucl}^2}) \rightarrow (L^2, \|\cdot\|_{L^2})$$

is Fredholm of index 0. Moreover, there exist adjoint eigenfunctions $\psi_1, \psi_2, \psi_3 \in H_{Eucl}^2(\mathbb{R}^2, \mathbb{R}^m)$ with

$$(2.15) \quad \begin{aligned} \mathcal{L}^*(\psi_1 \pm i\psi_2) &= \mp ic(\psi_1 \pm i\psi_2), \\ \mathcal{L}^*\psi_3 &= 0. \end{aligned}$$

For $s_1 = ic, s_2 = -ic, s_3 = 0$ the inhomogeneous equation

$$(2.16) \quad (\mathcal{L} - s_j)u = h, \quad h \in L^2, \quad j = 1, 2, 3,$$

has a solution $u \in H_{Eucl}^2$ if and only if

$$\begin{aligned} (\psi_1 + i\psi_2, h)_{L^2} &= 0, \quad j = 1, \\ (\psi_1 - i\psi_2, h)_{L^2} &= 0, \quad j = 2, \\ (\psi_3, h)_{L^2} &= 0, \quad j = 3. \end{aligned}$$

If the orthogonality condition is satisfied, then one can select a solution u of (2.16) with

$$\|u\|_{H^2} \leq C\|h\|_{L^2}$$

where C does not depend on $h \in L^2$.

PROOF. Resolvent estimates for \mathcal{L}_∞ are shown in Section 3. Based on these, the Fredholm property of $\mathcal{L} - s$ follows essentially from the Riesz–Fréchet–Kolmogorov compactness criterion; see Section 4 for details. \square

Lemma 2.4 is written in spaces of complex valued functions. Since we have real differential operators we can express the same results in terms of real-valued functions. If necessary we write the corresponding real function spaces as $L_{\mathbb{R}}^2, H_{\mathbb{R}}^2, H_{\mathbb{R}, Eucl}^2$.

Lemma 2.4 can be used to decompose the spaces $L_{\mathbb{R}}^2, H_{\mathbb{R}}^2$ and $H_{\mathbb{R}, Eucl}^2$ as follows. First, define

$$(2.17) \quad \Phi = \text{span}\{\varphi_1, \varphi_2, \varphi_3\}, \quad \Psi = \text{span}\{\psi_1, \psi_2, \psi_3\}, \quad W = \Psi^\perp,$$

where the orthogonal complement of Ψ is taken in $L_{\mathbb{R}}^2$. Then, for $n \geq 2$, introduce the subspaces

$$(2.18) \quad W^n = H^n \cap W, \quad W_{Eucl}^n = H_{Eucl}^n \cap W.$$

With these settings we have

$$(2.19) \quad L_{\mathbb{R}}^2 = \Phi \oplus W \quad \text{and} \quad H_{\mathbb{R}}^2 = \Phi \oplus W^2, \quad H_{\mathbb{R}, Eucl}^2 = \Phi \oplus W_{Eucl}^2.$$

The decompositions (2.19) are compatible with the operator $\mathcal{L} : H_{Eucl}^2 \rightarrow L^2$ in the sense that

$$(2.20) \quad \mathcal{L}(\Phi) \subset \Phi \quad \text{and} \quad \mathcal{L}(W_{Eucl}^2) \subset W.$$

We can carry this argument further to show that

$$(2.21) \quad H_{\mathbb{R}, Eucl}^4 = \Phi \oplus W_{Eucl}^4 \quad \text{and} \quad \mathcal{L}(W_{Eucl}^4) \subset W^2.$$

Note that $\Phi \subset H_{\mathbb{R}, Eucl}^4$ follows by Theorem 3.2 from

$$\mathcal{L}_\infty \varphi_j = s_j \varphi_j + (B_\infty - B(\cdot))\varphi_j \quad j = 1, 2, 3$$

and Assumptions 1 and 3.

Using the simplicity of the eigenvalues $\pm ic$ we have $(\psi_1 + i\psi_2, \varphi_1 + i\varphi_2)_{L^2} \neq 0$ and, therefore, may assume $(\psi_1 + i\psi_2, \varphi_1 + i\varphi_2)_{L^2} = 2$. Combined with the orthogonality of left and right eigenfunctions, this implies the normalization

$$(2.22) \quad (\psi_j, \varphi_k)_{L^2} = \delta_{j,k} \quad \text{for } j, k = 1, 2, 3.$$

The projector P from $L^2_{\mathbb{R}}$ onto W along Φ is then given by

$$(2.23) \quad Pu = u - \sum_{j=1}^3 \varphi_j (\psi_j, u)_{L^2}.$$

This projector P also maps $H^n_{\mathbb{R}, Eucl}$ onto W^n_{Eucl} and H^n onto W^n ($n = 2, 4$).

2.3. Decomposition of the Solution $u(x, t)$. Let $u(x, t)$ denote the solution of (1.21), i.e., u solves the differential system (1.7) (with stationary solution $u_*(x)$), but the initial data are perturbed, $u(x, 0) = u_*(x) + v_0(x)$. A major step is to decompose $u(x, t)$ into two parts: One part moves within the group orbit of u_* and the other part, which we call $w(x, t)$, moves within the space $W = \Psi^\perp$:

$$(2.24) \quad \begin{aligned} u(x, t) &= (a(\gamma(t))u_*)(x) + w(x, t) \\ &= u_*(R_{-\theta(t)}(x - \eta(t))) + w(x, t), \end{aligned}$$

where

$$w(\cdot, t) \in W, \quad \gamma(t) = (\eta(t), \theta(t)) \in SE(2).$$

This decomposition follows the approach for traveling waves in [11, Ch.5] and corresponds to a transformation to a local coordinate system. The local coordinate system uses the group variables $\gamma = (\eta, \theta)$ and the subspace $W = \Psi^\perp$ defined above. Note that W is transversal to the space Φ where Φ is the tangent space, at u_* , to the group orbit of u_* (cf. the slice theorem in [4]).

A rigorous formulation of the change of coordinates uses the derivative of the group action

$$a(\cdot)u_* : \begin{cases} SE(2) & \mapsto L^2 \\ \gamma & \mapsto a(\gamma)u_* \end{cases}$$

defined by (1.11). As follows from Assumption 3, this derivative exists and can be evaluated at $\gamma = \mathbb{1} = (0, 0)$ as follows:

$$(2.25) \quad D[a(\mathbb{1})u_*]\mu = \sum_{j=1}^3 \mu_j \varphi_j \quad \text{for } \mu \in \mathbb{R}^3.$$

Here we have identified the Lie algebra $T_{\mathbb{1}}SE(2) = se(2)$ with \mathbb{R}^3 . The following result is then a consequence of the inverse function theorem.

LEMMA 2.5. *Let P denote the projector (2.23). The map*

$$(2.26) \quad \Gamma : \begin{cases} SE(2) & \mapsto \Phi \\ \gamma & \mapsto (I - P)(a(\gamma)u_* - u_*) \end{cases}$$

satisfies $\Gamma(\mathbb{1}) = 0$ and is a local diffeomorphism near $\gamma = \mathbb{1}$ with derivative

$$(2.27) \quad D\Gamma(\mathbb{1})\mu = \sum_{j=1}^3 \mu_j \varphi_j, \quad \mu \in \mathbb{R}^3.$$

Moreover, the transformation

$$(2.28) \quad T : \begin{cases} SE(2) \times W & \mapsto & L^2 \\ (\gamma, w) & \rightarrow & T(\gamma, w) = a(\gamma)u_* - u_* + w \end{cases}$$

is a local diffeomorphism near $(\mathbb{1}, 0)$. The solution of $T(\gamma, w) = v$ is given by

$$(2.29) \quad \gamma = \Gamma^{-1}((I - P)v), \quad w = v + u_* - a(\gamma)u_* .$$

PROOF. It suffices to note that the map

$$(\mu, w) \rightarrow DT(\mathbb{1}, 0)(\mu, w) = D[a(\mathbb{1})u_*]\mu + w$$

is a linear homeomorphism from $\mathbb{R}^3 \times W$ onto L^2 and that $T(\gamma, w) = v$ and $w \in W$ imply $(I - P)(a(\gamma)u_* - u_*) = (I - P)v$; hence we have $\gamma = \Gamma^{-1}((I - P)v)$ by the first part of the lemma. \square

2.4. The Decomposed System. Consider a solution $u(\cdot, t)$ of (1.21) for a time interval $0 \leq t < t_\infty$ where t_∞ is chosen so that $u(\cdot, t)$ lies completely in a neighborhood of u_* where the transformation T (see (2.28)) can be inverted, i.e., (2.24) can be re-written as

$$(2.30) \quad u(\cdot, t) - u_*(\cdot) = T(\gamma(t), w(\cdot, t)), \quad 0 \leq t < t_\infty .$$

(The time interval $0 \leq t < t_\infty$ may equal $0 \leq t < \infty$; in fact, our arguments will show that the choice $t_\infty = \infty$ can be made if the initial perturbation is small enough.)

We derive differential equations and initial conditions for $\gamma(t)$ and $w(\cdot, t) \in W$. At $t = 0$ we have

$$u(\cdot, 0) = u_* + v_0 = a(\gamma(0))u_* + w(\cdot, 0),$$

hence by Lemma 2.5

$$(2.31) \quad \begin{aligned} \gamma(0) &= \gamma_0 := \Gamma^{-1}((I - P)v_0) \\ w(\cdot, 0) &= w_0 := v_0 + u_* - a(\gamma_0)u_* . \end{aligned}$$

In the following, we use the abbreviation

$$\gamma(t)x = R_{-\theta(t)}(x - \eta(t)) \quad \text{if} \quad \gamma(t) = (\eta(t), \theta(t)) .$$

Insert $u(\cdot, t)$ from (2.24) into (1.21) and obtain for $0 \leq t < t_\infty$:

$$\begin{aligned} 0 &= \frac{d}{dt}(a(\gamma(t)u_*)) + w_t(\cdot, t) - A \Delta(a(\gamma(t)u_*)) - A \Delta w(\cdot, t) \\ &\quad - cD_\phi(a(\gamma(t)u_*)) - cD_\phi w(\cdot, t) - f(a(\gamma(t)u_* + w(\cdot, t))) \\ &= Du_*(\gamma(t)x) \left[-R_{\frac{\pi}{2} - \theta(t)}(x - \eta(t))\dot{\theta}(t) - R_{-\theta(t)}\dot{\eta}(t) \right] \\ &\quad - A \Delta u_*(\gamma(t)x) + w_t(\cdot, t) - A \Delta w(\cdot, t) - cD_\phi w(\cdot, t) \\ &\quad - f(a(\gamma(t)u_* + w(\cdot, t))) - cDu_*(\gamma(t)x)R_{-\theta(t) + \frac{\pi}{2}}x . \end{aligned}$$

Now we use that

$$Du_*(\gamma(t)x)R_{-\theta(t) + \frac{\pi}{2}}x = Du_*(\gamma(t)x)R_{\frac{\pi}{2}}(\gamma(t)x + R_{-\theta(t)}\eta(t))$$

and evaluate (1.20) at $\gamma = \gamma(t)$ to obtain

$$-A \Delta u_*(\gamma(t)x) = cDu_*(\gamma(t)x)R_{\frac{\pi}{2}}\gamma(t)x + f(a(\gamma(t)u_*)) .$$

Therefore,

$$\begin{aligned} 0 &= -Du_*(\gamma(t)x) [R_{-\theta(t)}(\dot{\eta}(t) + cR_{\frac{\pi}{2}}\eta(t))] - D_\phi u_*(\gamma(t)x)\dot{\theta}(t) \\ &\quad + w_t(\cdot, t) - A \Delta w(\cdot, t) - cD_\phi w(\cdot, t) - B(x)w(\cdot, t) \\ &\quad - [f(u_*(\gamma(t)x) + w(\cdot, t)) - f(u_*(\gamma(t)x)) - Df(u_*(x))w(\cdot, t)]. \end{aligned}$$

Introducing the remainder

$$(2.32) \quad r^{[f]}(\gamma, w) = f(a(\gamma)u_* + w) - f(a(\gamma)u_*) - Df(u_*(\cdot))w$$

we finally arrive at the equation

$$(2.33) \quad \begin{aligned} w_t(\cdot, t) &= \mathcal{L}w(\cdot, t) + r^{[f]}(\gamma(t), w(\cdot, t)) \\ &\quad + Du_*(\gamma(t)\cdot)R_{-\theta(t)} [\dot{\eta}(t) + cR_{\frac{\pi}{2}}\eta(t)] + D_\phi u_*(\gamma(t)\cdot)\dot{\theta}(t). \end{aligned}$$

For $\gamma \in SE(2)$ we define the linear mapping

$$(2.34) \quad S(\gamma) : \begin{cases} \mathbb{R}^3 & \mapsto \Phi \\ \mu & \rightarrow (I - P) \left[Du_*(\gamma \cdot) \begin{pmatrix} \mu_1 \\ \mu_2 \end{pmatrix} + D_\phi u_*(\gamma \cdot)\mu_3 \right] \end{cases}.$$

Since $S(\mathbb{1})$ agrees with $D\Gamma(\mathbb{1})$ from (2.27) we find that the inverse $S(\gamma)^{-1} : \Phi \rightarrow \mathbb{R}^3$ exists and depends smoothly on γ in a neighborhood of $\mathbb{1}$. Applying $I - P$ to (2.33) and using the inverse of $S(\gamma(t))$, $0 \leq t < t_\infty$, we obtain the following differential equation for $\gamma(t) = (\eta(t), \theta(t))$:

$$(2.35) \quad \begin{aligned} \dot{\gamma} - E_c \gamma &\equiv \begin{pmatrix} \dot{\eta} + cR_{\frac{\pi}{2}}\eta \\ \dot{\theta} \end{pmatrix} = r^{[\gamma]}(\gamma, w), \\ r^{[\gamma]}(\gamma, w) &= - \begin{pmatrix} R_\theta & 0 \\ 0 & 1 \end{pmatrix} S(\gamma)^{-1} (I - P) r^{[f]}(\gamma, w), \quad E_c = \begin{pmatrix} -cR_{\frac{\pi}{2}} & 0 \\ 0 & 0 \end{pmatrix}. \end{aligned}$$

In the next step we apply the projector P to (2.33) to obtain the w -equation:

$$(2.36) \quad w_t - \mathcal{L}w = (P - P(Du_*(\gamma \cdot) \quad D_\phi u_*(\gamma \cdot))) S(\gamma)^{-1} (I - P) r^{[f]}(\gamma, w) =: r^{[w]}(\gamma, w).$$

Together with initial conditions (2.31), equations (2.35) and (2.36) constitute the transformed system. Working the way backwards, we see that any solution $(\gamma(t), w(\cdot, t))$ of the transformed system that stays in a neighborhood of $(\mathbb{1}, 0)$ leads to a solution of (1.22) via the transformation (2.24).

In Section 6 we will show that both remainders $r^{[w]}$ and $r^{[\gamma]}$ are Lipschitz bounded with respect to $\|w\|_{H^2}$ with Lipschitz constants that become small as $\gamma \rightarrow \mathbb{1}$ and $\|w\|_{H^2} \rightarrow 0$. This will lead to the proof of nonlinear stability.

3. Resolvent Estimates for \mathcal{L}_∞

Recall the definition

$$(3.1) \quad \mathcal{L}_\infty v = A\Delta v + cD_\phi v + B_\infty v, \quad v \in H_{Eucl}^2,$$

where $A, B_\infty \in \mathbb{R}^{m \times m}$ are constant matrices satisfying

$$(3.2) \quad \langle u, Au \rangle \geq 2\beta_A |u|^2, \quad \langle u, B_\infty u \rangle \leq -2\beta |u|^2 \quad \text{for all } u \in \mathbb{R}^m$$

and

$$\beta_A > 0, \quad \beta > 0, \quad c \in \mathbb{R}, \quad c \neq 0 .$$

THEOREM 3.1. *Let $s = s_1 + is_2 \in \mathbb{C}$ with $s_j \in \mathbb{R}$ and $s_1 \geq -\beta$. Then, for every $h \in L^2$, the equation*

$$\mathcal{L}_\infty v - sv = h$$

has a unique solution $v \in H_{Eucl}^2$ and

$$(3.3) \quad \|v\|_{L^2} \leq \frac{1}{2\beta + s_1} \|h\|_{L^2}$$

$$(3.4) \quad \|v\|_{H^2}^2 + c^2 \|D_\phi v\|_{L^2}^2 \leq C(1 + s_2^2) \|h\|_{L^2}^2 .$$

The constant C depends only on β_A, β , and $|B_\infty|, |A|$.

The theorem is proved in three steps. First, in the next section, we give a formal derivation of the resolvent estimate (3.4), assuming existence of v . In Section 3.2 we prove existence of a solution for a scalar equation like (3.1). The proof uses Fourier expansion in ϕ and the solution of inhomogeneous Bessel equations. In Section 3.3 we generalize the existence argument from the scalar case to the case of a system (3.1).

If $h \in H^n$ (instead of $h \in L^2$) one can extend the estimates of the previous theorem to higher derivatives of v where v is the solution of the resolvent equation

$$(3.5) \quad A\Delta v + cD_\phi v + B_\infty v - sv = h .$$

Note that this extension is not completely trivial since the term $D_\phi v$ has variable, unbounded coefficients.

THEOREM 3.2. *Let $s = s_1 + is_2 \in \mathbb{C}$ with $s_j \in \mathbb{R}$ and $s_1 \geq -\beta$. Let $h \in H^n$ and let $v \in H_{Eucl}^2$ denote the solution of (3.5) of Theorem 3.1. Then $v \in H_{Eucl}^{n+2}$ and*

$$(3.6) \quad |v|_{H^n} \leq \frac{1}{2\beta + s_1} |h|_{H^n}$$

$$(3.7) \quad \|v\|_{H^{n+2}}^2 + c^2 \|D_\phi v\|_{H^n}^2 \leq C(1 + s_2^2) \|h\|_{H^n}^2 .$$

Remark: We found it instructive to derive detailed resolvent estimates via the energy method. In Section 5 we use the resolvent estimates to construct the corresponding semigroup $e^{t\mathcal{L}_\infty}$. An alternative approach is to start with the known semigroups generated by $\Delta + B_\infty$ and D_ϕ and to use their commutativity to construct and estimate $e^{t\mathcal{L}_\infty}$. Then resolvent estimates for \mathcal{L}_∞ can be obtained from the integral representation $(\mathcal{L}_\infty - s)^{-1} = \int_0^\infty \exp(t(\mathcal{L}_\infty - s))dt$.

3.1. Formal Derivation of the Resolvent Estimates. We first note a generalization of the estimates (3.2) to complex vectors. If $u = u_1 + iu_2, u_j \in \mathbb{R}^m$, then we have

$$\langle u_1 + iu_2, A(u_1 + iu_2) \rangle = \langle u_1, Au_1 \rangle + \langle u_2, Au_2 \rangle - i\langle u_2, Au_1 \rangle + i\langle u_1, Au_2 \rangle .$$

Therefore, taking real parts,

$$\operatorname{Re} \langle u, Au \rangle \geq 2\beta_A |u|^2 \quad \text{for all } u \in \mathbb{C}^m .$$

Formal Derivation of the Estimates of Theorem 3.1: Taking the L^2 -inner product of

$$(3.8) \quad A\Delta v + cD_\phi v + B_\infty v - sv = h$$

with v one obtains

$$(v, A\Delta v)_{L^2} + c(v, D_\phi v)_{L^2} + (v, B_\infty v)_{L^2} - s\|v\|_{L^2}^2 = (v, h)_{L^2} .$$

Integrating by parts and taking real parts yields

$$(3.9) \quad -2\beta_A|v|_{H^1}^2 - 2\beta\|v\|_{L^2}^2 - s_1\|v\|_{L^2}^2 \geq \operatorname{Re}(v, h)_{L^2} .$$

Taking absolute values one obtains

$$2\beta_A|v|_{H^1}^2 + (2\beta + s_1)\|v\|_{L^2}^2 \leq \|v\|_{L^2}\|h\|_{L^2}$$

which yields (3.3). Since $\beta + s_1 \geq 0$ one also obtains

$$2\beta_A|v|_{H^1}^2 + \beta\|v\|_{L^2}^2 \leq \|v\|_{L^2}\|h\|_{L^2} .$$

This implies that

$$|v|_{H^1}^2 + \|v\|_{L^2}^2 \leq C\|h\|_{L^2}^2, \quad C = C(\beta_A, \beta) .$$

Next, take the L^2 -inner product of (3.8) with Δv ,

$$(\Delta v, A\Delta v)_{L^2} + c(\Delta v, D_\phi v)_{L^2} + (\Delta v, B_\infty v)_{L^2} - s(\Delta v, v)_{L^2} = (\Delta v, h)_{L^2} .$$

Taking real parts and using Lemma 2.1 yields

$$\frac{1}{2}(\Delta v, (A + A^T)\Delta v)_{L^2} - \sum_j \operatorname{Re}(D_j v, B_\infty D_j v)_{L^2} + s_1|v|_{H^1}^2 = \operatorname{Re}(\Delta v, h)_{L^2} .$$

Here

$$-\operatorname{Re}(D_j v, B_\infty D_j v)_{L^2} \geq 2\beta\|D_j v\|^2 ,$$

and one finds that

$$2\beta_A\|\Delta v\|_{L^2}^2 + (2\beta + s_1)|v|_{H^1}^2 \leq \|\Delta v\|_{L^2}\|h\|_{L^2} .$$

Since $\beta + s_1 \geq 0$ one obtains

$$(3.10) \quad 2\beta_A\|\Delta v\|_{L^2} \leq \|h\|_{L^2} .$$

Finally, to estimate $\|D_\phi v\|_{L^2}$ we take the L^2 -inner product of (3.8) with $D_\phi v$:

$$(3.11) \quad (D_\phi v, A\Delta v)_{L^2} + c\|D_\phi v\|_{L^2}^2 + (D_\phi v, B_\infty v)_{L^2} - s(D_\phi v, v)_{L^2} = (D_\phi v, h)_{L^2} .$$

Here $(D_\phi v, v)_{L^2}$ is purely imaginary. Therefore, taking real parts in (3.11) and then taking absolute values yields

$$|c\|D_\phi v\|_{L^2}^2 \leq (|B_\infty| + |s_2|)\|D_\phi v\|_{L^2}\|v\|_{L^2} + |A|\|D_\phi v\|_{L^2}\|\Delta v\|_{L^2} + \|D_\phi v\|_{L^2}\|h\|_{L^2} .$$

Divide by $\|D_\phi v\|_{L^2}$ and use the estimates (3.10) and $\|v\|_{L^2} \leq C\|h\|_{L^2}$ to obtain

$$|c| \|D_\phi v\|_{L^2} \leq C(1 + |s_2|) \|h\|_{L^2} .$$

This completes the formal derivation of the resolvent estimate (3.4).

Formal Derivation of the Estimates of Theorem 3.2: Take the H^n -inner product of the resolvent equation (3.8) with v to obtain

$$(v, A\Delta v)_{H^n} + c(v, D_\phi v)_{H^n} + (v, B_\infty v)_{H^n} - s|v|_{H^n}^2 = (v, h)_{H^n} .$$

Then take the real part of the resulting equation and note that

$$\operatorname{Re} (v, D_\phi v)_{H^n} = 0$$

by Lemma 2.2. One finds that

$$(3.12) \quad -2\beta_A |v|_{H^{n+1}}^2 - 2\beta |v|_{H^n}^2 - s_1 |v|_{H^n}^2 \geq \operatorname{Re} (v, h)_{H^n} .$$

Taking absolute values the estimate (3.6) follows.

Similarly, taking the H^n -inner product of (3.8) with Δv the estimate (3.10) generalizes to

$$(3.13) \quad 2\beta_A |\Delta v|_{H^n} \leq |h|_{H^n} .$$

Finally, taking the H^n -inner product of (3.8) with $D_\phi v$ leads to (3.7).

3.2. Existence in the Scalar Case. Consider a scalar equation

$$(3.14) \quad \Delta v + cD_\phi v - (2\beta + s)v = h$$

where h is a given complex valued function in the plane and

$$c \in \mathbb{R}, \quad c \neq 0, \quad \beta > 0, \quad s = s_1 + is_2, \quad s_1 \geq -\beta .$$

To show solubility of the equation, we may put strong assumptions on h because we can derive estimates of the solution v in terms of h and then can make an approximation argument. If written in Cartesian coordinates, we will assume that

$$h \in C_0^\infty(\mathbb{R}^2 \setminus \{0\}) ,$$

i.e., h is a C^∞ function compactly supported in $\mathbb{R}^2 \setminus \{0\}$. The set of these functions h is dense in L^2 .

To show solubility of (3.14) we will treat the equation in polar coordinates. For simplicity of notation, we simply write $h = h(r, \phi)$ for the right-hand side and $v = v(r, \phi)$ for the solution to be constructed. Using Fourier expansion in ϕ we write

$$h(r, \phi) = \sum h_n(r) e^{in\phi}, \quad v(r, \phi) = \sum v_n(r) e^{in\phi}$$

and obtain, formally,

$$(3.15) \quad v_n'' + \frac{1}{r} v_n' - \frac{n^2}{r^2} v_n - (2\beta + s - icn)v_n = h_n(r), \quad r > 0, \quad n \in \mathbb{Z} .$$

Note that

$$\|h\|_{L^2}^2 = 2\pi \sum \int_0^\infty r|h_n(r)|^2 dr .$$

If we abbreviate

$$q^2 = 2\beta + s - icn = 2\beta + s_1 + is_2 - icn$$

then

$$\operatorname{Re} q^2 = 2\beta + s_1 \geq \beta > 0, \quad \operatorname{Re} q > 0 .$$

We will prove:

LEMMA 3.1. *Consider the ODE*

$$(3.16) \quad \frac{1}{r} (rv'_n)' - \frac{n^2}{r^2} v_n - q^2 v_n = h_n(r)$$

and assume

$$\operatorname{Re} q^2 \geq \beta > 0, \quad \operatorname{Re} q > 0, \quad h_n \in C_0^\infty(0, \infty) .$$

The ODE has a unique solution $v_n \in C^\infty[0, \infty)$ which decays exponentially as $r \rightarrow \infty$. This solution satisfies

$$(3.17) \quad |v_n(r)| = \mathcal{O}(r^{|n|}) \quad \text{as } r \rightarrow 0 \quad \text{and} \quad |v_n(r)| \leq e^{-\frac{1}{2}\operatorname{Re} qr} \quad \text{as } r \rightarrow \infty$$

and satisfies the estimates

$$(3.18) \quad \int_0^\infty r|v'_n|^2 dr + n^2 \int_0^\infty \frac{1}{r}|v_n|^2 dr + \int_0^\infty r|v_n|^2 dr \leq C_\beta \int_0^\infty r|h_n|^2 dr .$$

Proof: Estimate and Uniqueness. First assume existence of a solution v_n of (3.16), (3.17). Multiply (3.16) by $r\bar{v}_n$ and integrate by parts to obtain

$$-\int_0^\infty r|v'_n|^2 dr - n^2 \int_0^\infty \frac{1}{r}|v_n|^2 dr - q^2 \int_0^\infty r|v_n|^2 dr = \int_0^\infty r\bar{v}_n h_n dr .$$

Taking real parts and using that $\operatorname{Re} q^2 \geq \beta > 0$ the estimate (3.18) follows.

Existence. First consider the homogeneous equation

$$(3.19) \quad r^2 v_n'' + rv'_n - q^2 r^2 v_n - n^2 v_n = 0 .$$

Setting $v_n(r) = y(iqr)$ one obtains Bessel's equations of order n :

$$z^2 y''(z) + zy'(z) + (z^2 - n^2)y(z) = 0, \quad z = iqr .$$

The function

$$v_n^{(1)}(r) = J_n(iqr), \quad r \geq 0 ,$$

solves (3.19) and satisfies

$$|v_n^{(1)}(r)| = \mathcal{O}(r^{|n|}) \quad \text{as } r \rightarrow 0 .$$

Write (3.19) in the form

$$v_n'' + \frac{1}{r}v_n' - q^2v_n - \frac{n^2}{r^2}v_n = 0 .$$

For large r one obtains the constant coefficient approximation

$$v_n'' - q^2v_n = 0$$

which has the decaying solution e^{-qr} , $\operatorname{Re} q > 0$. A perturbation argument shows that (3.19) has a nontrivial, exponentially decaying solution

$$v_n^{(2)}(r) \quad \text{with} \quad |v_n^{(2)}(r)| \leq C e^{-\frac{1}{2}\operatorname{Re} qr}, \quad r \geq 1 .$$

The two solutions $v_n^{(1)}$ and $v_n^{(2)}$ of (3.19) are linearly independent since otherwise $v_n^{(1)} \equiv 0$ by (3.18).

A solution v_n of (3.16), (3.17) can be constructed as follows. Assuming that the right-hand side $h_n(r)$ is supported in $0 < a < r < b$, let $v_{n,par}(r)$ denote the particular solution of (3.16) with

$$v_{n,par}(a) = v_{n,par}'(a) = 0 ,$$

thus

$$v_{n,par}(r) = 0 \quad \text{for} \quad 0 \leq r \leq a .$$

We construct v_n in the form

$$v_n(r) = v_{n,par}(r) + \alpha v_n^{(1)}(r)$$

for suitable α . In fact, consider the boundary operator

$$R_b v_n = \gamma_1 v_n(b) + \gamma_2 v_n'(b)$$

where $(\gamma_1, \gamma_2) \neq (0, 0)$ is chosen so that $R_b v_n^{(2)} = 0$. Then choose α so that

$$0 = R_b v_n = R_b v_{n,par} + \alpha R_b v_n^{(1)} .$$

(Note that $R_b v_n^{(1)} \neq 0$ since $v_n^{(1)}, v_n^{(2)}$ are linearly independent.) With this choice of α , the function $v_n = v_{n,par} + \alpha v_n^{(1)}$ is a multiple of $v_n^{(2)}$ for $r \geq b$. Consequently, (3.17) holds. \diamond .

If $h^{(N)}(r, \phi) = \sum_{n=-N}^N h_n(r) e^{in\phi}$ is a finite Fourier approximation of $h(r, \phi)$, we obtain the corresponding solution

$$v^{(N)}(r, \phi) = \sum_{n=-N}^N v_n(r) e^{in\phi}$$

of (3.14) with right-hand side $h^{(N)}$. The estimate (3.18) yields

$$|v^{(N)}|_{H^1}^2 + \|v^{(N)}\|_{L^2}^2 \leq C \|h\|_{L^2}^2 .$$

Clearly, the full estimate corresponding to (3.4), which we have derived formally in Section 3.1, is valid for the finite Fourier sum $v^{(N)}$. For $N \rightarrow \infty$ we obtain the solution $v \in H_{Eucl}^2$ of (3.14) and the estimate (3.4).

3.3. Existence in the Systems Case. Consider the equation $\mathcal{L}_\infty v - sv = h$ under the assumptions specified in Theorem 3.1 but assume $h \in C_0^\infty(\mathbb{R}^2 \setminus \{0\})$. As in the scalar case, we write

$$h(r, \phi) = \sum h_n(r)e^{in\phi}, \quad v(r, \phi) = \sum v_n(r)e^{in\phi},$$

and obtain, for each integer n , the second order system

$$(3.20) \quad A(v_n'' + \frac{1}{r}v_n' - \frac{n^2}{r^2}v_n) - Pv_n = h_n(r), \quad r > 0,$$

with

$$P = -B_\infty - icnI + sI.$$

LEMMA 3.2. *All eigenvalues μ of $A^{-1}P$ lie in*

$$\mathbb{C} \setminus (-\infty, 0].$$

Proof: If $A^{-1}Pu = \mu u, u \neq 0$, then

$$\mu Au = Pu = -B_\infty u + s_1 u + i(s_2 - cn)u,$$

thus

$$\begin{aligned} \operatorname{Re}(\mu \langle u, Au \rangle) &= -\operatorname{Re} \langle u, B_\infty u \rangle + s_1 |u|^2 \\ &\geq \beta |u|^2 > 0. \end{aligned}$$

Since $\operatorname{Re} \langle u, Au \rangle > 0$, it is not possible that $\mu \in (-\infty, 0]$. \diamond

To solve (3.20) let us first assume that $A^{-1}P$ is diagonalizable,

$$T^{-1}A^{-1}PT = D = \operatorname{diag}(\mu_1, \dots, \mu_m).$$

Then, if $v_n = Tw_n$, the system (3.20) transforms to

$$(3.21) \quad w_n'' + \frac{1}{r}w_n' - \frac{n^2}{r^2}w_n - Dw_n = T^{-1}h_n(r), \quad r > 0,$$

The above system consists of n scalar equations of the form

$$(3.22) \quad \alpha'' + \frac{1}{r}\alpha' - \frac{n^2}{r^2}\alpha - \mu\alpha = g(r), \quad g \in C_0^\infty(0, \infty).$$

Here $\mu \in \mathbb{C} \setminus (-\infty, 0]$ and we can write

$$\mu = q^2, \quad \operatorname{Re} q > 0.$$

We cannot directly apply Lemma 3.1 since we do not know if $\operatorname{Re} \mu = \operatorname{Re}(q^2) > 0$. However, we know from the scalar case that (3.21) has two nontrivial solutions

$$\alpha^{(1)}(r), \quad \alpha^{(2)}(r),$$

where $\alpha^{(1)}(r) = \mathcal{O}(r^{|n|})$ for $r \rightarrow 0$ and where $\alpha^{(2)}(r)$ decays exponentially as $r \rightarrow \infty$. If the function $\alpha^{(2)}(r)$ would be a multiple of $\alpha^{(1)}(r)$ then we would obtain a nontrivial, exponentially decaying solution $v_n(r)$ of the homogeneous system (3.20)

with $v_n(r) = \mathcal{O}(r^{|n|})$. This would contradict an energy estimate that one can derive for (3.20) as in the scalar case.

Thus, we conclude that the two functions $\alpha^{(1)}(r)$ and $\alpha^{(2)}(r)$ are linearly independent. We can then construct an exponentially decaying solution of the inhomogeneous equation (3.22) as in the proof of Lemma 3.1. These arguments show the existence of an exponentially decaying solution $v_n \in C^\infty[0, \infty)$ of the system (3.20) under the assumption that $A^{-1}P$ is diagonalizable. By summing the Fourier series, we obtain a solution $v \in H^2_{Eucl}$ of the equation $\mathcal{L}_\infty v - sv = h$.

If $A^{-1}P$ is not diagonalizable, we approximate A and P by A_ε and P_ε so that $A_\varepsilon^{-1}P_\varepsilon$ is diagonalizable. Since the estimates do not depend on ε , we can make a small perturbation argument and obtain a solution also in the case where $A^{-1}P$ is not diagonalizable. This completes the proof of Theorem 3.1.

4. Fredholm Theory

Recall the definition

$$\mathcal{L}v = A\Delta v + cD_\phi v + B(x)v, \quad v \in H^2_{Eucl} .$$

We show the Fredholm property for \mathcal{L} using the Riesz–Fréchet–Kolmogorov Theorem (see, for example, [1, Ch.2], [20, Ch. X]).

THEOREM 4.1. (*Riesz–Fréchet–Kolmogorov*) *A set $V \subset L^2(\mathbb{R}^d)$ is precompact with respect to the L^2 -norm if and only if the following three conditions hold:*

(1)

$$\lim_{R \rightarrow \infty} \sup_{v \in V} \int_{|x| \geq R} |v(x)|^2 dx = 0 ;$$

(2)

$$\sup_{v \in V} \|v\|_{L^2} < \infty ;$$

(3)

$$\lim_{\xi \rightarrow 0} \sup_{v \in V} \int_{\mathbb{R}^d} |v(x + \xi) - v(x)|^2 dx = 0 .$$

LEMMA 4.1. *Let $k \geq 0$ and let $M : \mathbb{R}^d \mapsto \mathbb{R}^{m \times m}$ be a matrix valued C^k -function satisfying*

$$(4.1) \quad \sup_{|x| \geq R} |D^\gamma M(x)| \rightarrow 0 \quad \text{as } R \rightarrow \infty, \quad |\gamma| \leq k.$$

Then the operator of multiplication

$$(4.2) \quad \tilde{M} : \begin{cases} H^{k+1}(\mathbb{R}^d, \mathbb{R}^m) & \mapsto H^k(\mathbb{R}^d, \mathbb{R}^m) \\ u(\cdot) & \mapsto M(\cdot)u(\cdot) \end{cases}$$

is compact.

PROOF. Consider first the case $k = 0$ and apply Theorem 4.1 to the set

$$V = \{Mu : u \in H^1, \|u\|_{H^1} \leq 1\}.$$

From (4.1) we have

$$\begin{aligned} \int_{|x| \geq R} |M(x)u(x)|^2 dx &\leq \sup\{|M(x)| : |x| \geq R\} \|u\|_{L^2}^2 \\ &\leq \sup\{|M(x)| : |x| \geq R\} \rightarrow 0 \text{ as } R \rightarrow \infty. \end{aligned}$$

Clearly, V is bounded in L^2 . For all $\|u\|_{H^1} \leq 1$ and $\xi \in \mathbb{R}^d$ we have

$$\begin{aligned} \int_{\mathbb{R}^d} |u(x + \xi) - u(x)|^2 dx &= \int_{\mathbb{R}^d} \left| \int_0^1 Du(x + s\xi) ds \xi \right|^2 dx \\ &\leq \int_{\mathbb{R}^d} |\xi|^2 \int_0^1 |Du(x + s\xi)|^2 ds dx \\ &= |\xi|^2 \int_0^1 \int_{\mathbb{R}^d} |Du(x + s\xi)|^2 dx ds \\ &= |\xi|^2 \int_{\mathbb{R}^d} |Du(x)|^2 dx \leq |\xi|^2 \|u\|_{H^1}^2. \end{aligned}$$

Therefore we can estimate for $|\xi| \leq 1, \|u\|_{H^1} \leq 1$

$$\begin{aligned} &\int_{\mathbb{R}^d} |M(x + \xi)u(x + \xi) - M(x)u(x)|^2 dx \\ &\leq 2 \int_{|x| \geq R} \left(|M(x + \xi)|^2 |u(x + \xi)|^2 + |M(x)|^2 |u(x)|^2 \right) dx \\ &+ 2 \int_{|x| \leq R} \left(|M(x + \xi) - M(x)|^2 |u(x + \xi)|^2 + |M(x)|^2 |u(x + \xi) - u(x)|^2 \right) dx \\ &\leq 4 \sup_{|x| \geq R-1} |M(x)|^2 + 2 \sup_{|x| \leq R} |M(x + \xi) - M(x)|^2 \\ &+ 2 \|M(\cdot)\|_{L^\infty} \int_{\mathbb{R}^d} |u(x + \xi) - u(x)|^2 dx. \end{aligned}$$

Given $\varepsilon > 0$, choose R large so that the first term is $\leq \varepsilon$ and then choose $|\xi|$ small such that the last two terms are $\leq \varepsilon$. The proof for general k uses the first step and the Leibniz rule for $D^\gamma(M(x)u(x))$. \square

We proceed with the

PROOF. of Lemma 2.4 The homeomorphism $\mathcal{L}_\infty - s : H_{Eucl}^2 \rightarrow L^2$ is established in Section 3. Then we can write

$$(4.3) \quad \mathcal{L} - s = \mathcal{L}_\infty - s + B(\cdot) - B_\infty = (I + (B - B_\infty)(\mathcal{L}_\infty - s)^{-1})(\mathcal{L}_\infty - s).$$

By classical Fredholm theory (see, for example, [19, Ch.IV13]) it is sufficient to show that the operator $(B - B_\infty)(\mathcal{L}_\infty - s)^{-1}$ is compact in L^2 . But this follows from Lemma 4.1 using Assumption 1 and the fact that $(\mathcal{L}_\infty - s)^{-1}$ maps L^2 into $H_{Eucl}^2 \subset H^1$.

Since the Fredholm index of $\mathcal{L} - s_j$ is 0 we infer that $\text{codim}R(\mathcal{L} - s_j) = 1$ for all three eigenvalues s_j , see (2.16). Moreover, the relations $\dim(N(\mathcal{L}^* - s_j)) = 1, j = 1, 2, 3$ and the Fredholm alternative for (2.16) follow from [19, Ch.IV11] provided we show that the abstract adjoint $\mathcal{L}_* : D(\mathcal{L}_*) \subset L^2 \mapsto L^2$, defined there, coincides with the formal adjoint $\mathcal{L}^* : H_{Eucl}^2 \mapsto L^2$ defined in (2.13). Recall that

$$(4.4) \quad \begin{aligned} D(\mathcal{L}_*) &= \{v \in L^2 : \exists w \in L^2 \text{ s.t. } (\mathcal{L}u, v)_{L^2} = (u, w)_{L^2} \\ &\forall u \in D(\mathcal{L}) = H_{Eucl}^2\}, \end{aligned}$$

where \mathcal{L}_*v is defined as w given by (4.4). Then (2.14) implies that $H_{Eucl}^2 \subset D(\mathcal{L}_*)$ and that \mathcal{L}_* is an extension of \mathcal{L}^* . By Lemma 2.4 and Assumption 4 we have that $\mathcal{L} - s : H_{Eucl}^2 \mapsto L^2$ is a homeomorphism for all $s > 0$. Applying the same theory to the differential operator \mathcal{L}^* (note that B_∞^T satisfies Assumption 2 as well) we

find for $s > \|B^T\|_\infty$ that $\mathcal{L}^* - s : H_{Eucl}^2 \mapsto L^2$ is also a homeomorphism. Now take $v \in D(\mathcal{L}^*)$ with $w = \mathcal{L}^*v \in L^2$ as in (4.4) and let $\tilde{v} \in H_{Eucl}^2$ be the unique solution of $(\mathcal{L}^* - s)\tilde{v} = w - sv$. Then we obtain for all $u \in H_{Eucl}^2$

$$\begin{aligned} ((\mathcal{L} - s)u, v)_{L^2} &= -s(u, v)_{L^2} + (u, w)_{L^2} \\ (4.5) \qquad \qquad &= (u, (\mathcal{L}^* - s)\tilde{v})_{L^2} = ((\mathcal{L} - s)u, \tilde{v})_{L^2}. \end{aligned}$$

Since $\mathcal{L} - s$ is onto, we conclude $v = \tilde{v} \in H_{Eucl}^2$ and hence $D(\mathcal{L}^*) = D(\mathcal{L}^*)$. \square

5. Estimates for $e^{t\mathcal{L}_\infty}$ and $e^{t\mathcal{L}}$

Recall the definition

$$\mathcal{L}_\infty u = A\Delta u + cD_\phi u + B_\infty u, \quad u \in H_{Eucl}^2 .$$

Here

$$B_\infty \leq -2\beta I, \quad \beta > 0 ,$$

and

$$A \geq 2\beta_A I, \quad \beta_A > 0 .$$

The operator \mathcal{L}_∞ has constant coefficients, except for the term $D_\phi u$ which reads

$$D_\phi u = -x_2 D_1 u + x_1 D_2 u .$$

In Sections 5.1–5.3 we consider the Cauchy problem

$$u_t = \mathcal{L}_\infty u, \quad u(x, 0) = u_0(x) ,$$

and denote the solution by

$$u(\cdot, t) = e^{t\mathcal{L}_\infty} u_0 .$$

The proofs given below are formal in the sense that we assume u to be sufficiently regular and to have sufficient decay as $|x| \rightarrow \infty$. Note that in this section we work with real valued functions only. Recall the norms and spaces from Section 2.1, and for brevity let $(u, v) = (u, v)_{L^2}$.

5.1. Decay Estimates in H^n -Norm. Using Lemmas 2.1 and 2.2 we obtain the decay from energy estimates.

THEOREM 5.1. *For $n \in \mathbb{N}$ we have*

$$(5.1) \qquad \frac{1}{2} \frac{d}{dt} |u(\cdot, t)|_{H^n}^2 \leq -2\beta_A |u(\cdot, t)|_{H^{n+1}}^2 - 2\beta |u(\cdot, t)|_{H^n}^2 .$$

PROOF. For $n = 0$ this is the usual energy estimate:

$$\begin{aligned} \frac{1}{2} \frac{d}{dt} \|u\|^2 &= (u, u_t) \\ &= (u, A\Delta u) + c(u, D_\phi u) + (u, B_\infty u) \\ &\leq -2\beta_A |u|_{H^1}^2 - 2\beta \|u\|^2 \end{aligned}$$

where we have used that $(u, D_\phi u) = 0$. For $n \geq 1$ the proof proceeds in the same way using Lemma 2.1. \square

Clearly, the previous theorem implies

$$(5.2) \quad \frac{1}{2} \frac{d}{dt} \|u(\cdot, t)\|_{H^2}^2 \leq -2\beta \|u(\cdot, t)\|_{H^2}^2 .$$

This yields the decay estimate

$$(5.3) \quad \|e^{t\mathcal{L}}\|_{H^2 \rightarrow H^2} \leq e^{-2\beta t} .$$

The same estimate holds if we replace the H^2 -norm by the H^1 -norm or by the L^2 -norm.

5.2. Boundedness of $e^{t\mathcal{L}}$ from H^2 to H^3 .

THEOREM 5.2. *There is a constant $C > 0$ so that for any $t > 0$:*

$$(5.4) \quad \|u(\cdot, t)\|_{H^3}^2 \leq \frac{C}{t} \|u_0\|_{H^2}^2 .$$

PROOF. First integrate (5.1) for $n = 2$ to obtain

$$\|u(\cdot, t)\|_{H^2}^2 - \|u_0\|_{H^2}^2 + 4\beta_A \int_0^t \|u(\cdot, s)\|_{H^3}^2 ds \leq 0 ,$$

thus

$$(5.5) \quad \int_0^t \|u(\cdot, s)\|_{H^3}^2 ds \leq \frac{1}{4\beta_A} \|u_0\|_{H^2}^2 .$$

Consider

$$(5.6) \quad \frac{d}{dt} (t \|u(\cdot, t)\|_{H^3}^2) = \|u(\cdot, t)\|_{H^3}^2 + t \frac{d}{dt} \|u(\cdot, t)\|_{H^3}^2 .$$

From Theorem 5.1 with $n = 3$ we obtain

$$\frac{d}{dt} \|u(\cdot, t)\|_{H^3}^2 \leq 0 .$$

Using this in (5.6) we find

$$\frac{d}{dt} (t \|u(\cdot, t)\|_{H^3}^2) \leq \|u(\cdot, t)\|_{H^3}^2$$

and integration yields

$$\begin{aligned} t \|u(\cdot, t)\|_{H^3}^2 &\leq \int_0^t \|u(\cdot, s)\|_{H^3}^2 ds \\ &\leq \frac{1}{4\beta_A} \|u_0\|_{H^2}^2 \end{aligned}$$

This proves the theorem. □

Combining the result of the previous theorem with the decay estimate of $\|u(\cdot, t)\|_{H^2}$ we have

$$\|u(\cdot, t)\|_{H^3}^2 \leq \frac{C}{t} \|u_0\|_{H^2}^2 \quad \text{for } 0 < t .$$

In particular,

$$(5.7) \quad \|e^{t\mathcal{L}\infty}\|_{H^2 \rightarrow H^3} \leq \frac{C}{\sqrt{t}} \quad \text{for } 0 < t .$$

5.3. Estimates of $D_\phi u$. The function $D_\phi u$ satisfies

$$D_\phi u_t = A\Delta D_\phi u + cD_\phi D_\phi u + B_\infty D_\phi u, \quad D_\phi u(\cdot, 0) = D_\phi u_0 .$$

The basic energy estimate applied to $v = D_\phi u$ yields

$$\|D_\phi u(\cdot, t)\|_{L^2} \leq e^{-2\beta t} \|D_\phi u_0\|_{L^2} .$$

We have shown:

THEOREM 5.3. *If $u_0 \in H^2_{Eucl}$ then*

$$\|u(\cdot, t)\|_{H^2}^2 + \|D_\phi u(\cdot, t)\|_{L^2}^2 \leq e^{-4\beta t} \left(\|u_0\|_{H^2}^2 + \|D_\phi u_0\|_{L^2}^2 \right) .$$

Moreover, the same arguments as in the previous section yield

$$\|u(\cdot, t)\|_{H^1}^2 \leq \frac{C}{t} \|u_0\|_{L^2}^2 \quad \text{for } 0 < t .$$

We may apply this estimate to $D_\phi u$ instead of u :

$$\|D_\phi u(\cdot, t)\|_{H^1}^2 \leq \frac{C}{t} \|D_\phi u_0\|_{L^2}^2 \quad \text{for } 0 < t .$$

5.4. Application of Theorem A.1. We apply Theorem A.1 to show that

$$\mathcal{L}u = \mathcal{L}_\infty u + (B(x) - B_\infty)u$$

generates an exponentially decaying semigroup.

THEOREM 5.4. *Under Assumptions 1-4 the operator \mathcal{L} generates a C^0 -semigroup $e^{t\mathcal{L}}$ on H^2 . For any $0 \leq \tilde{\beta} < 2\beta$ there exists a constant $C = C(\tilde{\beta})$ such that*

$$(5.8) \quad \|e^{t\mathcal{L}}u\|_{H^2} \leq Ce^{-t\tilde{\beta}} \|u\|_{H^2} \quad \text{for all } u \in W^2 = \Psi^\perp \cap H^2 .$$

PROOF. We use Theorem A.1 with $X = H^2$, $A = \mathcal{L}_\infty$, $D(A) = H^4_{Eucl}$ and the operator of multiplication $Bu = (B(\cdot) - B_\infty)u$. Since $C^\infty_0 \subset H^4_{Eucl}$ we obtain that H^4_{Eucl} is dense in H^2 . Closedness of \mathcal{L}_∞ follows from the resolvent estimate (3.7) for $n = 2$. The estimate (3.6) then guarantees via the Hille Yosida Theorem that \mathcal{L}_∞ generates a C^0 -semigroup on H^2 which is of type $\omega_A \leq -2\beta$; see also (5.3).

Next, we note that Assumption 1 implies

$$\sup_{|x| \geq R} |D_j(B(x) - B_\infty)| = \sup_{|x| \geq R} |D^2 f(u_*(x)) D_j u_*(x)| \rightarrow 0 \quad \text{as } R \rightarrow \infty ,$$

and, in a similar way,

$$\sup_{|x| \geq R} |D^\gamma(B(x) - B_\infty)| \rightarrow 0 \quad \text{as } R \rightarrow \infty \quad \text{for } |\gamma| \leq 2 .$$

From (5.7) we have that $e^{t\mathcal{L}_\infty}, t > 0$ maps H^2 into H^3 and by Lemma 4.1 ($k = 2$) we obtain that the operator

$$u \rightarrow (B(x) - B_\infty)e^{t\mathcal{L}_\infty}u, \quad t > 0,$$

from H^2 into itself is compact.

Therefore, \mathcal{L} also generates a C^0 -semigroup on H^2 with ⁴

$$(5.9) \quad |\sigma_{ess}(e^\mathcal{L})| \leq e^{-2\beta} < 1.$$

There is the slight complication that the eigenvalues λ of \mathcal{L} satisfy

$$\operatorname{Re} \lambda \leq -2\beta < 0$$

only if we restrict \mathcal{L} to $W_{Eucl}^2 = H_{Eucl}^2 \cap W$. The space W_{Eucl}^2 is not invariant under \mathcal{L}_∞ . Therefore, we repeat the arguments from the proof of the second assertion in Theorem A.1.

For a fixed $0 \leq \tilde{\beta} < 2\beta$ we have from (5.9)

$$|\sigma_{ess}(e^{\mathcal{L}+\tilde{\beta}})| \leq e^{-(2\beta-\tilde{\beta})} =: q < 1$$

where the essential spectrum is taken in H^2 . Now, $H^2 = \Phi \oplus W^2$ is a decomposition of H^2 into invariant subspaces of $e^\mathcal{L}$ (cf. (2.20),(2.21)) where $e^\mathcal{L}$ has three simple eigenvalues $1, e^{\pm ic}$ in Φ by Assumption 3. In particular, if we restrict $e^\mathcal{L}$ to W^2 the essential spectrum does not grow, i.e.

$$(5.10) \quad |\sigma_{ess}((e^{\mathcal{L}+\tilde{\beta}})|_{W^2})| \leq q < 1.$$

Moreover, by Assumption 4 the operator $\mathcal{L}|_{W^2}$ has no eigenvalues λ with $\operatorname{Re} \lambda \geq -2\beta$. Then the spectral mapping theorem for point spectra [13, Theorem 2.4] shows

$$\sigma_{point}((e^\mathcal{L})|_{W^2}) \subset \exp(\sigma_{point}(\mathcal{L}|_{W^2})) \cup \{0\}$$

and thus

$$|\sigma_{point}((e^{\mathcal{L}+\tilde{\beta}})|_{W^2})| \leq q.$$

Combining this with (5.10) we obtain $|\sigma((e^{\mathcal{L}+\tilde{\beta}})|_{W^2})| \leq q < 1$. The remaining arguments are as in Section A: There is a norm $\|\cdot\|_+$ on W^2 , equivalent to $\|\cdot\|_{H^2}$, so that

$$\|(e^{\mathcal{L}+\tilde{\beta}})|_{W^2}\|_+ \leq 1.$$

Therefore, $\|(e^{t(\mathcal{L}+\tilde{\beta})})|_{W^2}\|_+ \leq C$, and $\|(e^{t\mathcal{L}})|_{W^2}\|_+ \leq Ce^{-\tilde{\beta}t}$ for $t \geq 0$. Because of the norm-equivalence:

$$\|(e^{t\mathcal{L}})|_{W^2}\|_{H^2} \leq C_1 e^{-\tilde{\beta}t}.$$

□

6. Proof of Nonlinear Stability

In this section we complete the proof of Theorem 1.1 by a nonlinear stability argument applied to the integral equations related to (2.35), (2.36).

⁴The essential spectrum $\sigma_{ess}(A)$ of an operator A is defined in Definition 8.1 below. We write $|\sigma_{ess}(A)| \leq q$ if $|s| \leq q$ for all $s \in \sigma_{ess}(A)$.

6.1. Integral Equation Formulation. Recall the subspace from (2.18)

$$(6.1) \quad W^2 = \{u \in H^2 : (\psi^j, w)_{L^2} = 0, j = 1, 2, 3\}$$

and the linear operator from (2.11)

$$(6.2) \quad \mathcal{L}v = A\Delta v + cD_\phi v + B(x)v, \quad B(x) = Df(u_*(x)), \quad v \in H^2_{Eucl}.$$

In Section 5 we showed that \mathcal{L} generates a C^0 -semigroup $e^{t\mathcal{L}}$ on H^2 that has W^2 as an invariant subspace and satisfies

$$(6.3) \quad \|e^{t\mathcal{L}}w_0\|_{H^2} \leq C_W e^{-\tilde{\beta}t} \|w_0\|_{H^2} \quad \text{for } w_0 \in W^2, t \geq 0.$$

Here we can take $\beta \leq \tilde{\beta} < 2\beta$ arbitrary with C_W depending on $\tilde{\beta}$. By Duhamel's principle the integral formulation of (2.36) is

$$(6.4) \quad w(t) = e^{t\mathcal{L}}w_0 + \int_0^t e^{(t-\tau)\mathcal{L}} r^{[w]}(\gamma(\tau), w(\tau))d\tau,$$

$$(6.5) \quad w(0) = w_0 = v_0 + u_* - a(\gamma_0)u_*,$$

where γ_0 is given by (2.31) as follows

$$(6.6) \quad \gamma(0) = \gamma_0 = \Gamma^{-1}(I - P)v_0.$$

From (2.35) the integral formulation of the γ -equation is

$$(6.7) \quad \gamma(t) = e^{tE_c}\gamma_0 + \int_0^t e^{(t-\tau)E_c} r^{[\gamma]}(\gamma(\tau), w(\tau))d\tau.$$

We will estimate the remainders occurring in these equations.

6.2. Estimate of Group Action. The topology on the manifold $SE(2) = \mathbb{R}^2 \times S^1$ is generated by the metric

$$(6.8) \quad d(\gamma_1, \gamma_2) = d\left(\begin{pmatrix} \eta_1 \\ \theta_1 \end{pmatrix}, \begin{pmatrix} \eta_2 \\ \theta_2 \end{pmatrix}\right) = |\eta_1 - \eta_2| + d(\theta_1, \theta_2),$$

$$d(\theta_1, \theta_2) = \min_{n \in \mathbb{Z}} |\theta_1 - \theta_2 - 2\pi n|.$$

For convenience we use the same symbol d for the metric on S^1 and on $SE(2)$. We show that the action of the group $SE(2)$ on u_* is Lipschitz with respect to the metric on $SE(2)$.

LEMMA 6.1. *There exists a constant $C_a \geq 1$ such that for all $\gamma_1, \gamma_2 \in SE(2)$*

$$(6.9) \quad \|a(\gamma_1)u_* - a(\gamma_2)u_*\|_{H^2} \leq C_a d(\gamma_1, \gamma_2).$$

Remark. The proof will show that the constant C_a depends only on the semi norms $|D_\phi u_*|_{H^k}, |D_j u_*|_{H^k}$ for $j, k = 1, 2$ the existence of which is guaranteed by Assumption 3.

PROOF. From the triangle inequality

$$\|a(\gamma_1)u_* - a(\gamma_2)u_*\|_{H^2} \leq \|a(\eta_1, \theta_1)u_* - a(\eta_2, \theta_1)u_*\|_{H^2} + \|a(\eta_2, \theta_1)u_* - a(\eta_2, \theta_2)u_*\|_{H^2}$$

it is clear that it suffices to prove the inequalities

$$(6.10) \quad \|a(\eta_1, \theta)u_* - a(\eta_2, \theta)u_*\|_{H^2} \leq C|\eta_1 - \eta_2| \quad \text{for all } \theta \in S^1$$

$$(6.11) \quad \|a(\eta, \theta_1)u_* - a(\eta, \theta_2)u_*\|_{H^2} \leq Cd(\theta_1, \theta_2) \quad \text{for all } \eta \in \mathbb{R}^2.$$

Moreover, by invariance of the H^2 norm with respect to the group action (see (2.3), (2.4)) it is sufficient to consider (6.10) for $\theta = 0, \eta_2 = 0$ and (6.11) for $\eta = 0, \theta_2 = 0$, i.e. we must show

$$(6.12) \quad \|a(\eta, 0)u_* - u_*\|_{H^2} \leq C|\eta| \quad \text{for } \eta \in \mathbb{R}^2$$

$$(6.13) \quad \|a(0, \theta)u_* - u_*\|_{H^2} \leq Cd(\theta, 0) \quad \text{for } \theta \in S^1.$$

For $\theta \in S^1$ take $\tilde{\theta} \in (-\pi, \pi]$ such that $d(\theta, 0) = |\tilde{\theta}|$. We have

$$\begin{aligned} |u_*(R_{-\theta}x) - u_*(x)| &= |u_*(R_{-\tilde{\theta}}x) - u_*(x)| = \\ &= \left| \int_0^1 \frac{d}{dt} [u_*(R_{-\tilde{\theta}t}x)] dt \right| = \left| \int_0^1 D_\phi u_*(R_{-\tilde{\theta}t}x) dt \tilde{\theta} \right|. \end{aligned}$$

Integrating with respect to x and using Cauchy Schwarz and Fubini yields

$$\begin{aligned} \int |u_*(R_{-\theta}x) - u_*(x)|^2 dx &\leq \int \int_0^1 |D_\phi u_*(R_{-t\tilde{\theta}}x)|^2 dt |\tilde{\theta}|^2 dx \\ &= d(\theta, 0)^2 \int_0^1 \int |D_\phi u_*(R_{-t\tilde{\theta}}x)|^2 dx dt = d(\theta, 0)^2 \|D_\phi u_*\|^2. \end{aligned}$$

In a similar way

$$\begin{aligned} \int |u_*(x - \eta) - u_*(x)|^2 dx &\leq \int \left| \int_0^1 Du_*(x - t\eta) \eta dt \right|^2 dx \\ &\leq \int_0^1 \int |Du_*(x - t\eta)|^2 dx |\eta|^2 dt = \|Du_*\|^2 |\eta|^2. \end{aligned}$$

Summarizing, we have proved L^2 estimates (6.12) with $C = \|D_\phi u_*\|$ and (6.13) with $C = \|Du_*\|$.

Estimates of derivatives proceed in a similar fashion. Note that

$$D(a(0, \theta)u_* - u_*)(x) = (Du_*(R_{-\tilde{\theta}}x) - Du_*(x))R_{-\tilde{\theta}} + Du_*(x)(R_{-\tilde{\theta}} - I)$$

implies

$$\|D(a(0, \theta)u_* - u_*)\| \leq (\|D_\phi Du_*\| + \|Du_*\|)d(\theta, 0).$$

Using the commutator relations (2.7), (2.8) leads to the estimate

$$\|D(a(0, \theta)u_* - u_*)\| \leq (\|D_\phi u_*\|_{H^1} + 2\|Du_*\|_{H^1})d(\theta, 0).$$

Combining this with the estimate

$$\|D(a(\eta, 0)u_* - u_*)\| \leq \|D^2 u_*\| |\eta|$$

we obtain the estimates in (6.12), (6.13) for the H^1 norm. Finally, the second derivative satisfies

$$\begin{aligned} D^2(a(0, \theta)u_* - u_*) &= (D^2 u_*(R_{-\tilde{\theta}} \cdot) - D^2 u_*)[R_{-\tilde{\theta}}, R_{-\tilde{\theta}}] \\ &\quad + D^2 u_*[R_{-\tilde{\theta}} - I, R_{-\tilde{\theta}}] + D^2 u_*[I, R_{-\tilde{\theta}} - I]. \end{aligned}$$

This leads to the estimate

$$\|D^2(a(0, \theta)u_* - u_*)\| \leq (2\|D^2 u_*\| + \|D_\phi D^2 u_*\|)d(\theta, 0).$$

Again the commutator relations (2.7), (2.8) allow to estimate the constants in terms of $\|Du_*\|_{H^1}$ and $\|D_\phi u_*\|_{H^2}$ which are finite by Assumption 3. The proof of (6.12) is completed by the estimate

$$\|D^2(a(\eta, 0)u_* - u_*)\| \leq \|D^3 u_*\| |\eta|.$$

□

6.3. Estimates of Nonlinearities. Recall the Sobolev embedding estimate

$$(6.14) \quad \|u\|_\infty \leq C_e \|u\|_{H^2} \quad \text{for } u \in H^2(\mathbb{R}^2).$$

In the following we consider functions

$$(6.15) \quad u = a(\gamma)u_* + w, \quad \gamma \in SE(2), w \in H^2, \|w\|_{H^2} \leq \varepsilon_0,$$

where ε_0 will be made small during the proofs. Our first condition is $C_e \varepsilon_0 \leq 1$ so that (6.14) and (6.15) imply

$$(6.16) \quad \|u\|_\infty \leq \|u_*\|_\infty + 1.$$

Next introduce the constants

$$(6.17) \quad M_k = \max\{|D^k f(\xi)| : |\xi| \leq \|u_*\|_\infty + 1\}, \quad k = 0, \dots, 4.$$

LEMMA 6.2. *There exist constants $C_0, C_1, C_2 > 0$ and neighborhoods*

$$\begin{aligned} U_0 &= \{\gamma \in SE(2) : d(\gamma, \mathbb{1}) \leq \rho_0\} \\ W_0 &= \{w \in H^2_{Eucl} : \|w\|_{H^2} \leq \varepsilon_0\} \end{aligned}$$

such that the following estimates hold for all $w, w_1, w_2 \in W_0, \gamma, \gamma_1, \gamma_2 \in U_0$:

$$(6.18) \quad \begin{aligned} &\|r^{[f]}(\gamma, w_1) - r^{[f]}(\gamma, w_2)\|_{H^2} \\ &\leq C_0 \left(d(\gamma, \mathbb{1}) + \max(\|w_1\|_{H^2}, \|w_2\|_{H^2}) \right) \|w_1 - w_2\|_{H^2}, \end{aligned}$$

$$(6.19) \quad \|r^{[f]}(\gamma, w)\|_{H^2} \leq C_0 \left(d(\gamma, \mathbb{1}) + \|w\|_{H^2} \right) \|w\|_{H^2},$$

$$(6.20) \quad \begin{aligned} &\|r^{[w]}(\gamma, w_1) - r^{[w]}(\gamma, w_2)\|_{H^2} \\ &\leq C_1 \left(d(\gamma, \mathbb{1}) + \max(\|w_1\|_{H^2}, \|w_2\|_{H^2}) \right) \|w_1 - w_2\|_{H^2}, \end{aligned}$$

$$(6.21) \quad \|r^{[w]}(\gamma, w)\|_{H^2} \leq C_1 \left(d(\gamma, \mathbb{1}) + \|w\|_{H^2} \right) \|w\|_{H^2},$$

$$(6.22) \quad \begin{aligned} &|r^{[\gamma]}(\gamma_1, w_1) - r^{[\gamma]}(\gamma_2, w_2)| + \|r^{[w]}(\gamma_1, w_1) - r^{[w]}(\gamma_2, w_2)\|_{H^2} \\ &\leq C_2 (d(\gamma_1, \gamma_2) + \|w_1 - w_2\|_{H^2}). \end{aligned}$$

PROOF. Since $r^{[f]}(\gamma, 0) = 0$ it is obvious that (6.19) and (6.21) follow from (6.18) and (6.20) by setting $w_1 = w, w_2 = 0$.

It is useful to introduce the mapping $\rho^{[f]} : SE(2) \times \mathbb{R}^m \times \mathbb{R}^2 \mapsto \mathbb{R}^m$:

$$(6.23) \quad \rho^{[f]}(\gamma, w, x) = f(a(\gamma)u_*(x) + w) - f(a(\gamma)u_*(x)) - Df(u_*(x))w.$$

The corresponding Nemitzky operator from (2.32) is then given by

$$r^{[f]}(\gamma, w)(x) = \rho^{[f]}(\gamma, w(x), x), x \in \mathbb{R}^2 \quad \text{for } \gamma \in SE(2), w \in H^2.$$

Consider $\gamma \in SE(2)$ and $w_j \in \mathbb{R}^m, |w_j| \leq 1, j = 1, 2$ and define $w = w_1 - w_2$. Then we obtain from (6.17)

$$(6.24) \quad \begin{aligned} |\rho^{[f]}(\gamma, w_1, x) - \rho^{[f]}(\gamma, w_2, x)| &= \left| \int_0^1 Df(a(\gamma)u_*(x) + w_2 + tw) - Df(u_*(x)) dt w \right| \\ &\leq M_2 (|a(\gamma)u_*(x) - u_*(x)| + \max(|w_1|, |w_2|)) |w|. \end{aligned}$$

Similarly,

$$(6.25) \quad |D_w \rho^{[f]}(\gamma, w_1, x) - D_w \rho^{[f]}(\gamma, w_2, x)| \leq M_2 |w|$$

and

$$(6.26) \quad |D_w^2 \rho^{[f]}(\gamma, w_1, x)| \leq M_2.$$

Consider now $w_1, w_2 \in W_0$, let $w = w_1 - w_2$ and obtain from (6.24), (6.14) and Lemma 6.1:

$$\begin{aligned} & \|r^{[f]}(\gamma, w_1) - r^{[f]}(\gamma, w_2)\|^2 \\ &= \int |r^{[f]}(\gamma, w_1) - r^{[f]}(\gamma, w_2)|^2 dx \\ &\leq M_2^2 (\|a(\gamma)u_* - u_*\|_\infty + \max(\|w_1\|_\infty, \|w_2\|_\infty))^2 \int |w(x)|^2 dx \\ &\leq M_2^2 C_e^2 (\|a(\gamma)u_* - u_*\|_{H^2} + \max(\|w_1\|_{H^2}, \|w_2\|_{H^2}))^2 \|w\|^2 \\ &\leq M_2^2 C_e^2 C_a^2 (d(\gamma, \mathbb{1}) + \max(\|w_1\|_{H^2}, \|w_2\|_{H^2}))^2 \|w\|_{H^2}^2. \end{aligned}$$

We estimate the derivative

$$\begin{aligned} & D(r^{[f]}(\gamma, w_1) - r^{[f]}(\gamma, w_2)) \\ &= (D_w \rho^{[f]}(\gamma, w_1, x) - D_w \rho^{[f]}(\gamma, w_2, x)) D w_1(x) \\ &+ D_w \rho^{[f]}(\gamma, w_1, x) (D w_1 - D w_2)(x) \\ &+ (Df(a(\gamma)u_* + w_1) - Df(a(\gamma)u_* + w_2)) D(a(\gamma)u_* - u_*)(x) \\ &+ \int_0^1 D^2 f(a(\gamma)u_* + w_2 + tw) - D^2 f(u_*) dt [D u_*, w_1 - w_2] \\ &= T_1 + T_2 + T_3 + T_4. \end{aligned}$$

Using (6.25) and Lemma 6.1 the estimates are

$$\begin{aligned} \int |T_1(x)|^2 dx &\leq M_2^2 \int |w(x)|^2 |D w_1(x)|^2 dx \\ &\leq M_2^2 C_e^2 \|w\|_{H^2}^2 \|w_1\|_{H^2}^2, \\ \int |T_2(x)|^2 dx &\leq \int |D_w \rho^{[f]}(\gamma, w_2, x)|^2 |D w(x)|^2 dx \\ &\leq M_2^2 C_e^2 \|w_2\|_{H^2}^2 \|w\|_{H^2}^2, \\ \int |T_3(x)|^2 dx &\leq M_2^2 \int |w(x)|^2 |D(a(\gamma)u_* - u_*)|^2 dx \\ &\leq M_2^2 \|w\|_\infty^2 \|a(\gamma)u_* - u_*\|_{H^2}^2 \\ &\leq M_2^2 C_e^2 C_a^2 \|w\|_{H^2}^2 d(\gamma, \mathbb{1})^2, \\ \int |T_4(x)|^2 dx &\leq \int M_3^2 (|a(\gamma)u_* - u_*| + \max(|w_1|, |w_2|))^2 |D u_*|^2 |w|^2 dx \\ &\leq M_3^2 C_e^4 \|D u_*\|_{H^2}^2 (\|a(\gamma)u_* - u_*\|_{H^2} + \max(\|w_1\|_{H^2}, \|w_2\|_{H^2}))^2 \|w\|^2 \\ &\leq (M_3 C_e^2 C_a (d(\gamma, \mathbb{1}) + \max(\|w_1\|_{H^2}, \|w_2\|_{H^2})) \|w\|_{H^2})^2. \end{aligned}$$

We evaluate the second derivative

$$\begin{aligned}
& D^2(r^{[f]}(\gamma, w_1)) \\
&= D_w^2 \rho^{[f]}(\gamma, w_1, x)[Dw_1, Dw_1] + D_w \rho^{[f]}(\gamma, w_1, x)D^2 w_1 \\
&+ 2D_x D_w \rho^{[f]}(\gamma, w_1, x)[Dw_1, I] + D_x^2 \rho^{[f]}(\gamma, w_1, x) \\
&= T_1(w_1) + T_2(w_1) + T_3(w_1) + T_4(w_1).
\end{aligned}$$

For the first term we use the Gagliardo–Nirenberg estimate

$$(6.27) \quad \int_{\mathbb{R}^2} |Du|^4 dx \leq C_G \|u\| \|D^2 u\|^3 \leq C_G \|u\|_{H^2}^4 \quad \text{for } u \in H^2.$$

With the abbreviation $\cdot_j = (a(\gamma)u_* + w_j)(x)$, $j = 1, 2$ we have

$$\begin{aligned}
T_1(w_1) - T_1(w_2) &= D^2 f(\cdot_1)[Dw, Dw_1] + D^2 f(\cdot_1)[Dw_2, Dw] \\
&+ (D^2 f(\cdot_1) - D^2 f(\cdot_2))[Dw_2, Dw_2] \\
&= T_{11} + T_{12} + T_{13},
\end{aligned}$$

$$\begin{aligned}
\int |T_{11}(x)|^2 dx &\leq M_2^2 \int |Dw|^2 |Dw_1|^2 dx \\
&\leq M_2^2 \left(\int |Dw|^4 dx \int |Dw_1|^4 dx \right)^{\frac{1}{2}} \\
&\leq M_2^2 C_G \|w\|_{H^2}^2 \|w_1\|_{H^2}^2.
\end{aligned}$$

The estimate of T_{12} is analogous and for T_{13} we have

$$\begin{aligned}
\int |T_{13}(x)|^2 dx &\leq M_3^2 \|w\|_{\infty}^2 \int |Dw_2|^2 dx \\
&\leq M_3^2 C_e^2 C_G \|w\|_{H^2}^2 \|w_2\|_{H^2}^2.
\end{aligned}$$

Setting $\cdot_j = (\gamma, w_j(x), x)$, $j = 1, 2$ we find with (6.25)

$$\begin{aligned}
T_2(w_1) - T_2(w_2) &= D_w \rho^{[f]}(\cdot_1)D^2 w + (D_w \rho^{[f]}(\cdot_1) - D_w \rho^{[f]}(\cdot_2))D^2 w_2 \\
&= T_{21} + T_{22},
\end{aligned}$$

$$\begin{aligned}
\int |T_{21}(x)|^2 dx &\leq M_2^2 (\|a(\gamma)u_* - u_*\|_{\infty} + \|w_1\|_{H^2})^2 \int \|D^2 w\|^2 dx \\
&\leq M_2^2 C_e^2 C_a^2 (d(\gamma, 1) + \|w_1\|_{H^2})^2 \|w\|_{H^2}^2,
\end{aligned}$$

$$\begin{aligned}
\int |T_{22}(x)|^2 dx &\leq M_2^2 \int |w(x)|^2 |Dw_2(x)|^2 dx \\
&\leq M_2^2 C_e^2 \|w\|_{H^2}^2 \|w_2\|_{H^2}^2.
\end{aligned}$$

With $t_j = (a(\gamma)u_* + tw_j)(x)$, $j = 1, 2$ we write the T_3 terms as follows

$$\begin{aligned}
& T_3(w_1) - T_3(w_2) \\
&= D_x(Df(\cdot_1) - Df(u_*))[Dw_1, I] - D_x(Df(\cdot_2) - Df(u_*))[Dw_2, I] \\
&= \int_0^1 D^3 f(t_1) dt [Da(\gamma)u_*, w_1, Dw_1] \\
&\quad - \int_0^1 D^3 f(t_2) dt [Da(\gamma)u_*, w_2, Dw_2].
\end{aligned}$$

Telescoping in the usual way and using $f \in C^4$ and $\|Da(\gamma)u_*\|_\infty = \|Du_*\|_\infty \leq C_e \|Du_*\|_{H^2} \leq C$ (cf. Lemma 6.1) we can estimate

$$\int |T_3(w_1) - T_3(w_2)|^2 dx \leq C (\|w_1\|_\infty^2 \|w\|_{H^2}^2 + \|w\|_{H^2}^2 \|w_2\|_{H^2}^2 + \|w\|_\infty^2 \|w_2\|_\infty^2 \|w_2\|_{H^2}^2).$$

Finally, we have

$$\begin{aligned} T_4(w_1) &= \int_0^1 D^3(t_1) dt [Da(\gamma)u_*, w_1, D(a(\gamma)u_* - u_*)] \\ &+ \int_0^1 D^2 f(t_1) dt [w_1, D^2(a(\gamma)u_* - u_*)] \\ &+ \int_0^1 D^3 f(t_1) dt [D(a(\gamma)u_* - u_*), Du_*, w_1] \\ &+ \int_0^1 (D^3 f(t_1) - D^3 f(u_*)) dt [Du_*, Du_*, w_1] \\ &+ \int_0^1 (D^2 f(t_1) - D^2 f(u_*)) dt [D^2 u_*, w_1] \\ &= T_{41} + T_{42} + T_{43} + T_{44} + T_{45}. \end{aligned}$$

All terms $T_{4j}(w_1) - T_{4j}(w_2), j = 1, \dots, 5$ can be handled by telescoping as before. Note that w -differences are estimated by $\|w_1 - w_2\|_\infty \leq C_e \|w_1 - w_2\|_{H^2}$ whereas $D^j(a(\gamma)u_* - u_*), j = 1, 2$ stays under the integral so that Lemma 6.1 applies. We do not give the details.

Note that the small Lipschitz estimate (6.18) transfers directly from $r^{[f]}$ to $r^{[w]}$. By (2.36) we have for $w \in H_{EucL}^2$

$$(6.28) \quad r^{[w]}(\gamma, w) = (P + P(Du_*(\gamma \cdot) - D_\phi u_*(\gamma \cdot)) S(\gamma)^{-1} (I - P)) r^{[f]}(\gamma, w),$$

and the assertion follows from the uniform bound of $\|Da(\gamma)u_*\|_{H^2}$ and of $S(\gamma)^{-1}$ for $\gamma \in U_0$, see (2.34) and Lemma 6.1.

Since $r^{[\gamma]}$ from (2.35) is of a similar structure as $r^{[f]}$ we get a Lipschitz estimate for $r^{[\gamma]}$ with respect to w as well.

Finally, we obtain a Lipschitz estimate for $\rho^{[f]}$ with respect to γ from Lemma 6.1

$$\begin{aligned} &|\rho^{[f]}(\gamma_1, w, x) - \rho^{[f]}(\gamma_2, w, x)| \\ &= \left| \int_0^1 Df(a(\gamma_1)u_*(x) + tw(x)) - Df(a(\gamma_2)u_*(x) + tw(x)) dt \right| \\ &\leq M_2 |a(\gamma_1)u_*(x) - a(\gamma_2)u_*(x)| |w| \\ &\leq M_2 C_e \|a(\gamma_1)u_* - a(\gamma_2)u_*\|_{H^2} |w| \leq M_2 C_e C_a d(\gamma_1, \gamma_2) |w|. \end{aligned}$$

Since $S(\gamma)^{-1}$ is Lipschitz bounded this leads to (6.22) via equations (6.28) and (2.35). □

6.4. Gronwall Estimate. The Gronwall-type estimate tailored to our needs is the following.

LEMMA 6.3. *Let $\varepsilon, C, \tilde{C}, \tilde{\beta}$ be positive constants such that $C \geq 1$ and*

$$(6.29) \quad \varepsilon \leq \frac{\tilde{\beta}}{16\tilde{C}C},$$

and let $\varphi : [0, t_\infty) \mapsto [0, \infty)$, $0 < t_\infty \leq \infty$, be a continuous function satisfying for $0 \leq t < t_\infty$

$$(6.30) \quad \varphi(t) \leq C\varepsilon e^{-\tilde{\beta}t} + \tilde{C} \int_0^t e^{-\tilde{\beta}(t-\tau)} (\varphi^2(\tau) + \varepsilon\varphi(\tau)) d\tau.$$

Then φ satisfies the exponential bound

$$(6.31) \quad \varphi(t) < 2C\varepsilon e^{-\frac{3\tilde{\beta}t}{4}}, \quad 0 \leq t < t_\infty.$$

PROOF. First note that (6.31) holds at $t = 0$. If (6.31) does not hold, let $T \in (0, t_\infty)$ denote the smallest time at which equality occurs. Then we have

$$\begin{aligned} 2C\varepsilon \exp\left(-\frac{3\tilde{\beta}T}{4}\right) &= \varphi(T) \\ &\leq C\varepsilon e^{-\tilde{\beta}T} + \tilde{C} \int_0^T e^{-\tilde{\beta}(T-\tau)} (\varphi^2(\tau) + \varepsilon\varphi(\tau)) d\tau \\ &\leq C\varepsilon e^{-\tilde{\beta}T} + 2C\tilde{C}\varepsilon^2 e^{-\tilde{\beta}T} \int_0^T 2C \exp\left(-\frac{\tilde{\beta}\tau}{2}\right) + \exp\left(\frac{\tilde{\beta}\tau}{4}\right) d\tau \\ &\leq C\varepsilon e^{-\tilde{\beta}T} + 2C\tilde{C}\varepsilon^2 \frac{4}{\tilde{\beta}} \left(C \exp(-\tilde{\beta}T) + \exp\left(-\frac{3\tilde{\beta}T}{4}\right) \right) \\ &< 2C\varepsilon \exp\left(-\frac{3\tilde{\beta}T}{4}\right) \left(\frac{1}{2} + \frac{8C\tilde{C}\varepsilon}{\tilde{\beta}} \right). \end{aligned}$$

This estimate contradicts (6.29), and the lemma is proved. \square

6.5. Proof of Theorem 1.1. Let $\rho_0 > 0$ and $\varepsilon_0 > 0$ denote constants specifying the neighborhoods in Lemma 6.2. For the initial value v_0 from (1.21) we assume

$$(6.32) \quad \|v_0\|_{H^2} \leq \varepsilon_1,$$

and we impose several restrictions on ε_1 in the sequel. By Lemma 2.5 and Lemma 6.1 the initial values (6.6),(6.5) satisfy for sufficiently small ε_1

$$(6.33) \quad d(\gamma_0, \mathbb{1}) = d(\Gamma^{-1}(I - P)v_0, \Gamma^{-1}(0)) \leq C_\Gamma \|I - P\|_{H^2 \mapsto H^2} \varepsilon_1 \leq \rho_0,$$

$$\|w_0\|_{H^2} \leq \|v_0\|_{H^2} + \|u_* - a(\gamma_0)u_*\|_{H^2} \leq \varepsilon_1 + C_a d(\gamma_0, \mathbb{1}) \leq (1 + \hat{C}C_a)\varepsilon_1 \leq \varepsilon_0.$$

where $\hat{C} = C_\Gamma \|I - P\|_{H^2 \mapsto H^2}$. Then Lemma 6.2 applies. We also introduce the constants (cf. (2.34))

$$(6.34) \quad C_g = C_S \|I - P\|_{H^2 \mapsto H^2}, \quad \text{where } C_S = \sup_{\gamma \in U_0} |S(\gamma)^{-1}|.$$

As usual, the Lipschitz bound (6.22) ensures the existence of a local solution in $C([0, t_0), H^2)$ for the system (6.4),(6.5),(6.6),(6.7). We use (6.3) with $\tilde{\beta} = \frac{4}{3}\beta$ and $C_W = C_W(\tilde{\beta})$. Let $C = C_W C_1 \max(\hat{C}, 1)$, where C_1 is from Lemma 6.2, and impose the following conditions on ε_1 in (6.32)

$$(6.35) \quad \varepsilon_1 \leq \min \left(\frac{\beta}{12C_1 C_W C}, \frac{\varepsilon_0}{4C}, \frac{\beta\rho_0}{2(\hat{C}\beta + 2C_g C\varepsilon_0(1 + 2C))} \right).$$

Let $[0, t_\infty)$ be the maximal domain of existence for the solution $(w(t), \gamma(t))$ in $W_0 \times U_0$, cf. Lemma 6.2. From (6.4) and (6.3) we have the estimate

$$\|w(t)\|_{H^2} \leq C_W e^{-t\tilde{\beta}} \|w_0\|_{H^2} + C_W C_1 \int_0^t e^{-\tilde{\beta}(t-\tau)} (\hat{C}\varepsilon_1 + \|w(\tau)\|_{H^2}) \|w(\tau)\|_{H^2} d\tau.$$

Lemma 6.3 applies with $\varepsilon = \varepsilon_1$, $\varphi(t) = \|w(t)\|_{H^2}$, since condition (6.29) follows from (6.35). From (6.31) we obtain the estimate

$$(6.36) \quad \|w(t)\|_{H^2} \leq 2C\varepsilon_1 e^{-\beta t}, \quad 0 \leq t < t_\infty.$$

The condition (6.35) guarantees that $w(t)$ stays in an $\frac{\varepsilon_0}{2}$ ball in H^2 and thus stays away from the boundary of W_0 . With (6.36) and (6.19) we obtain from (6.7) the estimate

$$\begin{aligned} d(\gamma(t), \mathbb{1}) &\leq d(e^{tE_c}\gamma_0, \mathbb{1}) + \int_0^t |r^{[\gamma]}(\gamma(\tau), w(\tau))| d\tau \\ &\leq d(\gamma_0, \mathbb{1}) + C_g \int_0^t \|r^{[f]}(\gamma(\tau), w(\tau))\|_{H^2} d\tau \\ &\leq \hat{C}\varepsilon_1 + C_g(\varepsilon_0 + 2C\varepsilon_1) \int_0^t 2C\varepsilon_1 e^{-\beta\tau} d\tau \\ &\leq \varepsilon_1(\hat{C} + \frac{2}{\beta}C_g C\varepsilon_0(1 + 2C)) \leq \frac{\rho_0}{2}, \end{aligned}$$

where the last inequality is a consequence of (6.35). Thus we conclude that $t_\infty = \infty$, and the exponential estimate (6.36) holds for all $t \geq 0$. In fact, for any v_0 satisfying (6.32) we can repeat the a-priori estimate above with $\varepsilon_2 = \|v_0\|$ instead of ε_1 . With the same constants we then find

$$(6.37) \quad \|w(t)\|_{H^2} \leq 2C\|v_0\|_{H^2} e^{-\beta t}, \quad 0 \leq t < \infty,$$

which proves the w -estimate in Theorem 1.1.

The smallness estimate for $\gamma_0 = \gamma(0) = (\eta_0, \theta_0)$ follows directly from (6.33).

We define the asymptotic phase $\gamma_\infty = (\eta_\infty, \theta_\infty)$ by

$$(6.38) \quad \gamma_\infty = \gamma_0 + \int_0^\infty e^{-\tau E_c} r^{[\gamma]}(\gamma(\tau), w(\tau)) d\tau.$$

Note that the integral exists because of $|e^{-\tau E_c}| = 1$ and the exponential decay shown above,

$$(6.39) \quad |r^{[\gamma]}(\gamma(\tau), w(\tau))| \leq C_\gamma e^{-\beta\tau}, \quad C_\gamma = C_g \varepsilon_0(1 + 2C)\varepsilon_1.$$

This leads to

$$\begin{aligned} d(\gamma_\infty, e^{-tE_c}\gamma(t)) &= d((\eta_\infty, \theta_\infty), (R_{ct}\eta(t), \theta(t))) \\ &\leq d(\gamma_\infty, \gamma_0 + \int_0^t e^{-\tau E_c} r^{[\gamma]}(\gamma(\tau), w(\tau)) d\tau) \\ &\leq \left| \int_t^\infty e^{-\tau E_c} r^{[\gamma]}(\gamma(\tau), w(\tau)) d\tau \right| \\ &\leq C_\gamma e^{-\beta t}. \end{aligned}$$

As before, the value ε_1 that appears in C_γ can be replaced by $\|v_0\|_{H^2}$, and this proves the final estimate in Theorem 1.1.

7. Existence and Estimate of $D_\phi u$

In this section we denote the L^2 -norm on $L^2(\mathbb{R}^2, \mathbb{R}^m)$ by $\|\cdot\|$. We assume $f \in C^\infty$ to avoid counting of derivatives. The arguments in this section are only needed to show existence of and bounds for $D_\phi u$.

The results of Section 6 yield existence of a solution $u(x, t)$ in

$$C^1([0, \infty), L^2) \cap C([0, \infty), H^2)$$

of the integral equation

$$u(t) = e^{t\mathcal{L}_0}u_0 + \int_0^t e^{(t-\tau)\mathcal{L}_0} f(u(\tau)) d\tau$$

if

$$u_0 = u_* + v_0 \in H^2$$

and $\|v_0\|_{H^2}$ is small.

THEOREM 7.1. *If $u_0 \in H^2_{Eucl}$ then $u(t) \in H^2_{Eucl}$ for all $t \geq 0$ and*

$$(7.1) \quad \|D_\phi u(t)\| \leq Ce^{\gamma t} \|D_\phi u_0\|$$

where C and γ are independent of t .

PROOF. 1. We know that $\mathcal{L}_0 : H^2_{Eucl} \subset L^2 \rightarrow L^2$ is closed and, therefore, using properties of the resolvent,

$$D(\mathcal{L}_0) = H^2_{Eucl} .$$

It follows that $e^{t\mathcal{L}_0} : H^2_{Eucl} \rightarrow H^2_{Eucl}$ and

$$\|e^{t\mathcal{L}_0}v_0\|_{H^2_{Eucl}} \leq Ce^{\gamma t} \|v_0\|_{H^2_{Eucl}} \quad \text{for } v_0 \in H^2_{Eucl} .$$

2. Let $r \in C([0, \infty), H^2_{Eucl})$ and let $v_0 \in H^2_{Eucl}$. Set

$$v(t) = e^{t\mathcal{L}_0}v_0 + \int_0^t e^{(t-\tau)\mathcal{L}_0} r(\tau) d\tau .$$

Then $v \in C([0, \infty), H^2_{Eucl})$ and

$$(7.2) \quad \|v(t)\|_{H^2_{Eucl}} \leq Ce^{\gamma t} \|v_0\|_{H^2_{Eucl}} + C \int_0^t e^{\gamma(t-\tau)} \|r(\tau)\|_{H^2_{Eucl}} d\tau .$$

3. Let $|f'(w)| \leq Q_0$ for all $w \in \mathbb{R}^m$. Let r be as above. We have

$$\|D_\phi f(r(t))\| \leq Q_0 \|D_\phi r\| .$$

Define

$$v(t) = e^{t\mathcal{L}_0} + \int_0^t e^{(t-\tau)\mathcal{L}_0} f(r(\tau)) d\tau .$$

Obtain the estimate

$$(7.3) \quad \|D_\phi v(t)\| \leq C e^{\gamma t} \|D_\phi v_0\| + C Q_0 \int_0^t e^{\gamma(t-\tau)} \|r(\tau)\| d\tau .$$

4. For $u_0 \in H_{E_{ucl}}^2$ define the sequence u^n by

$$\begin{aligned} u^0(t) &= e^{t\mathcal{L}_0} u_0 \\ u^{n+1}(t) &= e^{t\mathcal{L}_0} u_0 + \int_0^t e^{(t-\tau)\mathcal{L}_0} f(u^n(\tau)) d\tau \end{aligned}$$

Fix a time interval $0 < t_1 \leq t \leq t_2$. Parabolic smoothing estimates hold and one obtains

$$u^n \in C^\infty(\mathbb{R}^2 \times [t_1, t_2])$$

and the sequence u^n is uniformly smooth on $\mathbb{R}^2 \times [t_1, t_2]$. This means that all derivatives are bounded independently of n . (This follows from bounds for $\|u^n(t)\|_{H^k}$ for all k . Time derivatives and mixed derivatives can be expressed by space derivatives using the differential equation $u_t^{n+1} = \mathcal{L}_0 u^{n+1} + f(u^n)$.)

Iterating the estimate (7.3) one obtains

$$(7.4) \quad \|D_\phi u^n(t)\| \leq C_0 e^{\gamma t} \|D_\phi u_0\| .$$

5. Fix a compact region

$$\Omega = B_R \times [t_1, t_2]$$

in which the sequence u^n is uniformly smooth. By Arzela–Ascoli we obtain a smooth function u on Ω and a subsequence of u^n so that (for any fixed K)

$$\max_{(x,t) \in \Omega} |D^\alpha u^n(x,t) - D^\alpha u(x,t)| \rightarrow 0 \quad \text{as } n \rightarrow \infty, \quad n \in \mathbb{N}_1, \quad |\alpha| \leq K .$$

Here D^α is a space-time derivative. (We do not know yet that this limit u is the solution of the integral equation constructed above, but will show this below.)

A contraction argument in a weak norm (see below) will show that any possible limit of any subsequence of u^n converges to the same limit on Ω . Therefore, all derivatives of the whole sequence u^n converge in maximum norm on Ω to the corresponding derivatives of u . One obtains that $u \in C^\infty(\mathbb{R}^2 \times (0, \infty))$.

One also finds that

$$\max_{(x,t) \in \Omega} |D_\phi u^n(x,t) - D_\phi u(x,t)| \rightarrow 0 \quad \text{as } n \rightarrow \infty .$$

6. From (7.4) we have

$$\int_{B_R} |D_\phi u^n(x,t)|^2 dx \leq C_0^2 e^{2\gamma t} \|D_\phi u_0\|^2$$

and find for $n \rightarrow \infty$:

$$\int_{B_R} |D_\phi u(x,t)|^2 dx \leq C_0^2 e^{2\gamma t} \|D_\phi u_0\|^2 .$$

Now let $R \rightarrow \infty$ to obtain

$$(7.5) \quad \|D_\phi u(t)\| \leq C_0 e^{\gamma t} \|D_\phi u_0\| .$$

7. The sequence u^n satisfies

$$u_t^{n+1} = \mathcal{L}_0 u^{n+1} + f(u^n), \quad u^n(x, 0) = u_0(x) .$$

All derivatives converge pointwise on $\mathbb{R}^2 \times (0, \infty)$ to the corresponding derivatives of u . Therefore,

$$u_t = \mathcal{L}_0 u + f(u), \quad u(x, 0) = u_0(x) .$$

This implies that the function u which is constructed here as the limit of u^n agrees with the solution constructed in Section 6.

8. The contraction argument is as follows. For

$$\delta^n = u^{n+1} - u^n$$

obtain

$$\delta^{n+1} = \int_0^t e^{(t-\tau)\mathcal{L}_0} M_n(x, t) \delta^n(\tau) d\tau$$

with

$$|M_n(x, t)| \leq Q_0 .$$

Therefore,

$$\max_{0 \leq \tau \leq t} \|\delta^{n+1}(\tau)\| \leq C_1 t \max_{0 \leq \tau \leq t} \|\delta^n(\tau)\| .$$

If $C_1 t_2 \leq \frac{1}{2}$ a geometric–sum argument shows that any limit of any subsequence of the u^n is unique on $[t_1, t_2]$ for $0 < t_1 < t_2$. One can then restart the argument at t_2 . The constant C_1 does not change. □

8. The Quintic–Cubic Ginzburg–Landau Equation

Consider the quintic–cubic Ginzburg Landau equation (QCGL)

$$(8.1) \quad u_t = \alpha \Delta u + u(\mu + \beta|u|^2 + \gamma|u|^4)$$

where $x \in \mathbb{R}^2$, $u(x, t) \in \mathbb{C}$ and $\mu \in \mathbb{R}, \alpha, \beta, \gamma \in \mathbb{C}$. Since u is complex valued the equation corresponds to a real system with two variables. In Section 8.2 we identify the essential spectrum of the differential operator obtained by linearizing about a spinning soliton. The result is consistent with the numerical findings in Section 8.1.

8.1. Spinning Solitons for the QCGL Equation. Spinning solitons are solutions that rotate at constant speed and converge to $u_\infty = 0$ as $|x| \rightarrow \infty$. Such solutions are described in [6],[7], for example. We use the parameters

$$(8.2) \quad \alpha = \frac{1}{2}(1 + i), \quad \beta = 2.5 + i, \quad \gamma = -1 - 0.1i, \quad \mu = -\frac{1}{2}.$$

For the numerical computation we used Comsol Multiphysics™[5]. The problem is discretized on balls $B_R(0) = \{x \in \mathbb{R}^2 : |x| \leq R\}$ with Neumann boundary conditions and piecewise linear finite elements of maximum diameter h_{\max} . The

initial solution is obtained from the freezing approach in [3]. Then the following boundary value problem is solved (cf. the time dependent equation (1.7)):

$$(8.3) \quad \begin{aligned} 0 &= A\Delta u + f(u) + cD_\phi u + \eta_1 D_1 u + \eta_2 D_2 u \quad \text{in } B_R, \\ 0 &= \frac{\partial u}{\partial n} \quad \text{on } \partial B_R. \end{aligned}$$

Here the parameter values c, η_1, η_2 are included as additional unknowns and three phase conditions are added in order obtain a well-posed boundary value problem accessible to the package [5]. Real and imaginary parts of the solution are shown in Figure 1.

With the numerical solution at hand, the same code is used to compute a prescribed number $neig$ of eigenvalues of the linearized finite element operator. The code uses the package ARPACK with a prescribed real shift $\sigma \in \mathbb{R}$ and is expected to give the $neig$ eigenvalues closest to σ .

We have $B_\infty = \mu I$, which satisfies Assumption 2 since $\mu < 0$. Assumptions 3 and 4 will be checked numerically. Our reference discretization uses the values

$$(8.4) \quad R = 30, h_{max} = 0.25, neig = 400, \sigma = 3$$

which leads to a matrix eigenvalue problem with about 10^5 eigenvalues. The spectral picture corresponding to this choice is Figure 2 showing $neig = 400$ eigenvalues close to $\sigma = 3$.

We observe a zig-zag type cluster of eigenvalues which one expects to correspond to essential spectrum. In fact, the structure will be explained by Theorem 8.1 below.

In addition, the three eigenvalues $\pm ic$ and 0 on the imaginary axis are clearly visible in Figure 2.

Moreover, Figure 2 suggests that there are eight additional complex conjugate pairs of eigenvalues lying between the imaginary axis and the zig-zag structure. For these eight pairs we have boxed the 8 eigenvalues with positive imaginary part. Note that one of the boxed eigenvalues near the top is rather close to the zig-zag structure, but does not belong to it. The eigenvalues $\pm ic$ and 0 are also boxed. In addition, we have boxed two (numerical) eigenvalues appearing near the center at two tips of the zig-zag structure.

Figure 3 plots the real parts of the eigenfunctions corresponding to the 12 boxed eigenvalues. Note that the eigenfunctions numbered 1 to 10 are localized; these eigenfunctions correspond to the eigenvalues 0 and ic as well as to the eight isolated eigenvalues not belonging to the zig-zag structure. The eigenfunctions numbered 11 and 12 correspond to the two boxed eigenvalues at the tips of the zig-zag structure; as expected, these eigenfunctions are not localized since they correspond to essential spectrum.

To validate our findings we have varied two parameters in the reference configuration (8.4):

- (1) Decrease radius to $R = 20$. The spectral picture is Figure 4 (left); the eigenfunctions are similar to those in Figure 3 (not shown).
- (2) Coarsen the grid to $h_{max} = 0.5$. The spectral picture is Figure 4 (right); the eigenfunctions are similar to those in Figure 3 (not shown).

As already mentioned, the zig-zag structure in Figure 2 corresponds to essential spectrum of \mathcal{L} . Therefore, our tests confirm that there are eight pairs of isolated eigenvalues between the essential spectrum and the imaginary axis. Since the corresponding eigenfunctions are localized and since there are no unstable eigenvalues,

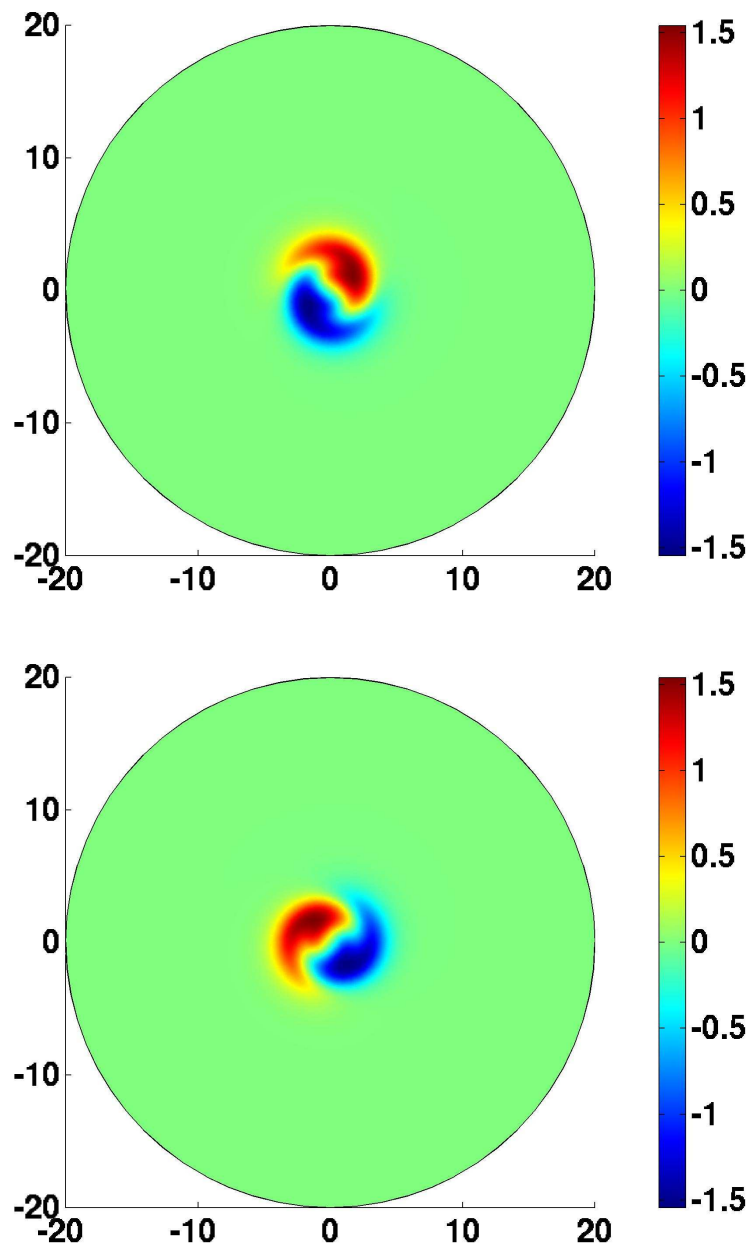


FIGURE 1. Real and imaginary part of spinning solitons in the QCGL-system

Assumptions 3 and 4 are confirmed. As one expects, variation of the size of the domain has a strong impact on the clusters that approximate the essential spectrum while refining the mesh does not change the clusters very much.

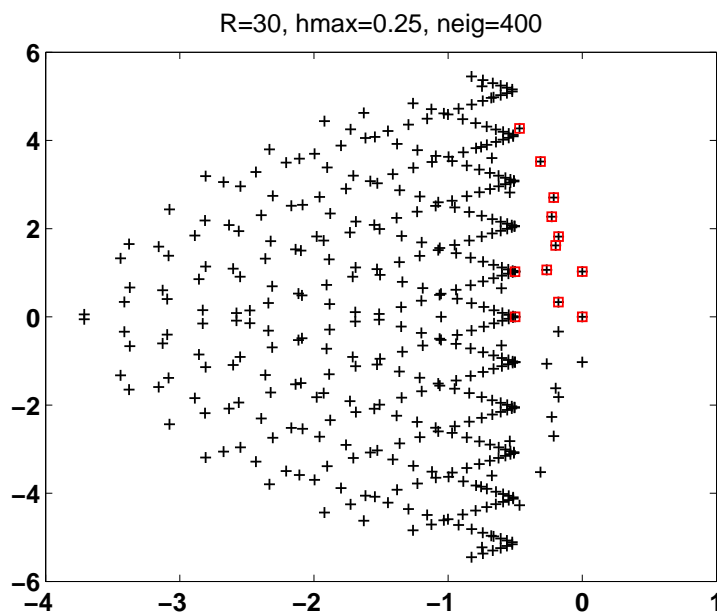


FIGURE 2. Spectrum of linearization about spinning soliton

On the other hand, looking at numerical values (not shown) one finds that convergence towards the isolated eigenvalues is best observed when the mesh-size is varied.

We refer to the work by Sandstede and Scheel [17],[14] on absolute spectra, which is relevant when studying perturbations such as truncation to a bounded domain.

For the three eigenvalues $\pm ic$ and 0 on the imaginary axis we have also compared the numerical eigenfunctions $\varphi_{j,h}$ with the eigenfunctions $D_1 u_* \pm iD_2 u_*$ and $\phi_3 = D_\phi u_*$ given by Lemma 2.3. Here we have used the computed numerical approximation for u_* (as a solution of (8.3)) and have evaluated its derivatives numerically. The resulting errors are

$$\begin{aligned} \|\varphi_{1,h} - \varphi_1\|_{L^2} &= 8.6510^{-3} \\ \inf_{\theta \in [0, 2\pi]} \|\varphi_2 - e^{i\theta}(\varphi_{2,h} + i\varphi_{3,h})\|_{L^2} &= 4.3910^{-3}. \end{aligned}$$

In view of the tolerances used, these results give satisfactory tests.

Remark : We note that equation (8.1) happens to have an extra S^1 symmetry given by

$$(8.5) \quad F(e^{i\theta}u) = e^{i\theta}F(u), \quad \theta \in S^1,$$

where F denotes the right hand side of (8.1). Numerical computations suggest that the rotating wave u_* satisfies $u_*(R_\theta x) = e^{i\theta}u_*(x)$. Then u_* is also a relative equilibrium with respect to the group action of $G = S^1 \times \mathbb{R}^2$ given by (cf. (1.11))

$$(a(\eta, \theta)u)(x) = e^{-i\theta}u(x - \eta).$$

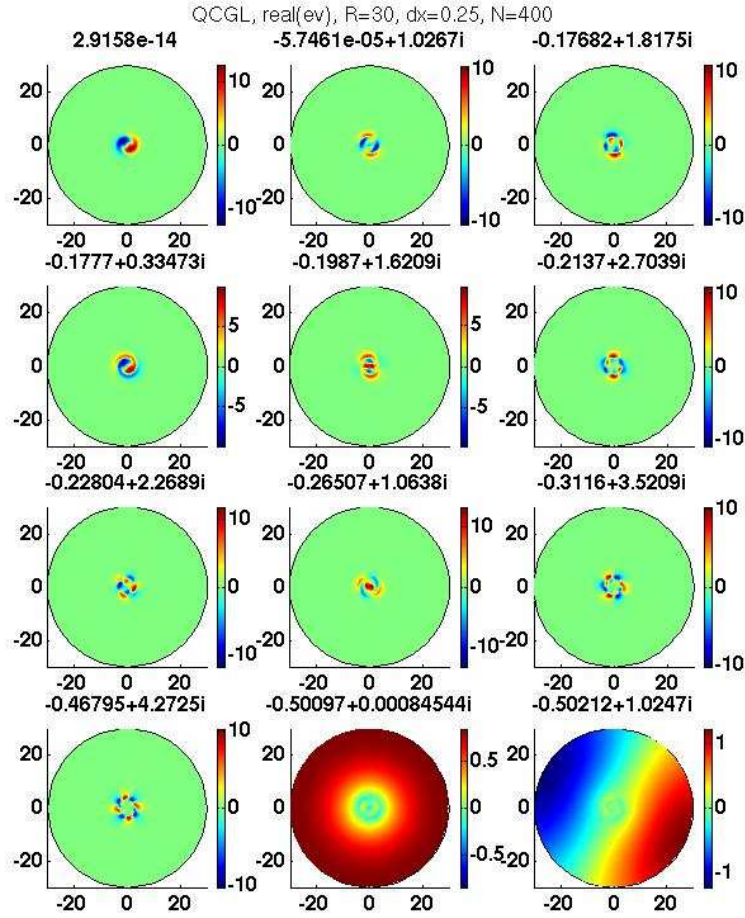


FIGURE 3. Eigenvalues and eigenvectors corresponding to boxes in Figure 2, the first two correspond to 0 and ic , the next eight to isolated and stable eigenvalues, the last two to spectral values at the tip of the zig-zag structure

This leads to a simpler linearization where D_ϕ is not present and, therefore, a simpler stability analysis is possible than provided by our Theorem. However, this special situation can be easily avoided by destroying the symmetry (8.5) in (8.1). For example, we can perturb the complex factor γ in the two-dimensional real version of (8.1) so that it no longer corresponds to multiplication by a complex number. Numerical experiments show that the spinning solitons and the structure of the spectrum persist for the modified system.

8.2. On the Essential Spectrum of \mathcal{L} . We use the following terminology ([11, Ch.5]):

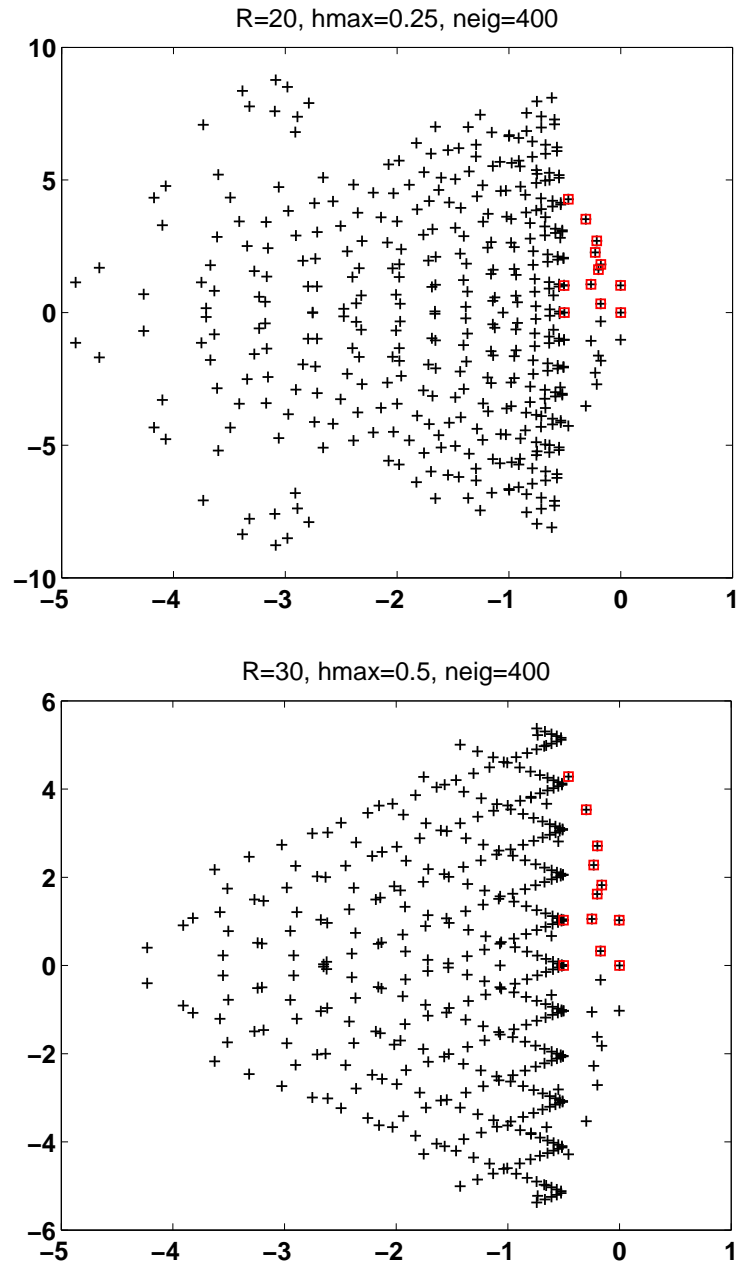


FIGURE 4. Spectrum of spinning soliton in the QCGL-system on a smaller ball ($R = 20$, left) and for a coarser grid ($\Delta x = 0.5$, right)

DEFINITION 8.1. Let X denote a complex Banach space and let $A : D(A) \subset X \rightarrow X$ denote a closed, densely defined linear operator. A point $\lambda \in \mathbb{C}$ is in the

resolvent set of A if $A - \lambda : D(A) \rightarrow X$ is 1-1, onto, and $(A - \lambda)^{-1}$ is a bounded operator on X . An eigenvalue λ_0 of A is called isolated if for some $\varepsilon > 0$ all λ with $0 < |\lambda_0 - \lambda| < \varepsilon$ belong to the resolvent set of A . The multiplicity of the eigenvalue λ_0 is the dimension of the algebraic eigenspace $\{u \in X : (A - \lambda_0)^k u = 0 \text{ for some } k \in \mathbb{N}\}$. A point $\lambda \in \mathbb{C}$ is a normal point of A if either λ is in the resolvent set of A or λ is an isolate eigenvalue of A of finite multiplicity. All points of the complex plane which are not normal points form the essential spectrum of A , denote $\sigma_{ess}(A)$.

Consider the linear operator \mathcal{L} in (1.17) under the assumptions of Section 1. A part of the spectrum of \mathcal{L} can be determined in terms of the constant matrices A and B_∞ . To show this, we use polar coordinates and write

$$\mathcal{L}u = A(u_{rr} + \frac{1}{r}u_r + \frac{1}{r^2}u_{\phi\phi}) + cu_\phi + (B_\infty + B_\delta(r, \phi))u$$

where $B_\delta = B - B_\infty$, thus (using Assumption 1),

$$\eta_R := \sup_{r \geq R} \max_{\phi} |B_\delta(r, \phi)| \rightarrow 0 \text{ as } R \rightarrow \infty .$$

First neglect the $\mathcal{O}(1/r)$ terms and the term $B_\delta u$ in $\mathcal{L}u$ and consider the simplified operator

$$\mathcal{L}^{sim}u = Au_{rr} + cu_\phi + B_\infty u .$$

If

$$(8.6) \quad u(r, \phi) = e^{in\phi} e^{i\kappa r} \hat{u}$$

with

$$(8.7) \quad n \in \mathbb{Z}, \quad \kappa \in \mathbb{R}, \quad \hat{u} \in \mathbb{C}^m, \quad |\hat{u}| = 1 ,$$

then

$$(\mathcal{L}^{sim} - s)u = (-\kappa^2 A + inc + B_\infty - s)u .$$

Therefore, $(\mathcal{L}^{sim} - s)u = 0$ if and only if

$$(-\kappa^2 A + B_\infty)\hat{u} = (s - inc)\hat{u} .$$

This suggests the following:

THEOREM 8.1. For $\kappa \in \mathbb{R}$ let $\lambda_j(\kappa)$ denote the eigenvalues of the matrix $-\kappa^2 A + B_\infty$ for $j = 1, \dots, m$. Then the numbers

$$s = inc + \lambda_j(\kappa), \quad n \in \mathbb{Z}, \quad \kappa \in \mathbb{R}, \quad j = 1, \dots, m ,$$

belong to the essential spectrum of \mathcal{L} .

PROOF. In this proof we denote the L^2 -norm on $L^2(\mathbb{R}^2, \mathbb{C}^m)$ by $\|\cdot\|$. Assume that $(-\kappa^2 A + B_\infty)\hat{u} = \lambda_j(\kappa)\hat{u}$, $|\hat{u}| = 1$, and let $s = inc + \lambda_j(\kappa)$.

For large real R choose C^∞ cut-off functions $\chi_R : [0, \infty) \rightarrow [0, 1]$ with

$$\begin{aligned} \chi_R(r) &= 1 \quad \text{for } R \leq r \leq 2R , \\ \chi_R(r) &= 0 \quad \text{for } 0 \leq r \leq R-1 \quad \text{or } 2R+1 \leq r < \infty \end{aligned}$$

and derivatives bounded independently of R . Set

$$u_R(r, \phi) = \chi_R(r)u(r, \phi)$$

with $u(r, \phi)$ given in (8.6). Clearly,

$$(\mathcal{L}^{sim} - s)u_R(r, \phi) = 0$$

unless

$$(8.8) \quad R - 1 \leq r \leq R \quad \text{or} \quad 2R \leq r \leq 2R + 1 .$$

Also, in the region (8.8),

$$|(\mathcal{L}^{sim} - s)u_R(r, \phi)| \leq C$$

with C independent of R . We have

$$\|u_R\|^2 \geq 2\pi \int_R^{2R} r \, dr = 3\pi R^2$$

and

$$\|(\mathcal{L}^{sim} - s)u_R\|^2 \leq CR .$$

If we consider the operator \mathcal{L} instead of \mathcal{L}^{sim} , then

$$(\mathcal{L} - s)u_R(r, \phi) = 0 \quad \text{for} \quad r \leq R - 1 \quad \text{and} \quad r \geq 2R + 1 .$$

Furthermore,

$$|(\mathcal{L} - s)u_R(r, \phi)| \leq C \quad \text{for} \quad R - 1 \leq r \leq R \quad \text{and} \quad 2R \leq r \leq 2R + 1$$

and

$$|(\mathcal{L} - s)u_R(r, \phi)| \leq \frac{C}{r} + \eta_R \quad \text{for} \quad R \leq r \leq 2R .$$

Therefore,

$$\|(\mathcal{L} - s)u_R\|^2 \leq CR + CR^2\eta_R^2 .$$

To summarize, the function $u_R \in L^2(\mathbb{R}^2)$ satisfies

$$\|u_R\|^2 \geq 3\pi R^2 \quad \text{and} \quad \|(\mathcal{L} - s)u_R\|^2 \leq CR + CR^2\eta_R^2 .$$

If one sets $v_R = u_R/\|u_R\|$ then

$$\|(\mathcal{L} - s)v_R\|^2 \leq \frac{C}{R} + C\eta_R^2 \rightarrow 0 \quad \text{as} \quad R \rightarrow \infty .$$

Therefore, either s is an eigenvalue of \mathcal{L} or $(\mathcal{L} - s)^{-1}$ is unbounded on L^2 . If $s = inc + \lambda_j(\kappa)$ is an eigenvalue of \mathcal{L} , varying κ shows that s cannot be isolated in the sense of Definition 1. Therefore, all numbers $s = inc + \lambda_j(\kappa)$ belong to the essential spectrum of \mathcal{L} . \square

Illustration: The spectral values s of \mathcal{L} determined by Theorem 8.1 form m sequences of lines,

$$s = s(\kappa, n, j) = inc + \lambda_j(\kappa), \quad n \in \mathbb{Z}, \quad \kappa \in \mathbb{R}, \quad j = 1, \dots, m.$$

For illustration, consider the scalar case where $A = a = a_1 + ia_2$ is a complex number and $B_\infty = b_\infty$ is a real number with

$$a_1 > 0 > b_\infty.$$

Then the values s determined by Theorem 8.1 are

$$s = inc - \kappa^2(a_1 + ia_2) + b_\infty, \quad n \in \mathbb{Z}, \quad \kappa \in \mathbb{R}.$$

If $a_2 = 0$ these are horizontal half-lines parallel to the subinterval $(-\infty, b_\infty]$ of the negative real axis. If $a_2 \neq 0$ the half-lines are tilted. Since the sequence of these half-lines belongs to the spectrum of \mathcal{L} , the semi-group $e^{t\mathcal{L}}$ cannot be analytic.

Application to QCGL: Proceeding as above, we find that the half-lines

$$s = inc - \kappa^2\alpha + \mu \quad \text{and} \quad s = inc - \kappa^2\bar{\alpha} + \bar{\mu}, \quad n \in \mathbb{N}, \quad \kappa \in \mathbb{R},$$

belong to the essential spectrum of \mathcal{L} . Since $\alpha = (1 + i)/2$ is complex and $\mu \in \mathbb{R}, \mu < 0$, the above lines form a zig-zag structure to the left of the imaginary axis; this agrees with the numerical findings of Section 8.1.

Appendix A. Perturbation Theorem for C_0 -Semigroups

In this section X denotes a complex Banach space and $A : D(A) \subset X \rightarrow X$ is a densely defined linear operator generating the C_0 -Semigroup e^{tA} . For the general theory we refer to [12], [13], [15], [8], see also Definition 8.1 for the notions of spectra used in this paper.

It is known that e^{tA} may have continuous spectrum unrelated to the spectrum of A ; see, for example, Theorem 16.7.4 of [12]. This raises the possibility of exponential growth of $\|e^{tA}\|$ even if the spectrum of A lies in the left-half plane. Theorem A.1, shown below, can be used to prove that exponential growths of $\|e^{t\mathcal{L}}\|$ does *not* occur for the operator \mathcal{L} defined in (2.11). In fact, if we restrict $e^{t\mathcal{L}}$ to the space $W = \Psi^\perp$ defined in (2.17), then $\|e^{t\mathcal{L}}\|$ decays exponentially.

Recall that the (Liapunov) type of the C_0 -semigroup e^{tA} is defined by

$$(A.1) \quad \omega_A = \lim_{t \rightarrow \infty} \frac{\log \|e^{tA}\|}{t} = \inf_{t > 0} \frac{\log \|e^{tA}\|}{t}$$

and that, for any $\omega > \omega_A$, there is an equivalent norm $\|\cdot\|_\omega$ (see [15, Th.11.21]) with

$$(A.2) \quad \|e^{tA}\|_\omega \leq e^{t\omega}, \quad t \geq 0.$$

In our main result we estimate the type number of a perturbed semigroup, $e^{t(A+B)}$, in terms of the type number ω_A of A and a bound ω_+ on the real parts of the eigenvalues of $A + B$:

THEOREM A.1. *Let $A : D(A) \subset X \rightarrow X$ denote the generator of a C_0 -semigroup of type ω_A . Further, assume that $B \in L[X]$ is a linear bounded operator so that*

$$(A.3) \quad Be^{tA} \quad \text{is compact for all } t > 0.$$

Then $A + B : D(A) \rightarrow X$ generates a C_0 -semigroup on X that satisfies

$$(A.4) \quad |\sigma_{ess}(e^{A+B})| \leq e^{\omega_A}.$$

If, in addition,

$$(A.5) \quad \operatorname{Re} \lambda \leq \omega_+ \quad \text{for all eigenvalues } \lambda \in \mathbb{C} \quad \text{of } A + B,$$

then the semigroup $e^{t(A+B)}$ is of type ω_{A+B} where

$$(A.6) \quad \omega_{A+B} \leq \max(\omega_A, \omega_+).$$

The proof of Theorem A.1 uses two auxiliary results.

LEMMA A.1. Let $\exp(tA)$ be a C_0 -semigroup on X and let $M \subset X$ be precompact. Then

$$(A.7) \quad \sup_{u \in M} \|(\exp(tA) - I)u\| \rightarrow 0 \quad \text{as } t \rightarrow 0$$

PROOF. Suppose, to the contrary, that for some $\delta > 0$ we can find sequences $u_n \in M, t_n \rightarrow 0$ such that

$$\|(\exp(t_n A) - I)u_n\| \geq \delta \quad \text{for all } n \in \mathbb{N}.$$

W.l.o.g assume $\lim_{n \rightarrow \infty} u_n = \hat{u} \in X$ and choose $\hat{t} > 0$ such that $\|(\exp(tA) - I)\hat{u}\| \leq \frac{\delta}{4}$ for $0 < t \leq \hat{t}$. Then we obtain for n large

$$\begin{aligned} \|(\exp(t_n A) - I)u_n\| &\leq \|\exp(t_n A)(u_n - \hat{u})\| + \|(\exp(t_n A) - I)\hat{u}\| \\ &\quad + \|\hat{u} - u_n\| \\ &\leq (Ce^{\omega t_n} + 1) \|u_n - \hat{u}\| + \frac{\delta}{4} \leq \frac{\delta}{2}, \end{aligned}$$

a contradiction. □

For the following perturbation result see [10, Ch.1],[11, Ch.5].

THEOREM A.2. Let $T : D(T) \subset X \rightarrow X$ denote a closed linear operator and let $S : D(S) \subset X \rightarrow X$ be a linear operator such that $D(T) \subset D(S)$ and $S(\lambda_0 - T)^{-1}$ is compact for some $\lambda_0 \in \mathbb{C}$. Let $\Omega \subset \mathbb{C}$ be open connected and contain only normal points of T . Then either Ω consists entirely of normal points of $T + S$ or entirely of eigenvalues of $T + S$.

PROOF. (Theorem A.1) Let $\omega > \omega_A$ be given and, as in (A.2), select a norm $\|\cdot\|_*$ such that

$$(A.8) \quad \|\exp(tA)\|_* \leq \exp\left(\frac{1}{2}(\omega_A + \omega)t\right), \quad t \geq 0.$$

It is well known that $A + B$ is the generator of a C_0 -semigroup that is of type $\omega_{A+B} \leq \omega_A + \|B\|_*$ (cf. [15, Ch.11.2]). In particular, it follows from (A.8) that

$$(A.9) \quad \|\exp(t(A + B))\|_* \leq \exp\left(t\left(\|B\|_* + \frac{\omega_A + \omega}{2}\right)\right) \leq \exp(t(\|B\|_* + \omega)), \quad t \geq 0.$$

It remains to prove (A.6). By the variation of constants formula⁵ we have for each $u \in X$

⁵If $a_t = Aa, b_t = (A + B)b, a(0) = b(0) = u$, then $(b - a)_t = (A + B)(b - a) + Ba$ and $b(t) = a(t) + \int_0^t e^{(t-s)(A+B)} Ba(s) ds$, yielding (A.10).

$$(A.10) \quad \exp(t(A + B))u = \exp(tA)u + \int_0^t \exp((t - s)(A + B))B \exp(sA)uds.$$

We multiply by $e^{-\omega t}$ and evaluate at $t = 1$ to obtain

$$(A.11) \quad \exp(A - \omega + B)u = \exp(A - \omega)u + Ku$$

$$(A.12) \quad Ku = \int_0^1 \exp((1 - s)(A - \omega + B))B \exp(s(A - \omega))uds.$$

Note that by (A.8)

$$(A.13) \quad \|\exp(A - \omega)\|_* \leq \exp(-\frac{1}{2}(\omega - \omega_A)) =: q < 1.$$

We show that for each $\varepsilon > 0$ there exists a compact operator K_ε such that $\|K - K_\varepsilon\|_* \leq \varepsilon$. Then the operator K defined in (A.12) is a uniform limit of compact operators and hence compact itself.

First, we rewrite (A.12) for $0 < t_0 \leq 1$

$$(A.14) \quad \begin{aligned} Ku &= K_0u + K_1u \\ &= \int_0^{t_0} \exp((1 - s)(A - \omega + B))B \exp(s(A - \omega))uds \\ &\quad + \int_{t_0}^1 \exp((1 - s)(A - \omega + B))B_0 \exp((s - t_0)(A - \omega))uds, \end{aligned}$$

where

$$(A.15) \quad B_0 = B \exp(t_0(A - \omega)).$$

Here we choose t_0 so small that for all $u \in X$:

$$(A.16) \quad \begin{aligned} \|K_0u\|_* &\leq C \int_0^{t_0} \exp((1 - s)\|B\|_*)\|B\|_* \\ &\quad \exp(-\frac{s}{2}(\omega - \omega_A))ds \|u\|_* \leq \frac{\varepsilon}{2} \|u\|_*. \end{aligned}$$

We approximate the integral in K_1 by step functions on the grid $t_j = t_0 + j\frac{1-t_0}{N}$, $j = 0, \dots, N$

$$\begin{aligned} K_1 u &= \sum_{j=0}^{N-1} \int_{t_j}^{t_{j+1}} \dots ds \\ &= \sum_{j=1}^{N-1} \int_0^{\frac{1-t_0}{N}} \exp((1 - (t_j + \tau))(A - \omega + B)) B_0 \exp((t_j + \tau - t_0)(A - \omega)) u d\tau \\ &= \sum_{j=0}^{N-1} \exp((1 - t_{j+1})(A - \omega + B)) B_0 \int_0^{\frac{1-t_0}{N}} \exp((\tau + j\frac{1-t_0}{N})(A - \omega)) u d\tau \\ &+ \sum_{j=0}^{N-1} \exp((1 - t_{j+1})(A - \omega + B)) \\ &\quad \int_0^{\frac{1-t_0}{N}} (\exp((\frac{1-t_0}{N} - \tau)(A - \omega + B)) - I) B_0 \exp((\tau + j\frac{1-t_0}{N})(A - \omega)) u d\tau \\ &= K_N u + R_N u. \end{aligned}$$

By our assumption the operator B_0 in (A.15) is compact, hence K_N is compact and can be taken as approximation of K . Compactness of K follows if we show that $\|R_N\|_* \rightarrow 0$ as $N \rightarrow \infty$.

For $\|u\|_* \leq 1$ and $j = 0, \dots, N - 1, 0 \leq \tau \leq \frac{1-t_0}{N}$ we have by (A.13)

$$(A.17) \quad \|\exp((\frac{j}{N}(1 - t_0) + \tau)(A - \omega))u\|_* \leq 1.$$

Now apply Lemma A.1 to the precompact set $M_0 = \{B_0 u : \|u\|_* \leq 1\}$ and obtain $\delta = \delta(\varepsilon) > 0$ so that for $0 \leq s \leq \delta$:

$$(A.18) \quad \sup_{v \in M_0} \|(\exp(s(A - \omega + B)) - I)v\|_* \leq \frac{\varepsilon \|B\|_*}{2(e^{\|B\|_*} - 1)}.$$

Using (A.8) we then have the following estimate for $N \geq \frac{1}{\delta}$

$$(A.19) \quad \|R_N\|_* \leq \frac{\varepsilon \|B\|_*}{2N(e^{\|B\|_*} - 1)} \sum_{j=0}^{N-1} e^{(1-t_{j+1})\|B\|_*} \leq \frac{\varepsilon}{2}.$$

This completes the proof of the compactness of K .

In the next step we apply Theorem A.2 with the settings $T = \exp(A - \omega)$, $S = K$, $\lambda_0 = 1$, and $\Omega = \{\lambda \in \mathbb{C} : |\lambda| > q\}$. By (A.13) the operator $(T - 1)^{-1}$ exists and is continuous, hence $K(T - 1)^{-1}$ is compact. Since $\exp(A - \omega + B)$ is bounded, the set Ω has points in the resolvent and thus

$$(A.20) \quad |\sigma_{ess}(\exp(A - \omega + B))| \leq q.$$

We have shown

$$|\sigma_{ess}(\exp(A + B))| \leq qe^\omega = \exp(\frac{1}{2}(\omega + \omega_A)) \quad \text{for all } \omega > \omega_A,$$

which proves our first assertion (A.4).

Now consider $\omega > \max(\omega_A, \omega_+)$. For the point spectra we conclude from [13, Theorem 2.4]

$$(A.21) \quad \sigma_{point}(\exp(A - \omega + B)) \subset \exp(\sigma_{point}(A - \omega + B)) \cup \{0\}.$$

(Note that in reference [13] the set σ_{point} contains, by definition, *all* eigenvalues, not necessarily isolated or of finite multiplicity.) By assumption (A.5) we have $\operatorname{Re} \sigma_{point}(A + B - \omega) \leq \omega_+ - \omega < 0$ which leads to $|\sigma_{point}(\exp(A - \omega + B))| \leq e^{\omega_+ - \omega}$. Combining this with (A.20) yields the estimate for the whole spectrum

$$(A.22) \quad |\sigma(\exp(A - \omega + B))| \leq \max(q, e^{\omega_+ - \omega}) < 1.$$

Therefore, we can construct a new equivalent norm $\|\cdot\|_+$ such that

$$(A.23) \quad \|\exp(A - \omega + B)\|_+ \leq 1.$$

This implies $\|\exp(n(A - \omega + B))\|_+ \leq 1$ for all $n \in \mathbb{N}$ and, by filling the finite gaps with the help of (A.9),

$$(A.24) \quad \|\exp(t(A - \omega + B))\|_+ \leq C = \max_{0 \leq s \leq 1} \|\exp(s(A - \omega + B))\|_+, \quad t \geq 0.$$

This shows that the semigroup has type at most ω . Since the choice of $\omega > \max(\omega_A, \omega_+)$ was arbitrary, the proof is complete. \square

References

- [1] H. W. Alt, *Lineare Funktionalanalysis* (3rd ed.). Springer, 1999.
- [2] P. W. Bates and C. K. R. T. Jones, *Invariant manifolds for semilinear partial differential equations*. In Dynamics Reported Vol. 2, (U. Kirchgraber, H.O. Walther Eds.), 1-38, Teubner, 1989.
- [3] W.-J. Beyn and V. Thümmler, *Freezing solutions of equivariant evolution equations*, SIAM Journal on Applied Dynamical Systems 3 (2004), 85-116.
- [4] P. Chossat and R. Lauterbach, *Methods in equivariant bifurcations and dynamical systems*. Advanced Series in Nonlinear Dynamics Vol. 15, World Scientific Publishing, 2000.
- [5] Comsol, *Comsol Multiphysics 3.3*, Comsol Inc., www.comsol.com, 2007.
- [6] L.-C. Crasovan, B. A. Malomed, and D. Mihalache, *Stable vortex solitons in the two-dimensional Ginzburg-Landau equation*, Phys. Rev. E, 63 (2001), 016605.
- [7] L.-C. Crasovan, B. A. Malomed, and D. Mihalache, *Spinning solitons in cubic-quintic nonlinear media*, Pramana J. Phys., 57 (2001), pp. 1041-1059.
- [8] K.-J. Engel and R. Nagel, *One-Parameter Semigroups for Linear Evolution Equations*. Graduate Texts in Mathematics, Springer, 2000.
- [9] A. Ghazaryan, Y. Latushkin, S. Schechter and A. J. De Souza, *Stability of gasless combustion fronts in one-dimensional solids*. Preprint, 2008.
- [10] I.C. Gohberg and M. G. Krĕin, *Introduction to the Theory of Linear Nonselfadjoint Operators*. Translations of Mathematical Monographs Vol. 18, American Mathematical Society, 1969.
- [11] D. Henry, *Geometric Theory of Semilinear Parabolic Equations*. Lecture Notes in Mathematics, Springer, 1981.
- [12] E. Hille and R. Phillips, *Functional Analysis and Semi-Groups*, AMS Colloquium Publications XXXI, 1957.
- [13] A. Pazy, *Semigroups of linear operators and applications to partial differential equations (2.corr.print)*. Applied Mathematical Sciences Vol. 44, Springer, 1983.
- [14] J. Rademacher, B. Sandstede and A. Scheel, *Computing absolute and essential spectra using continuation*, Physica D 229, No. 2, 166-183, 2007.,
- [15] M. Renardy and R.C. Rogers, *An Introduction to Partial Differential Equations*. Texts in Applied Mathematics Vol.13, Springer, 1993.
- [16] B. Sandstede, A. Scheel and C. Wulff, *Dynamics of spiral waves on unbounded domains using center-manifold reductions*. J. Differential Equations 141, 122-149, 1997.
- [17] B. Sandstede and A. Scheel, *Absolute versus convective instability of spiral waves*. Physical Review E, 62, No. 6, 7708-7714, 2000.

- [18] B. Sandstede, *Stability of travelling waves*. In Handbook of Dynamical Systems Vol. 2 (B. Fiedler Ed.), 983-1055, North-Holland, 2002.
- [19] A. E. Taylor and D. C. Lay *Introduction to Functional Analysis* (2nd ed). Wiley, 1980.
- [20] K. Yosida, *Functional Analysis*. Grundlehren der mathematischen Wissenschaften in Einzeldarstellungen 123 (4th ed.), Springer, 1974.

FAKULTÄT FÜR MATHEMATIK, POSTFACH 100131, UNIVERSITÄT BIELEFELD, 33501 BIELEFELD,
GERMANY

DEPARTMENT OF MATHEMATICS AND STATISTICS, UNM, ALBUQUERQUE, NM 87131, USA